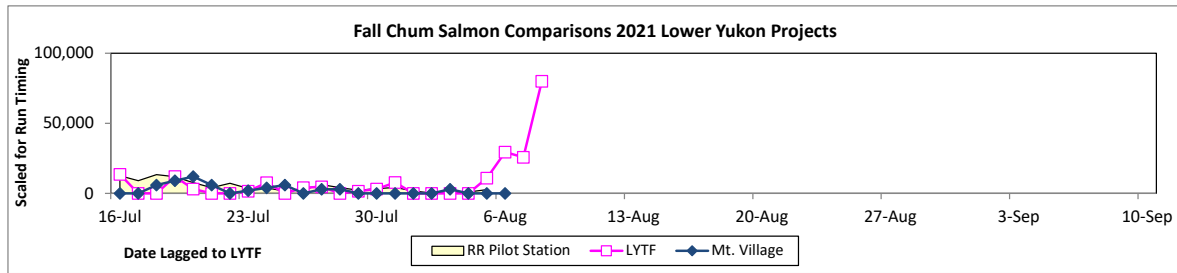
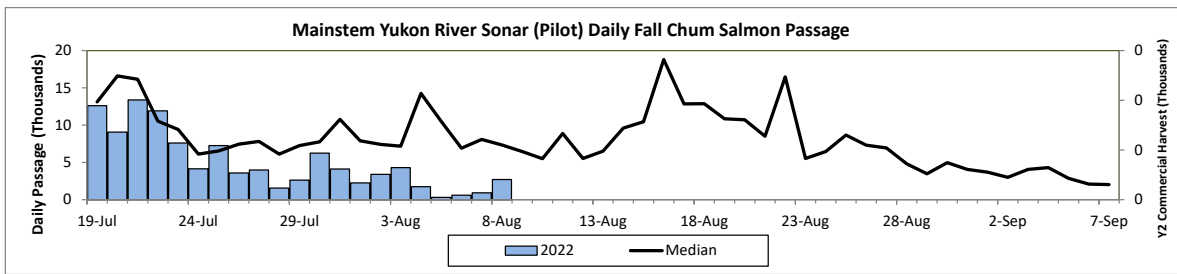
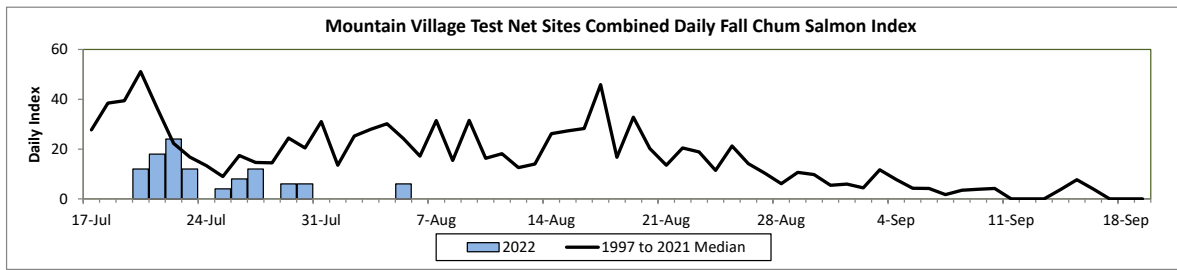
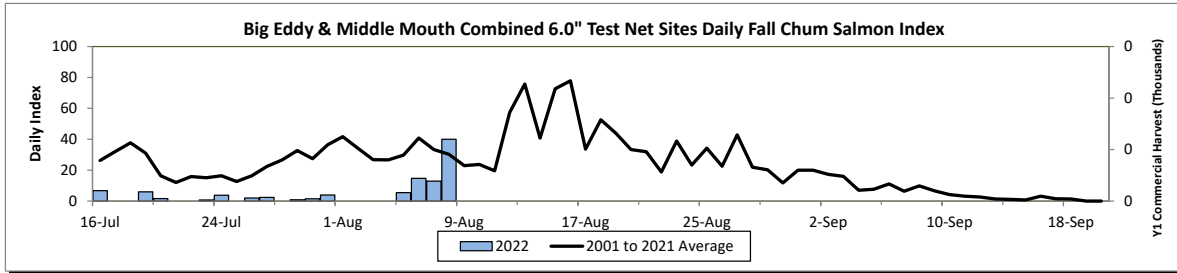


Yukon Area project charts of daily fall chum salmon test fishery CPUEs, escapements, and fish wheel catches, historical compared to 2022.

**All data are preliminary (subject to revision based on new analyses) until formally published in respective agency publications. **

Questions regarding *fall season* can be directed to Area Manager Christy Gleason (christine.gleason@alaska.gov), or Research Biologist Bonnie Borba (bonnie.borba@alaska.gov). URL: http://www.adfg.alaska.gov/index.cfm?adfg=commercialbyareayukon.salmon_escapement

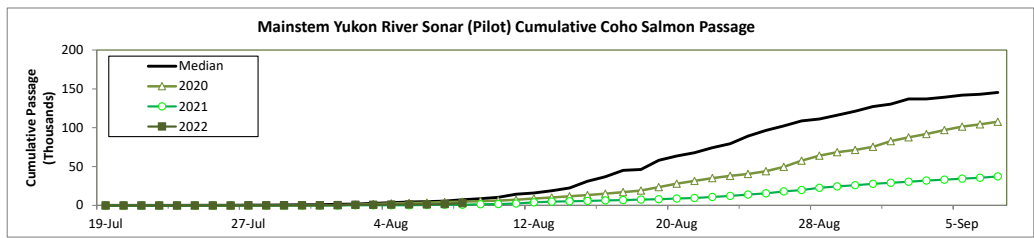
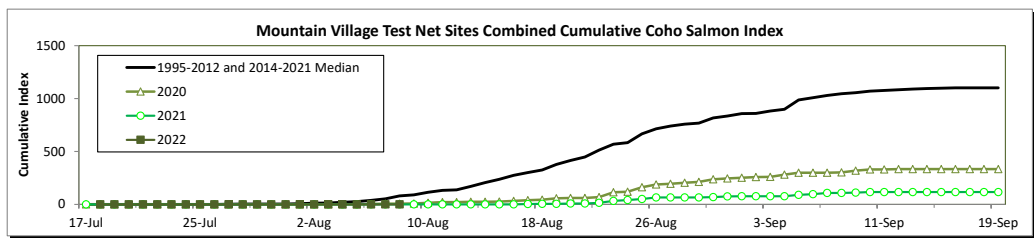
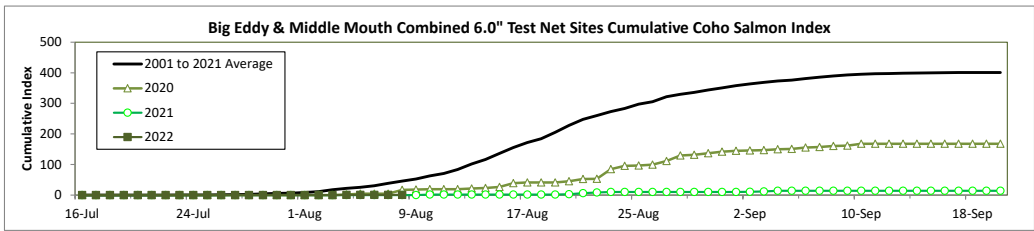
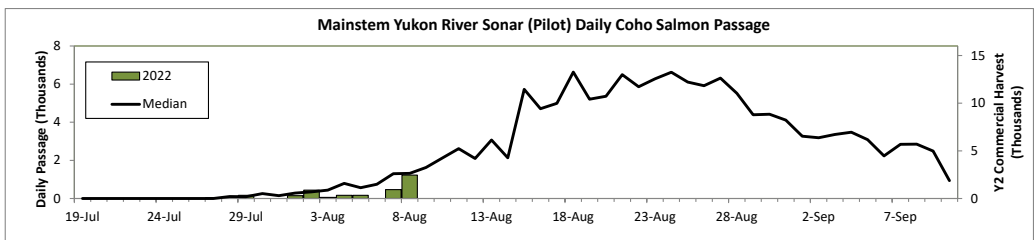
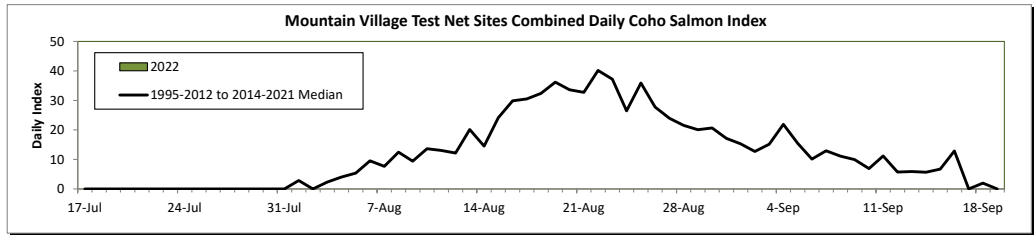
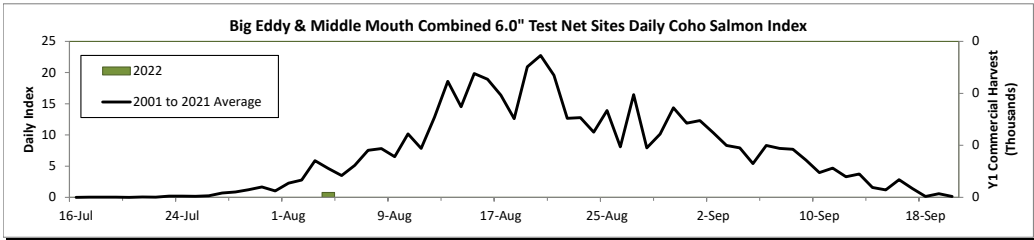
**For more detailed information on individual projects and qualifiers of the daily data please contact ADF&G at 907-459-7274.



Yukon Area project charts of daily and cumulative coho salmon assessments, historical compared to 2022.

**All data are preliminary (subject to revision based on new analyses) until formally published in respective agency publications. **
 Questions regarding *fall season* can be directed to Area Manager Christy Gleason (christine.gleason@alaska.gov), or Research Biologist Bonnie Borba (bonnie.borba@alaska.gov).

**For more detailed information on individual projects and qualifiers of the daily data please contact ADF&G at 907-459-7274.

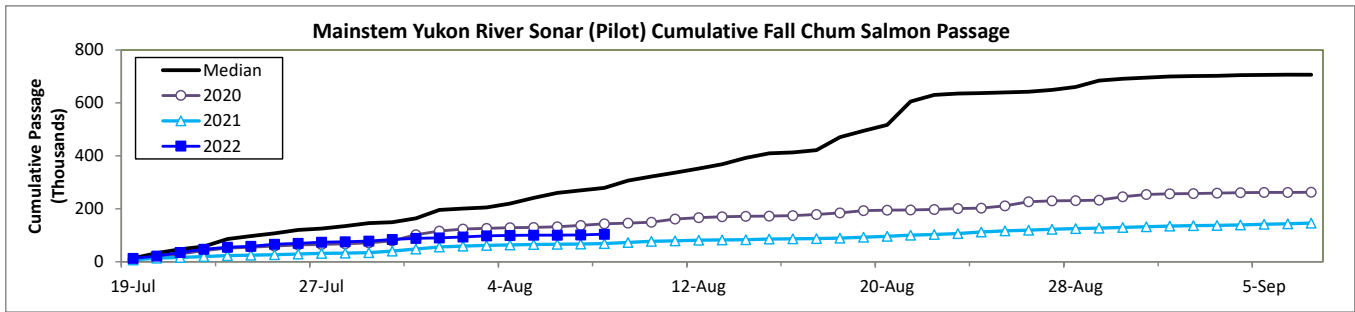
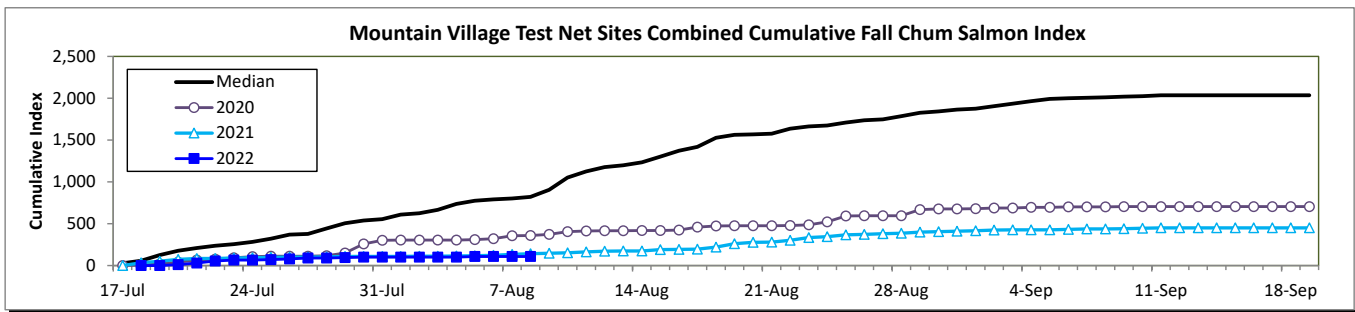
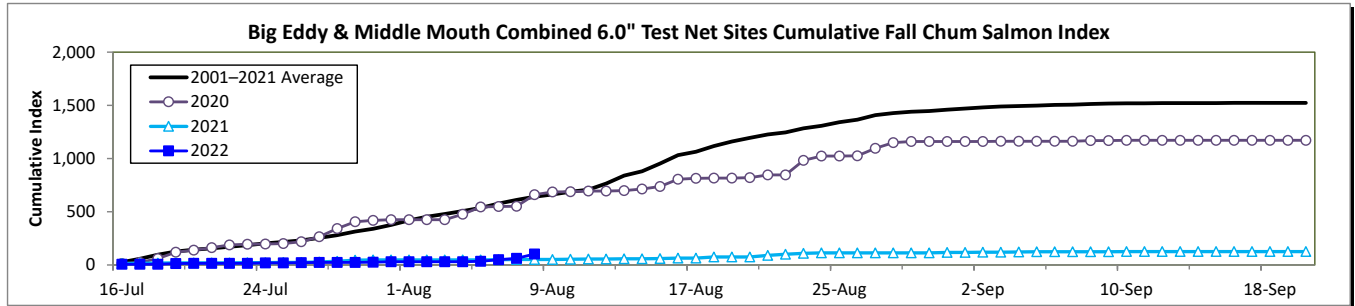


Yukon Area project charts of select cumulative fall chum or coho salmon test fishery CPUEs and escapement estimates, historical compared to 2022.

****All data are preliminary (subject to revision based on new analyses) until formally published in respective agency publications. ****

Questions regarding *fall season* can be directed to Area Manager Christy Gleason (christine.gleason@alaska.gov), or Research Biologist Bonnie Borba (bonnie.borba@alaska.gov). Or http://www.adfg.alaska.gov/index.cfm?adfg=commercialbyareayukon.salmon_escapement

****For more detailed information on individual projects and qualifiers of the daily data please contact ADF&G at 907-459-7274.**



Yukon Area project updates of daily and cumulative fall chum salmon test fishery CPUEs and escapement estimates, 2022.

****All data are preliminary (subject to revision) until formally published in respective agency publications. ****

****For more information on individual projects and qualifiers of the daily data please contact ADF&G at 907-459-7274.**

Date	Lower Yukon Drift Gillnet Test Fishery Assessment RM 20			Mt. Village Drift Gillnet Test Fishery Assessment RM 87			Mainstem Yukon Sonar Near Pilot Station Drainagewide Goal: 300,000-600,000 (SEG)		
	Daily CPUE	Cumulative CPUE	Average Cumulative	Daily CPUE	Cumulative CPUE	Median Cumulative	Daily Passage	Cumulative Passage	Median Cumulative
16-Jul	6.78	6.78	26.32						
17-Jul	0.00	6.78	58.34						
18-Jul	0.00	6.78	96.11	0.00	0.00	57.96			
19-Jul	6.02	12.81	127.14	0.00	0.00	126.27	12,620	12,620	13,121
20-Jul	1.57	14.38	143.51	12.00	12.00	176.57	9,076	21,696	32,476
21-Jul	0.00 ^a	14.38	155.48	18.00 ^a	30.00	208.40	13,387	35,083	47,286
22-Jul	0.00	14.38	171.31	24.00	54.00	237.57	11,931	47,014	57,861
23-Jul	0.77	15.14	186.36	12.00	66.00	255.60	7,592	54,606	85,737
24-Jul	3.85	18.99	202.73	0.00	66.00	282.37	4,141	58,747	97,375
25-Jul	0.00	18.99	215.34	4.00 ^a	70.00	321.11	7,261	66,008	106,941
26-Jul	2.06	21.05	231.76	8.00 ^a	78.00	370.49	3,571	69,579	120,277
27-Jul	2.35	23.40	254.23	12.00	90.00	377.48	3,973	73,552	125,261
28-Jul	0.00	23.40	280.85	0.00	90.00	443.42	1,550	75,102	134,902
29-Jul	0.78	24.17	313.57	6.00	96.00	506.40	2,612	77,714	146,334
30-Jul	1.55	25.72	340.94	6.00	102.00	537.14	6,241	83,955	149,614
31-Jul	3.91	29.63	377.36	0.00	102.00	554.23	4,103	88,058	164,231
1-Aug	0.00	29.63	419.05	0.00	102.00	608.18	2,264	90,322	195,612
2-Aug	0.00	29.63	453.10	0.00	102.00	624.18	3,389	93,711	200,675
3-Aug	0.00	29.63	479.88	0.00	102.00	667.03	4,309	98,020	205,555
4-Aug	0.00	29.63	506.57	0.00	102.00	736.97	1,742	99,762	219,755
5-Aug	5.46	35.09	536.37	6.00	108.00	774.82	299	100,061	241,211
6-Aug	14.71	49.80	577.11	0.00	108.00	790.55	594	100,655	260,524
7-Aug	12.86	62.65	610.43	0.00	108.00	801.76	919	101,574	270,007
8-Aug	40.00	102.65	640.64	0.00	108.00	821.33	2,708	104,282	279,271
9-Aug	-	-	663.54	-	-	906.36	-	-	306,724
10-Aug	-	-	687.27	-	-	1,051.44	-	-	321,660
11-Aug	-	-	706.90	-	-	1,126.18	-	-	336,478
12-Aug	-	-	764.24	-	-	1,177.34	-	-	351,687
13-Aug	-	-	839.96	-	-	1,199.77	-	-	368,361
14-Aug	-	-	880.76	-	-	1,233.59	-	-	392,646
15-Aug	-	-	953.35	-	-	1,300.64	-	-	409,832
16-Aug	-	-	1,031.21	-	-	1,371.74	-	-	413,053
17-Aug	-	-	1,064.81	-	-	1,419.04	-	-	421,571
18-Aug	-	-	1,117.40	-	-	1,526.79	-	-	470,680
19-Aug	-	-	1,161.21	-	-	1,562.50	-	-	494,537
20-Aug	-	-	1,194.52	-	-	1,568.00	-	-	517,157
21-Aug	-	-	1,226.42	-	-	1,575.50	-	-	605,769
22-Aug	-	-	1,245.24	-	-	1,635.43	-	-	630,062
23-Aug	-	-	1,284.14	-	-	1,663.97	-	-	635,590
24-Aug	-	-	1,307.49	-	-	1,673.11	-	-	637,043
25-Aug	-	-	1,341.76	-	-	1,710.46	-	-	639,470
26-Aug	-	-	1,364.33	-	-	1,735.21	-	-	642,528
27-Aug	-	-	1,407.13	-	-	1,747.77	-	-	649,517
28-Aug	-	-	1,427.96	-	-	1,786.09	-	-	660,593
29-Aug	-	-	1,440.47	-	-	1,825.24	-	-	684,642
30-Aug	-	-	1,447.18	-	-	1,843.38	-	-	691,063
31-Aug	-	-	1,458.58	-	-	1,865.15	-	-	695,908
1-Sep	-	-	1,469.98	-	-	1,875.82	-	-	699,599
2-Sep	-	-	1,479.85	-	-	1,903.64	-	-	701,516
3-Sep	-	-	1,489.01	-	-	1,934.26	-	-	702,932
4-Sep	-	-	1,492.98	-	-	1,963.79	-	-	704,862
5-Sep	-	-	1,497.35	-	-	1,990.73	-	-	705,997
6-Sep	-	-	1,503.73	-	-	1,999.93	-	-	706,423
7-Sep	-	-	1,507.34	-	-	2,004.58	-	-	706,630
8-Sep	-	-	1,512.99	-	-	2,011.42			
9-Sep	-	-	1,516.78	-	-	2,017.98			
10-Sep	-	-	1,519.19	-	-	2,024.55			
11-Sep				-	-	2,035.33			
12-Sep				-	-	2,035.33			
13-Sep									
14-Sep									

For a recording of the most recent Lower Yukon Test Fish Catch Information please call 1 (866) 479-7387 (toll free) outside of Fairbanks; in Fairbanks call (907) 459-7387.

Note: test fishery data may be sent out with the mornings CPUE which will alter when the evening drifts are included.

^a Data interpolated

Questions regarding fall season can be directed to Area Manager Christy Gleason (christine.gleason@alaska.gov), or Research Biologist Bonnie Borba (bonnie.borba@alaska.gov).

Yukon Area project updates of daily and cumulative coho salmon test fishery and sonar assessments, 2022.

**All data are preliminary (subject to revision based on new analyses) until formally published in respective agency publications. **

**For more detailed information on individual projects and qualifiers of the daily data please contact ADF&G at 907-459-7274.

Date	Lower Yukon Drift Gillnet Test Fishery Assessment RM 20			Mt. Village Drift Gillnet Test Fishery Assessment RM 87			Mainstem Yukon Sonar Near Pilot Station			Date
	Daily CPUE	Cumulative CPUE	Average Cumulative	Daily CPUE	Cumulative CPUE	Median Cumulative	Daily Passage	Cumulative Passage	Median Cumulative	
16-Jul	0.00	0.00	0.00							16-Jul
17-Jul	0.00	0.00	0.03							17-Jul
18-Jul	0.00	0.00	0.07	0.00	0.00	0.00				18-Jul
19-Jul	0.00	0.00	0.11	0.00	0.00	0.00	0	0	0	19-Jul
20-Jul	0.00	0.00	0.11	0.00	0.00	0.00	0	0	0	20-Jul
21-Jul	0.00 ^a	0.00	0.18	0.00 ^a	0.00	0.00	0	0	0	21-Jul
22-Jul	0.00	0.00	0.21	0.00	0.00	0.00	0	0	0	22-Jul
23-Jul	0.00	0.00	0.40	0.00	0.00	0.00	0	0	0	23-Jul
24-Jul	0.00	0.00	0.60	0.00	0.00	0.00	0	0	32	24-Jul
25-Jul	0.00	0.00	0.77	0.00 ^a	0.00	0.00	0	0	95	25-Jul
26-Jul	0.00	0.00	1.03	0.00 ^a	0.00	0.00	0	0	120	26-Jul
27-Jul	0.00	0.00	1.72	0.00	0.00	1.48	51	51	235	27-Jul
28-Jul	0.00	0.00	2.57	0.00	0.00	3.06	0	51	263	28-Jul
29-Jul	0.00	0.00	3.81	0.00	0.00	3.31	166	217	480	29-Jul
30-Jul	0.00	0.00	5.47	0.00	0.00	3.33	0	217	715	30-Jul
31-Jul	0.00	0.00	6.51	0.00	0.00	4.07	0	217	878	31-Jul
1-Aug	0.00	0.00	8.78	0.00	0.00	7.23	145	362	1,393	1-Aug
2-Aug	0.00	0.00	11.56	0.00	0.00	12.42	439	801	1,591	2-Aug
3-Aug	0.00	0.00	17.45	0.00	0.00	13.75	55	856	2,497	3-Aug
4-Aug	0.80	0.80	22.09	0.00	0.00	20.08	165	1,021	3,475	4-Aug
5-Aug	0.00	0.80	25.59	0.00	0.00	27.02	169	1,190	4,241	5-Aug
6-Aug	0.00	0.80	30.73	0.00	0.00	38.65	0	1,190	4,859	6-Aug
7-Aug	0.00	0.80	38.27	0.00	0.00	53.15	462	1,652	5,466	7-Aug
8-Aug	0.00	0.80	46.10	0.00	0.00	79.95	1,225	2,877	7,125	8-Aug
9-Aug	-	-	52.61	-	-	90.61	-	-	8,680	9-Aug
10-Aug	-	-	62.78	-	-	114.31	-	-	10,300	10-Aug
11-Aug	-	-	70.63	-	-	132.04	-	-	14,446	11-Aug
12-Aug	-	-	83.46	-	-	138.19	-	-	15,947	12-Aug
13-Aug	-	-	102.08	-	-	169.73	-	-	18,825	13-Aug
14-Aug	-	-	116.61	-	-	205.79	-	-	22,284	14-Aug
15-Aug	-	-	136.46	-	-	237.87	-	-	31,055	15-Aug
16-Aug	-	-	155.39	-	-	274.38	-	-	36,911	16-Aug
17-Aug	-	-	171.77	-	-	301.50	-	-	45,109	17-Aug
18-Aug	-	-	184.38	-	-	325.78	-	-	46,184	18-Aug
19-Aug	-	-	205.30	-	-	377.54	-	-	57,907	19-Aug
20-Aug	-	-	228.05	-	-	415.97	-	-	63,500	20-Aug
21-Aug	-	-	247.61	-	-	447.83	-	-	67,677	21-Aug
22-Aug	-	-	260.28	-	-	512.57	-	-	74,166	22-Aug
23-Aug	-	-	273.07	-	-	569.09	-	-	79,253	23-Aug
24-Aug	-	-	283.53	-	-	583.44	-	-	89,263	24-Aug
25-Aug	-	-	297.44	-	-	667.18	-	-	96,485	25-Aug
26-Aug	-	-	305.54	-	-	713.79	-	-	102,324	26-Aug
27-Aug	-	-	321.99	-	-	740.02	-	-	108,641	27-Aug
28-Aug	-	-	329.56	-	-	758.75	-	-	111,289	28-Aug
29-Aug	-	-	335.83	-	-	768.26	-	-	116,017	29-Aug
30-Aug	-	-	344.03	-	-	816.53	-	-	121,293	30-Aug
31-Aug	-	-	350.83	-	-	835.49	-	-	127,139	31-Aug
1-Sep	-	-	357.87	-	-	858.24	-	-	130,378	1-Sep
2-Sep	-	-	363.79	-	-	860.38	-	-	137,077	2-Sep
3-Sep	-	-	368.55	-	-	881.93	-	-	137,077	3-Sep
4-Sep	-	-	373.08	-	-	898.77	-	-	139,187	4-Sep
5-Sep	-	-	376.17	-	-	986.63	-	-	141,925	5-Sep
6-Sep	-	-	380.93	-	-	1,008.89	-	-	142,981	6-Sep
7-Sep	-	-	385.41	-	-	1,029.50	-	-	145,378	7-Sep
8-Sep	-	-	389.82	-	-	1,045.79				8-Sep
9-Sep	-	-	393.22	-	-	1,055.38				9-Sep
10-Sep	-	-	395.49	-	-	1,070.37				10-Sep
11-Sep				-	-	1,076.97				11-Sep
12-Sep				-	-	1,084.03				12-Sep
13-Sep										13-Sep
14-Sep										14-Sep

**All data are preliminary (subject to revision based on new analyses) until formally published in respective agency publications. **

For a recording of the most recent Lower Yukon Test Fish Catch Information please call 1 (866) 479-7387 (toll free) outside of Fairbanks; in Fairbanks call (907) 459-7387.

Note: Test fishery data may be sent out with the mornings CPUE which will alter when the evening drifts are included.
a Data interpolated

Questions regarding fall season can be directed to acting Manager Christy Gleason (christine.gleason@alaska.gov), or Research Bonnie Borba (bonnie.borba@alaska.gov).

Approximate Location of Chum Salmon Pulses by Date of the Pulse Past Emmonak Continuing Up the Yukon River, 2022.

Community/Area District/Subdistrict	RIVER MILES	DAYS BETWEEN SITES	Group 1 LYTF	Mini Grp 2 LYTF	PULSE 1 LYTF	PULSE 2 LYTF	PULSE 3 LYTF	PULSE 4 LYTF
Number of Days Lull to Lull			10	8				
Sonar Estimate of Passage Lull to Lull			75,102	24,959				
Travel in miles per day			35	35	35			
Emmonak-1	24	0.0	16-Jul	30-Jul	6-Aug			
Mt. Village-2	87	1.8	17-Jul	31-Jul	7-Aug	-	-	-
Pilot Station-2	123	2.8	18-Jul	1-Aug	8-Aug	-	-	-
Marshall-2	161	3.9	19-Jul	2-Aug	9-Aug	-	-	-
Russian Mission-3	213	5.4	21-Jul	4-Aug	11-Aug	-	-	-
Holy Cross-3	279	7.3	23-Jul	6-Aug	13-Aug	-	-	-
Anvik-4A	318	8.4	24-Jul	7-Aug	14-Aug	-	-	-
Grayling-4A	336	8.9	24-Jul	7-Aug	14-Aug	-	-	-
Kaltag-4A	450	12.2	28-Jul	11-Aug	18-Aug	-	-	-
Nulato-4A	484	13.1	29-Jul	12-Aug	19-Aug	-	-	-
Koyukuk-4A	502	13.7	29-Jul	12-Aug	19-Aug	-	-	-
Galena-4BC	530	14.5	30-Jul	13-Aug	20-Aug	-	-	-
Ruby-4BC	581	15.9	31-Jul	14-Aug	21-Aug	-	-	-
Tanana-5AB	695	19.2	4-Aug	18-Aug	25-Aug	-	-	-
Rapids-5B	731	20.2	5-Aug	19-Aug	26-Aug	-	-	-
Rampart-5C	763	21.1	6-Aug	20-Aug	27-Aug	-	-	-
Pipeline Bridge-5C	820	22.7	7-Aug	21-Aug	28-Aug	-	-	-
Stevens Village-5D	847	23.5	8-Aug	22-Aug	29-Aug	-	-	-
Beaver-5D	932	29.3	11-Aug	25-Aug	1-Sep	-	-	-
Fort Yukon-5D	1002	31.5	14-Aug	28-Aug	4-Sep	-	-	-
Circle-5D	1061	33.5	16-Aug	30-Aug	6-Sep	-	-	-
Eagle-5D	1213	38.4	23-Aug	6-Sep	13-Sep	-	-	-
Canadian Yukon Border	1224	38.7	24-Aug	7-Sep	14-Sep	-	-	-
Porcupine Border	1250	39.5	25-Aug	8-Sep	15-Sep	-	-	-
Fishing Branch Escap	1600	50.8	4-Sep	18-Sep	25-Sep	-	-	-

*Note the numerous pulses in the lower river meld together as the fish migrate upstream therefore peak passage dates

**Salmon migration slows as they approach the final tributary so note that these dates are based on steady rate of travel

Approximate Location of Chum Salmon Pulses by Date of the Pulse Past Emmonak Continuing Up the Tanana River, 2022. Tanana Stock timing is August 16.

Manley-6A	765	21.2	6-Aug	20-Aug	27-Aug	-	-	-
Kantishna-6A	793	22.0	7-Aug	21-Aug	28-Aug	-	-	-
Nenana/Toklat-6B/A	860	23.9	11-Aug	25-Aug	1-Sep	-	-	-
Salcha River-6C	965	26.9	22-Aug	5-Sep	12-Sep	-	-	-
Delta River-6D	1031	28.8	30-Aug	13-Sep	20-Sep	-	-	-
Bluff Cabin Slough-6D	1049	29.3	1-Sep	15-Sep	22-Sep	-	-	-

Approximate Location of Chum Salmon Pulses by Date of the Pulse Past Emmonak Continuing Up the Koyukuk River, 2022.

Huslia-4A	711	19.6	4-Aug	18-Aug	25-Aug	-	-	-
Hughes-4A	881	24.5	9-Aug	23-Aug	30-Aug	-	-	-
Alatna/Allakaket-4A	956	26.6	11-Aug	25-Aug	1-Sep	-	-	-
Bettles-4A	1121	31.3	16-Aug	30-Aug	6-Sep	-	-	-
Wiseman-4A	1186	33.2	18-Aug	1-Sep	8-Sep	-	-	-

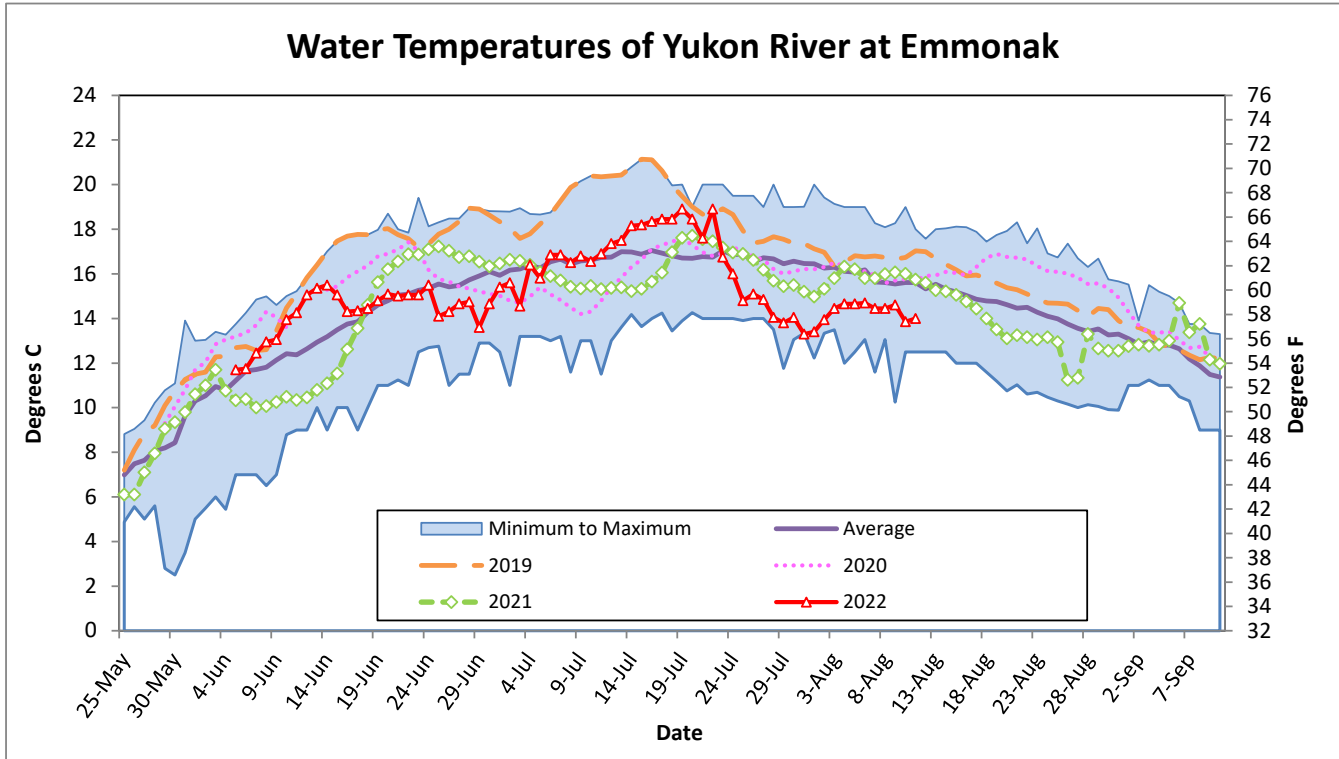


Figure 6.3. Average daily water temperatures collected (from both manual 1984–present and loggers 2004–2021) in the Yukon River near Emmonak, comparing 2022 and select years to historical minimum, maximum, and average.

* Please note that current year measurements are taken with a handheld thermometer and are preliminary.

** Some days may only have a single measurement resulting in a reported value skewed from the expected daily average.

2022 Daily and Cumulative CHINOOK salmon test fishery CPUE, and escapements

Preliminary project information, subject to change

	Big Eddy Lower Yukon Test Fishery (Set) - ADF&G & YDFDA				Lower Yukon Test Fishery (Drift)- ADF&G & YDFDA				Pilot Station Sonar - ADF&G			Date
	Daily Counts	Daily CPUE	Cumulative CPUE ^a	Average Cumulative CPUE ^a	Daily Counts	Daily CPUE	Cumulative CPUE	Average Cumulative CPUE ^b	Daily Counts	Cumulative Counts	Average Cumulative Counts ^g	
24-May												24-May
25-May												25-May
26-May												26-May
27-May												27-May
28-May												28-May
29-May												29-May
30-May												30-May
31-May												31-May
1-Jun									0	0	166	1-Jun
2-Jun					0	^d 0.00	0.00	12.03	0	0	257	2-Jun
3-Jun					0	^{de} 0.00	0.00	14.31	15	15	535	3-Jun
4-Jun					0	^c 0.00	0.00	16.41	0	15	782	4-Jun
5-Jun	3	0.75	0.75	1.19	0	^{de} 0.00	0.00	18.68	5	20	1,101	5-Jun
6-Jun	4	0.17	0.92	1.53	0	^f 0.00	0.00	21.43	87	107	1,974	6-Jun
7-Jun	5	0.21	1.13	1.85	0	^c 0.00	0.00	29.84	204	311	2,330	7-Jun
8-Jun	4	0.17	1.29	2.14	0	^c 0.00	0.00	35.45	221	532	3,130	8-Jun
9-Jun	5	0.21	1.50	2.70	0	0.00	0.00	41.77	275	807	3,972	9-Jun
10-Jun	2	0.08	1.58	3.21	0	0.00	0.00	45.70	447	1,254	5,588	10-Jun
11-Jun	4	0.17	1.75	3.77	1	1.15	1.15	59.21	378	1,632	6,882	11-Jun
12-Jun	4	0.17	1.92	4.49	0	0.00	1.15	70.60	274	1,906	8,038	12-Jun
13-Jun	11	0.46	2.38	5.27	2	^{de} 2.37	3.52	83.04	258	2,164	8,302	13-Jun
14-Jun	3	0.13	2.50	6.04	0	^c 0.00	3.52	96.07	702	2,866	9,572	14-Jun
15-Jun	4	0.17	2.67	6.80	0	0.00	3.52	108.46	868	3,734	11,065	15-Jun
16-Jun	0	0.00	2.67	7.72	3	2.86	6.38	118.16	631	4,365	12,764	16-Jun
17-Jun	0	0.00	2.67	8.70	1	^c 1.07	7.44	138.48	725	5,090	15,303	17-Jun
18-Jun	1	0.04	2.71	9.77	0	^c 0.00	7.44	159.33	1,195	6,285	20,147	18-Jun
19-Jun	0	0.00	2.71	10.74	0	^c 0.00	7.44	176.82	630	6,915	24,677	19-Jun
20-Jun	4	0.17	2.88	11.64	0	^c 0.00	7.44	189.58	583	7,498	30,316	20-Jun
21-Jun	6	0.25	3.13	12.66	1	^c 1.06	8.50	203.67	785	8,283	36,759	21-Jun
22-Jun	21	0.88	4.00	13.70	6	^b 6.37	14.87	216.85	751	9,034	42,536	22-Jun
23-Jun	8	0.33	4.33	14.80	12	11.47	26.35	240.56	1,113	10,147	48,861	23-Jun
24-Jun	4	0.17	4.50	15.85	4	3.81	30.16	254.51	1,753	11,900	54,217	24-Jun
25-Jun	4	0.17	4.67	16.79	1	0.97	31.12	278.40	2,865	14,765	61,113	25-Jun
26-Jun	1	^b 0.08	4.75	17.80	0	^{de} 0.00	31.12	296.09	4,351	19,116	70,760	26-Jun
27-Jun	17	0.71	5.46	18.74	6	6.40	37.52	311.48	1,597	20,713	77,718	27-Jun
28-Jun	1	0.04	5.50	19.60	3	^c 2.82	40.35	319.05	3,451	24,164	86,141	28-Jun
29-Jun	0	0.00	5.50	20.34	0	0.00	40.35	328.38	2,055	26,219	94,453	29-Jun
30-Jun	1	0.04	5.54	20.99	1	0.96	41.30	336.01	2,442	28,661	104,731	30-Jun
1-Jul	1	0.04	5.59	21.62	0	0.00	41.30	343.72	1,777	30,438	111,125	1-Jul
2-Jul	3	0.13	5.71	22.27	0	0.00	41.30	349.91	1,727	32,165	118,069	2-Jul
3-Jul	1	0.04	5.75	22.75	3	2.89	44.20	355.81	1,286	33,451	123,764	3-Jul
4-Jul	2	0.08	5.84	23.11	1	0.96	45.16	359.11	1,644	35,095	128,415	4-Jul
5-Jul	3	0.13	5.96	23.41	0	0.00	45.16	360.35	669	35,764	132,339	5-Jul
6-Jul	4	0.17	6.13	23.69	0	0.00	45.16	361.92	1,490	37,254	135,569	6-Jul
7-Jul	0	0.00	6.13	23.94	0	0.00	45.16	362.53	927	38,181	137,703	7-Jul
8-Jul	0	0.00	6.13	24.16	1	0.97	46.13	364.80	409	38,590	139,847	8-Jul
9-Jul	1	0.04	6.17	24.33	1	0.96	47.09	365.49	611	39,201	142,004	9-Jul
10-Jul	2	0.08	6.25	24.46	0	0.00	47.09	366.01	963	40,164	143,856	10-Jul
11-Jul	0	0.00	6.25	24.57	0	0.00	47.09	366.85	542	40,706	144,770	11-Jul
12-Jul	1	ⁱ 0.04	6.29	24.67	0	0.00	47.09	367.46	465	41,171	145,820	12-Jul
13-Jul					0	^d 0.00	47.09	367.56	97	41,268	146,526	13-Jul
14-Jul					0	^d 0.00	47.09	367.56	672	41,940	147,619	14-Jul
15-Jul					0	ⁱ 0.00	47.09	367.76	800	42,740	148,559	15-Jul
16-Jul									0	42,740	148,961	16-Jul
17-Jul									151	42,891	149,457	17-Jul
18-Jul									370	43,261	149,732	18-Jul
19-Jul									369	43,630	150,039	19-Jul
20-Jul									128	43,758	150,340	20-Jul
21-Jul									200	43,958	150,708	21-Jul
22-Jul									266	44,224	151,086	22-Jul
23-Jul									154	44,378	151,349	23-Jul
24-Jul									47	44,425	151,435	24-Jul
25-Jul									0	44,425	151,538	25-Jul
26-Jul									0	44,425	151,674	26-Jul
27-Jul									156	44,581	151,836	27-Jul
28-Jul									0	44,581	151,894	28-Jul
29-Jul									0	44,581	151,950	29-Jul
30-Jul									0	44,581	152,016	30-Jul
31-Jul									0	44,581	152,072	31-Jul

Acronyms

- a Historical set CPUE is not comparable to 2020
- b Does not include 2001, 2004, 2007-2009, or 2020.
- c Does not include 1998-1999, 2001, or 2009.
- d AM drift(s) were cancelled
- e PM drift(s) were cancelled
- f All drift(s) were cancelled
- g Historical average cumulative counts based on late run timing
- h PM set was cancelled
- i Last day of operation
- ADF&G - Alaska Department of Fish and Game
- DFO - Department of Fisheries and Oceans Canada
- MEI - Metla Environmental Incorporated
- TCC - Tanana Chiefs Conference
- USFWS - United States Fish and Wildlife Service
- VGG - Vuntut Gwitch'in Government
- YDFDA - Yukon Delta Fisheries Development Association
- YE - Yukon Energy
- BSFA - Bering Sea Fisherman's Association
- KDFN - Kwanlin Dün First Nation

**2022 Daily and Cumulative CHINOOK salmon test fishery CPUE, and escapements
Preliminary project information, subject to change**

Chena River Tower - ADF&G			Salcha River Tower - ADF&G			Gisasa Weir - USFWS				
Escapement Goal 2,800 to 5,700 (BEG)			Escapement Goal 3,300 to 6,500 (BEG)							
Date	Daily Counts	Cumulative Counts	Average Cumulative Counts	Daily Counts	Cumulative Counts	Average Cumulative Counts	Daily Counts	Cumulative Counts	Average Cumulative Counts	Date
20-Jun										20-Jun
21-Jun										21-Jun
22-Jun	-	-	0							22-Jun
23-Jun	-	-	0							23-Jun
24-Jun	-	-	0	-	-	0				24-Jun
25-Jun	-	-	6	-	-	3				25-Jun
26-Jun	-	-	5	-	-	11				26-Jun
27-Jun	-	-	15	-	-	14				27-Jun
28-Jun	-	-	27	-	-	21				28-Jun
29-Jun	-	-	38	-	-	29	-	-	28	29-Jun
30-Jun	-	-	45	-	-	35	1	1	37	30-Jun
1-Jul	-	-	66	-	-	58	0	1	55	1-Jul
2-Jul	0	0	86	0	0	110	0	1	75	2-Jul
3-Jul	0	0	126	0	0	153	0	1	99	3-Jul
4-Jul	0	0	154	3	3	175	2	3	126	4-Jul
5-Jul	0	0	217	0	3	191	2	5	158	5-Jul
6-Jul	3	3	334	0	3	225	3	8	215	6-Jul
7-Jul	19	22	463	0	3	294	12	20	289	7-Jul
8-Jul	24	46	549	0	3	401	12	32	358	8-Jul
9-Jul	6	52	654	9	12	545	8	40	457	9-Jul
10-Jul	3	55	767	0	12	725	15	55	566	10-Jul
11-Jul	6	61	938	0	^d 12	989	42	97	677	11-Jul
12-Jul	21	82	1,223	0	^d 12	1,304	23	120	783	12-Jul
13-Jul	15	97	1,559	0	^d 12	1,729	19	139	937	13-Jul
14-Jul	9	106	1,937	0	^d 12	2,170	29	168	1,047	14-Jul
15-Jul	15	121	2,295	0	^d 12	2,588	16	184	1,154	15-Jul
16-Jul	3	124	2,665	0	^d 12	2,984	23	207	1,257	16-Jul
17-Jul	15	139	2,984	0	^d 12	3,192	30	237	1,346	17-Jul
18-Jul	6	145	3,324	0	^d 12	3,704	51	288	1,462	18-Jul
19-Jul	9	154	3,618	0	^d 12	4,201	6	294	1,528	19-Jul
20-Jul	9	163	3,964	0	12	4,589	10	304	1,631	20-Jul
21-Jul	27	190	4,218	27	39	5,003	71	375	1,706	21-Jul
22-Jul	54	244	4,478	39	78	5,477	35	410	1,775	22-Jul
23-Jul	21	265	4,723	54	132	5,893	11	421	1,815	23-Jul
24-Jul	6	271	4,948	79	211	6,263	7	428	1,864	24-Jul
25-Jul	9	280	5,154	21	232	6,618	21	449	1,913	25-Jul
26-Jul	32	312	5,390	33	265	6,937	30	479	1,962	26-Jul
27-Jul	11	323	5,526	45	310	7,193	8	487	1,992	27-Jul
28-Jul	6	329	5,630	41	351	7,416	8	495	2,017	28-Jul
29-Jul	0	329	5,703	81	432	7,567	8	503	^a 2,038	29-Jul
30-Jul	12	341	5,751	72	504	7,689				30-Jul
31-Jul	3	344	5,793	126	630	7,791				31-Jul
1-Aug	5	349	5,830	41	671	7,873				1-Aug
2-Aug	-3	346	5,849	51	722	7,949				2-Aug
3-Aug	3	349	5,864	48	770	8,000				3-Aug
4-Aug	6	355	5,877	57	827	8,038				4-Aug
5-Aug	0	^c 355	5,890	21	848	8,070				5-Aug
6-Aug				19	867	8,088				6-Aug
7-Aug				57	924	8,101				7-Aug
8-Aug				26	950	8,117				8-Aug
9-Aug				-	-	8,128				9-Aug
10-Aug				-	-	8,138				10-Aug
11-Aug				-	-	8,144				11-Aug
12-Aug				-	-	8,151				12-Aug
13-Aug				-	-	8,154				13-Aug
14-Aug				-	-	8,157				14-Aug
15-Aug				-	-	8,161				15-Aug
16-Aug				-	-	8,161				16-Aug
17-Aug										17-Aug
18-Aug										18-Aug

^a Historical set CPUE is not comparable to 2020
^b Does not include 2001, 2004, 2007-2009, or 2020.
^c Does not include 1998-1999, 2001, or 2009.
^d Visual counts and sonar are nonoperational due to high water
^e Last day of operation

ADF&G - Alaska Department of Fish and Game
DFO - Department of Fisheries and Oceans Canada
MEI - Metla Environmental Incorporated
TCC - Tanana Chiefs Conference
USFWS - United States Fish and Wildlife Service
VGG - Vuntut Gwitch'in Government
YDFDA - Yukon Delta Fisheries Development Association
YE - Yukon Energy
BSFA - Bering Sea Fisherman's Association
KDFN - Kwanlin Dün First Nation

2022 Daily and Cumulative CHINOOK salmon test fishery CPUE, and escapements
Preliminary project information, subject to change

Eagle Sonar - ADF&G		Upper Porcupine Sonar - DFO/VGG			Klondike Sonar - TH			Whitehorse Dam - YE			Takhini River Sonar - KDFN				
Border Escapement Goal 42,500 to 55,000 (IMEG) + Canadian TAC		Daily Counts	Cumulative Counts	Average Cumulative Counts	Daily Counts	Cumulative Counts	Average Cumulative Counts	Daily Counts	Cumulative Counts	Average Cumulative Counts	Daily Counts	Cumulative Counts	Date		
20-Jun													20-Jun		
21-Jun													21-Jun		
22-Jun													22-Jun		
23-Jun				-	-	40							23-Jun		
24-Jun				-	-	55							24-Jun		
25-Jun				-	-	111							25-Jun		
26-Jun				-	-	174							26-Jun		
27-Jun	-	-	95	-	-	144							27-Jun		
28-Jun	-	-	165	-	-	185							28-Jun		
29-Jun	0	0	343	-	-	132							29-Jun		
30-Jun	0	0	453	0	0	149							30-Jun		
1-Jul	11	11	382	0	0	149	-	-	0				1-Jul		
2-Jul	11	22	606	2	2	175	-	-	0				2-Jul		
3-Jul	17	39	690	0	2	180	-	-	0				3-Jul		
4-Jul	12	51	789	3	5	218	0	0	0				4-Jul		
5-Jul	23	74	990	0	5	249	0	0	10				5-Jul		
6-Jul	55	129	1,141	16	21	286	2	2	9				6-Jul		
7-Jul	42	171	1,437	4	25	321	2	4	14				7-Jul		
8-Jul	58	229	1,805	6	31	361	4	8	21				8-Jul		
9-Jul	87	316	2,353	14	45	412	9	17	32				9-Jul		
10-Jul	120	436	2,988	6	51	454	4	21	53				10-Jul		
11-Jul	150	586	3,762	18	69	502	2	23	82				11-Jul		
12-Jul	150	736	4,509	32	101	549	10	33	122				12-Jul		
13-Jul	177	913	5,691	34	135	610	7	40	165				13-Jul		
14-Jul	167	1,080	7,075	40	175	696	3	43	213				14-Jul		
15-Jul	196	1,276	8,673	32	207	778	8	51	277				15-Jul		
16-Jul	200	1,476	10,548	28	235	884	10	61	337				16-Jul		
17-Jul	218	1,694	12,557	8	243	978	5	66	403				17-Jul		
18-Jul	224	1,918	14,752	8	251	1,066	4	70	509				18-Jul		
19-Jul	194	2,112	17,012	14	265	1,186	6	76	632				19-Jul		
20-Jul	194	2,306	19,298	18	283	1,331	2	78	750				20-Jul		
21-Jul	175	2,481	21,623	2	285	1,470	3	81	864				21-Jul		
22-Jul	223	2,704	24,177	6	291	1,614	6	87	973				22-Jul		
23-Jul	243	2,947	26,714	4	295	1,766	12	99	1,071				23-Jul		
24-Jul	293	3,240	28,997	4	299	1,909	15	114	1,171				24-Jul		
25-Jul	455	3,695	31,231	10	309	2,013	7	121	1,236				25-Jul		
26-Jul	510	4,205	33,339	8	317	2,123	14	135	1,299				26-Jul		
27-Jul	561	4,766	35,293	12	329	2,221	2	137	1,354				27-Jul		
28-Jul	726	5,492	37,253	4	333	2,307	9	146	1,407				28-Jul		
29-Jul	778	6,270	39,242	0	333	2,393	9	155	1,441				29-Jul		
30-Jul	834	7,104	41,198	2	335	2,471	11	166	1,477				30-Jul		
31-Jul	776	7,880	42,972	0	335	2,555	9	175	1,501				31-Jul		
1-Aug	628	8,508	44,531	6	341	2,627	9	184	1,520				1-Aug		
2-Aug	576	9,084	45,926	4	345	2,687	13	197	1,535	1	1	42	3	3	2-Aug
3-Aug	520	9,604	47,170	2	347	2,737	6	203	1,551	0	1	57	0	3	3-Aug
4-Aug	460	10,064	48,264	2	349	2,790	7	210	1,566	1	2	74	1	4	4-Aug
5-Aug	407	10,471	49,233	0	349	2,847	3	213	1,580	0	2	94	1	5	5-Aug
6-Aug	245	10,716	50,055	0	349	2,908	2	215	1,593	4	6	118	3	8	6-Aug
7-Aug	202	10,918	50,763	0	349	2,971	-	-	1,601	0	6	147	3	11	7-Aug
8-Aug	152	11,070	51,346	-	-	3,033	-	-	1,612	3	9	185	-	-	8-Aug
9-Aug	-	-	51,833	-	-	3,085	-	-	1,622	-	-	230	-	-	9-Aug
10-Aug	-	-	52,237	-	-	3,139	-	-	1,629	-	-	275	-	-	10-Aug
11-Aug	-	-	52,575	-	-	3,200	-	-	1,636	-	-	325	-	-	11-Aug
12-Aug	-	-	52,870	-	-	3,250	-	-	1,646	-	-	387	-	-	12-Aug
13-Aug	-	-	53,115	-	-	3,278	-	-	1,653	-	-	449	-	-	13-Aug
14-Aug	-	-	53,328	-	-	3,307	-	-	1,659	-	-	511	-	-	14-Aug
15-Aug	-	-	53,493	-	-	-	-	-	1,664	-	-	581	-	-	15-Aug
16-Aug	-	-	53,632	-	-	-	-	-	1,670	-	-	646	-	-	16-Aug
17-Aug	-	-	53,740	-	-	-	-	-	1,674	-	-	704	-	-	17-Aug
18-Aug	-	-	53,817	-	-	-	-	-	1,678	-	-	766	-	-	18-Aug

a Last day of operations

ADF&G - Alaska Department of Fish and Game
DFO - Department of Fisheries and Oceans Canada
MEI - Metla Environmental Incorporated
TCC - Tanana Chiefs Conference
USFWS - United States Fish and Wildlife Service
VGG - Vuntut Gwitch'in Government
YDFDA - Yukon Delta Fisheries Development Association
YE - Yukon Energy
BSFA - Bering Sea Fisherman's Association
KDFN - Kwanlin Dün First Nation

2022 Daily and Cumulative SUMMER CHUM salmon test fishery CPUE, and escapements

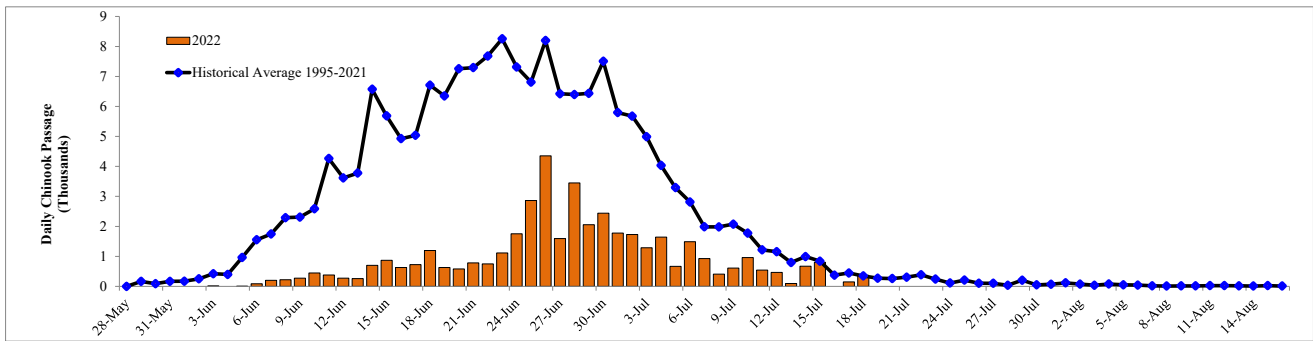
Preliminary project information, subject to change.

Date	Big Eddy and Middle Mouth Lower Yukon Test Fishery (Drift) - ADF&G and YDFDA			Pilot Station Sonar - ADF&G			Anvik River Sonar - ADF&G Escapement Goal 350,000-700,000 (BEG)			Gisasa River Weir - USFWS		Date
	Daily Counts	Daily CPUE	Cumulative CPUE	Daily Counts	Cumulative Counts	Median Cumulative Counts ^{ab}	Daily Counts	Cumulative Counts	Historical Median Cumulative Counts	Daily Counts	Cumulative Counts	
23-May												23-May
24-May												24-May
25-May												25-May
26-May												26-May
27-May												27-May
28-May												28-May
29-May												29-May
30-May												30-May
31-May						0						31-May
1-Jun					0	0						1-Jun
2-Jun	0	^{cd} 0.00	0.00	0	0	6						2-Jun
3-Jun	0	^{cd} 0.00	0.00	7	7	8						3-Jun
4-Jun	0	^{cd} 0.00	0.00	0	7	137						4-Jun
5-Jun	0	^{de} 0.00	0.00	2	9	307						5-Jun
6-Jun	0	^d 0.00	0.00	8	17	335						6-Jun
7-Jun	0	^d 0.00	0.00	1	18	532						7-Jun
8-Jun	0	^d 0.00	0.00	0	18	3,060						8-Jun
9-Jun	0	0.00	0.00	1	19	6,637						9-Jun
10-Jun	1	1.22	1.22	13	32	10,125						10-Jun
11-Jun	0	0.00	1.22	1	33	14,324						11-Jun
12-Jun	0	0.00	1.22	282	315	15,899						12-Jun
13-Jun	2	1.88	3.09	267	582	17,604						13-Jun
14-Jun	12	^d 15.91	19.01	917	1,499	27,224						14-Jun
15-Jun	3	2.85	21.85	1,141	2,640	49,101	68	68	323			15-Jun
16-Jun	40	37.80	59.65	1,018	3,658	75,822	159	227	196			16-Jun
17-Jun	1	^d 0.90	60.55	1,273	4,931	97,760	159	386	408			17-Jun
18-Jun	2	2.47	63.02	1,362	6,293	127,874	189	575	839			18-Jun
19-Jun	0	0.00	63.02	2,153	8,446	164,956	152	727	958			19-Jun
20-Jun	0	^d 0.00	63.02	1,289	9,735	189,871	116	843	1,737			20-Jun
21-Jun	0	0.00	63.02	1,355	11,090	210,981	208	1,051	1,836			21-Jun
22-Jun	138	124.98	188.00	677	11,767	234,307	116	1,167	2,713			22-Jun
23-Jun	173	149.89	337.89	334	12,101	268,189	129	1,296	3,276			23-Jun
24-Jun	22	20.39	358.28	5,564	17,665	309,594	54	1,350	5,031			24-Jun
25-Jun	4	3.66	361.94	34,473	52,138	340,747	104	1,454	12,532			25-Jun
26-Jun	0	^{cd} 0.00	357.70	45,738	97,876	384,858	131	1,585	16,763			26-Jun
27-Jun	21	19.84	381.79	28,053	125,929	459,086	144	1,729	21,707			27-Jun
28-Jun	73	^{cd} 68.17	449.96	16,961	142,890	517,587	209	1,938	27,899			28-Jun
29-Jun	25	23.35	473.30	14,140	157,030	607,323	160	2,098	35,839	-	-	29-Jun
30-Jun	3	2.52	475.82	21,164	178,194	734,928	438	2,536	48,449	0	0	30-Jun
1-Jul	0	0.00	475.82	24,484	202,678	839,727	548	3,084	61,403	1	1	1-Jul
2-Jul	98	88.09	563.91	17,597	220,275	934,201	96	3,180	75,778	8	9	2-Jul
3-Jul	27	25.82	589.73	7,178	227,453	1,071,117	306	3,486	94,099	20	29	3-Jul
4-Jul	2	1.95	591.68	5,791	233,244	1,155,990	684	4,170	117,829	28	57	4-Jul
5-Jul	0	0.00	591.68	18,448	251,692	1,191,045	1,583	5,753	133,440	20	77	5-Jul
6-Jul	9	10.69	602.37	17,756	269,448	1,229,756	2,255	8,008	164,230	34	111	6-Jul
7-Jul	1	1.02	603.39	10,066	279,514	1,267,283	2,223	10,231	185,290	39	150	7-Jul
8-Jul	6	5.71	609.10	8,344	287,858	1,315,546	3,829	14,060	202,756	76	226	8-Jul
9-Jul	75	71.15	680.25	5,809	293,667	1,358,253	4,844	18,904	231,480	201	427	9-Jul
10-Jul	62	57.90	738.15	9,001	302,668	1,385,649	3,919	22,823	257,156	292	719	10-Jul
11-Jul	15	14.23	752.38	12,120	314,788	1,425,214	1,966	24,789	278,765	291	1,010	11-Jul
12-Jul	7	6.72	759.10	17,996	332,784	1,479,202	1,582	26,371	292,454	162	1,172	12-Jul
13-Jul	36	34.84	793.93	24,855	357,639	1,515,161	972	27,343	306,471	128	1,300	13-Jul
14-Jul	4	5.55	799.48	15,357	372,996	1,543,887	1,134	28,477	325,540	233	1,533	14-Jul
15-Jul	1	^f 0.95	800.43	11,942	384,938	1,578,414	1,682	30,159	348,377	108	1,641	15-Jul
16-Jul				22,988	407,926	1,600,253	1,722	31,881	365,726	98	1,739	16-Jul
17-Jul				15,994	423,920	1,611,597	2,420	34,301	376,485	124	1,863	17-Jul
18-Jul				13,112	437,032	1,626,239	1,475	35,776	381,545	120	1,983	18-Jul
19-Jul							799	36,575	400,157	50	2,033	19-Jul
20-Jul							911	37,486	413,651	58	2,091	20-Jul
21-Jul							1,414	38,900	424,710	101	2,192	21-Jul
22-Jul							2,199	41,099	430,062	77	2,269	22-Jul
23-Jul							1,126	42,225	435,065	49	2,318	23-Jul
24-Jul							1,126	43,351	444,075	206	2,524	24-Jul
25-Jul							1,262	44,613	451,542	261	2,785	25-Jul
26-Jul							967	^f 45,580	455,876	152	2,937	26-Jul
27-Jul										92	3,029	27-Jul
28-Jul										124	3,153	28-Jul
29-Jul										147	^f 3,300	29-Jul
30-Jul												30-Jul
31-Jul												31-Jul
1-Aug												1-Aug

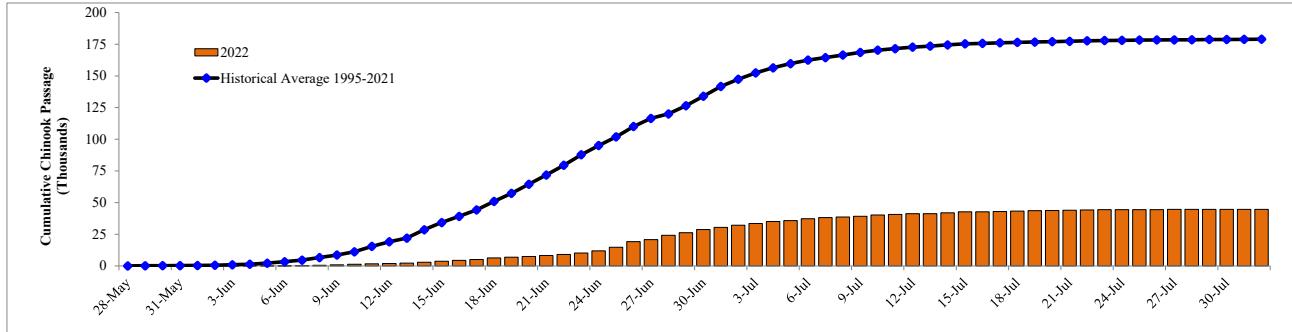
a Includes 2003, 2005, 2008, and 2019-2021
 b Historical median based on late run timing
 c AM drift(s) were cancelled
 d PM drift(s) were cancelled
 e All drift(s) were cancelled
 f Last day of operation

ADF&G - Alaska Department of Fish and Game
 DFO - Department of Fisheries and Oceans Canada
 MEI - Metla Environmental Incorporated
 TCC - Tanana Chiefs Conference
 USFWS - United States Fish and Wildlife Service
 VGG - Vuntut Gwitch'in Government
 YDFDA - Yukon Delta Fisheries Development Association

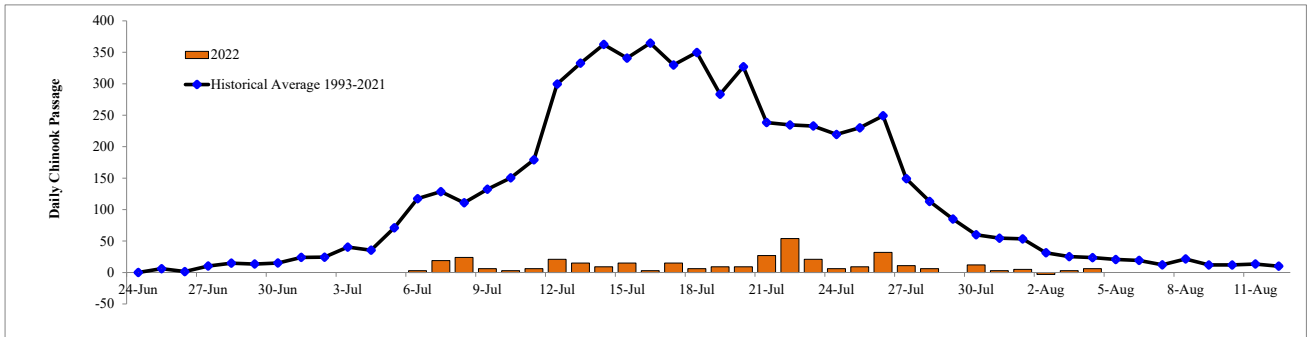
2022 Daily and Cumulative SUMMER CHUM salmon test fishery CPUE, and escapements							
Preliminary project information, subject to change.							
Chena River Tower - ADF&G				Salcha River Tower - ADF&G			
Date	Daily Counts	Cumulative Counts	Historical Median Cumulative Counts	Daily Counts	Cumulative Counts	Historical Median Cumulative Counts	Date
23-Jun							23-Jun
24-Jun							24-Jun
25-Jun							25-Jun
26-Jun							26-Jun
27-Jun							27-Jun
28-Jun							28-Jun
29-Jun							29-Jun
30-Jun							30-Jun
1-Jul							1-Jul
2-Jul	0	0	0	0	0	0	2-Jul
3-Jul	0	0	0	0	0	0	3-Jul
4-Jul	0	0	0	0	0	0	4-Jul
5-Jul	0	0	0	0	0	0	5-Jul
6-Jul	9	9	9	0	0	0	6-Jul
7-Jul	3	12	19	0	0	0	7-Jul
8-Jul	12	24	26	0	0	3	8-Jul
9-Jul	9	33	25	0	0	5	9-Jul
10-Jul	0	33	35	0	0	0	10-Jul
11-Jul	6	39	51	0	^a 0	23	11-Jul
12-Jul	6	45	63	0	^a 0	35	12-Jul
13-Jul	34	79	105	0	^a 0	64	13-Jul
14-Jul	15	94	145	0	^a 0	80	14-Jul
15-Jul	6	100	201	0	^a 0	140	15-Jul
16-Jul	6	106	234	0	^a 0	252	16-Jul
17-Jul	6	112	354	0	^a 0	344	17-Jul
18-Jul	0	112	468	0	^a 0	533	18-Jul
19-Jul	6	118	620	0	^a 0	738	19-Jul
20-Jul	6	124	773	0	0	1,005	20-Jul
21-Jul	0	124	942	7	7	1,372	21-Jul
22-Jul	17	141	1,282	48	55	1,554	22-Jul
23-Jul	21	162	1,594	27	82	1,854	23-Jul
24-Jul	9	171	1,891	12	94	2,018	24-Jul
25-Jul	9	180	2,428	11	105	2,586	25-Jul
26-Jul	0	180	3,265	3	108	3,263	26-Jul
27-Jul	5	185	3,865	21	129	3,612	27-Jul
28-Jul	30	215	4,591	0	129	4,173	28-Jul
29-Jul	6	221	4,773	33	162	5,658	29-Jul
30-Jul	60	281	4,773	198	360	7,121	30-Jul
31-Jul	180	461	4,773	41	401	8,330	31-Jul
1-Aug	80	541	5,300	333	734	10,066	1-Aug
2-Aug	84	625	5,956	110	844	11,566	2-Aug
3-Aug	90	715	6,428	108	952	12,797	3-Aug
4-Aug	84	799	6,817	66	1,018	14,216	4-Aug
5-Aug	98	^b 897	7,198	44	1,062	15,679	5-Aug
6-Aug				94	1,156	17,252	6-Aug
7-Aug				33	1,189	18,910	7-Aug
8-Aug				8	1,197	20,202	8-Aug
9-Aug				-	-	20,648	9-Aug
10-Aug				-	-	21,057	10-Aug
Acronyms							
Visual counts and sonar are a nonoperational due to high water b Last day of operation				ADF&G - Alaska Department of Fish and Game DFO - Department of Fisheries and Oceans Canada MEI - Metla Environmental Incorporated TCC - Tanana Chiefs Conference USFWS - United States Fish and Wildlife Service VGG - Vuntut Gwitch'in Government YDFDA - Yukon Delta Fisheries Development Association			



Note: Historical average does not include 1998-1999, 2001, and 2009.
 Figure 1. Daily sonar passage counts attributed to Chinook salmon, located near the community of Pilot Station, Yukon River.

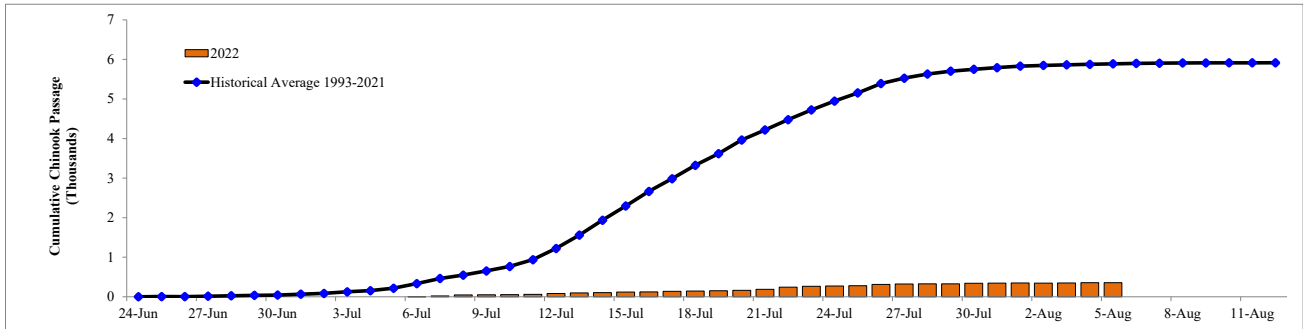


Note: Historical average does not include 1998-1999, 2001, and 2009.
 Figure 2. Cumulative sonar passage counts attributed to Chinook salmon, located near the community of Pilot Station, Yukon River.



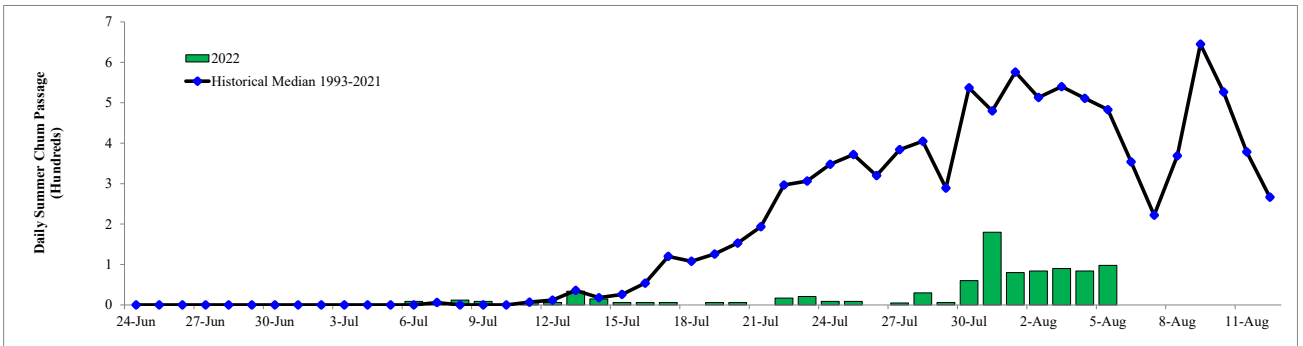
Note: Historical average does not include 1995, 1996, 2000, 2002, 2003, 2005, 2011, or 2020.

Figure 3. Estimated daily counts attributed to Chinook salmon, located on the Chena River.



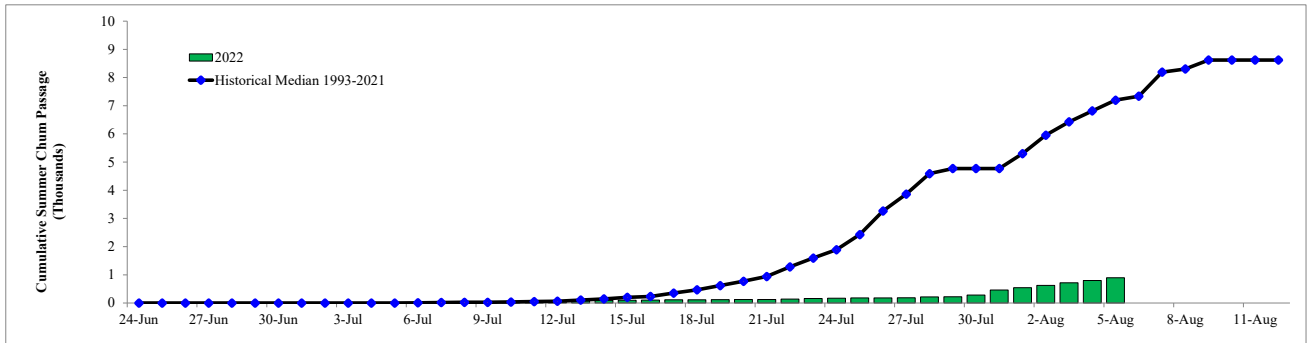
Note: Historical average does not include 1995, 1996, 2000, 2002, 2003, 2005, 2011, or 2020.

Figure 4. Estimated cumulative counts attributed to Chinook salmon, located on the Chena River.



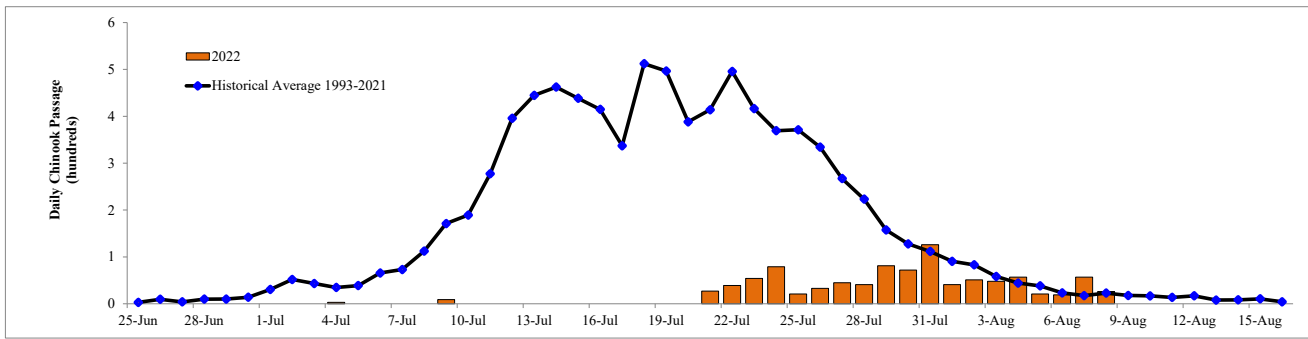
Note: Historical median does not include 1995, 1996, 2000, 2002, 2003, 2005, 2011, or 2020.

Figure 5. Estimated daily counts attributed to summer chum salmon, located on the Chena River.

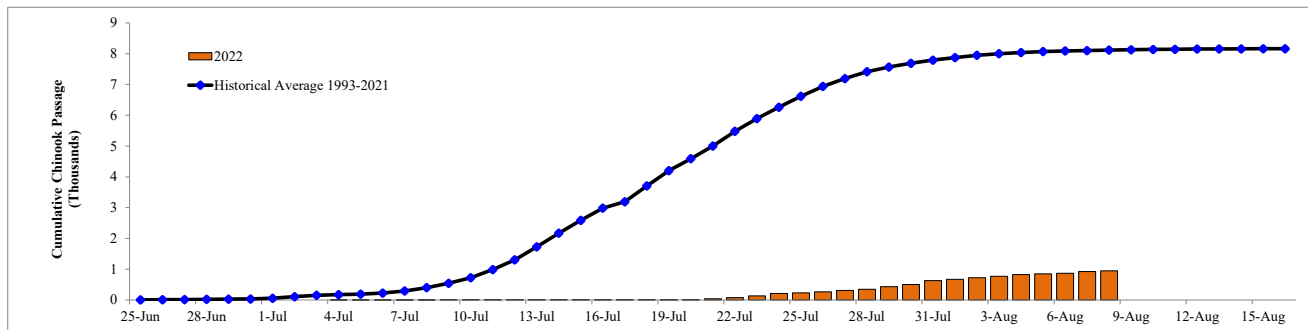


Note: Historical median does not include 1995, 1996, 2000, 2002, 2003, 2005, 2011, or 2020.

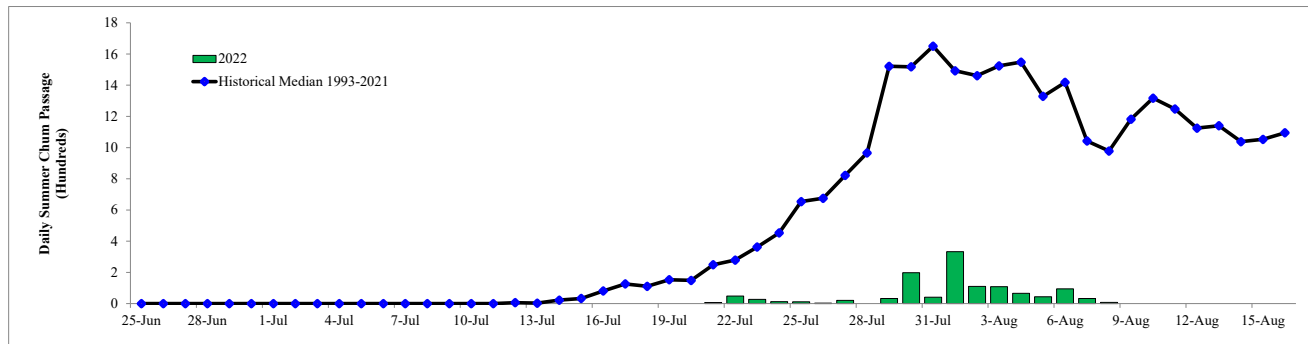
Figure 6. Estimated cumulative counts attributed to summer chum salmon, located on the Chena River.



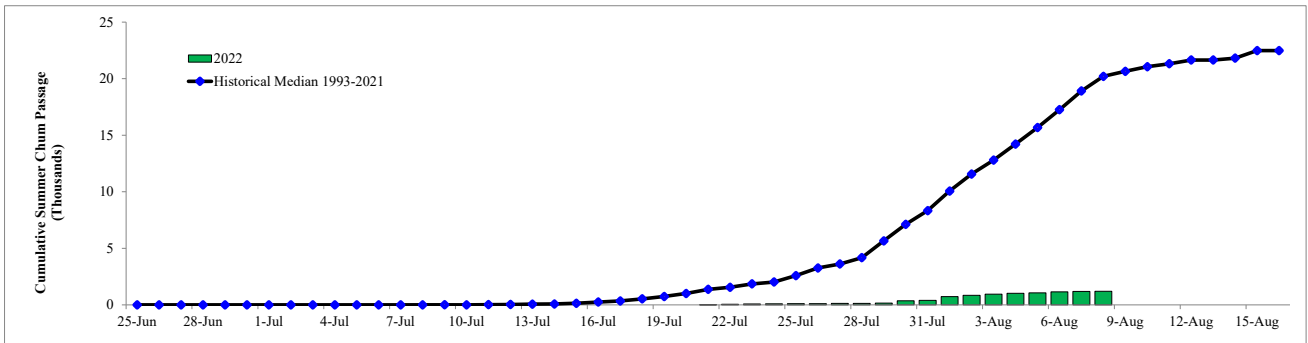
Note: Historical average does not include 1996, 2003, 2008, 2011, 2014, or 2020.
 Figure 7. Estimated daily counts attributed to Chinook salmon, located on the Salcha River.



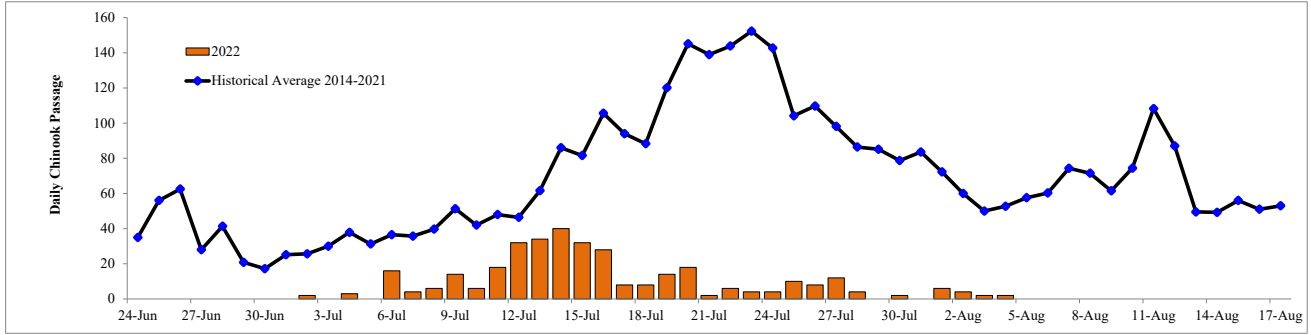
Note: Historical average does not include 1996, 2003, 2008, 2011, 2014, or 2020.
 Figure 8. Estimated cumulative counts attributed to Chinook salmon, located on the Salcha River.



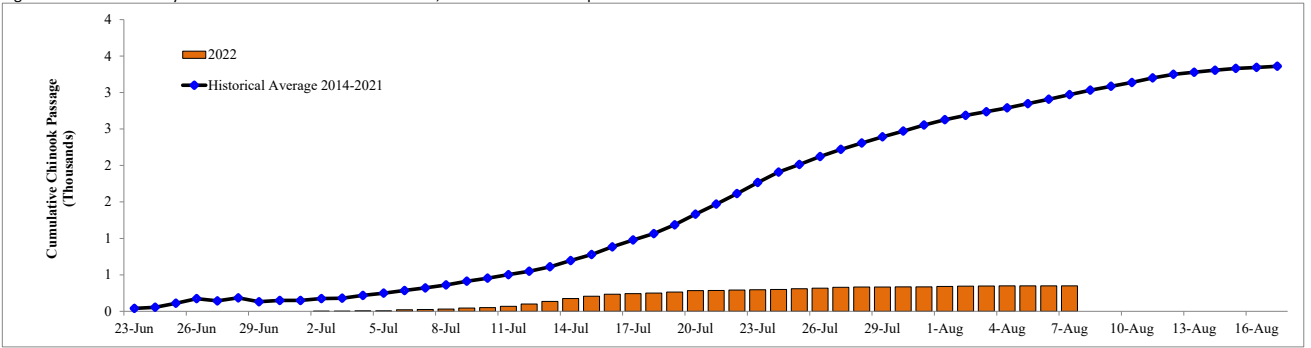
Note: Historical median does not include 1996, 2003, 2008, 2011, 2014, or 2020.
 Figure 9. Estimated daily counts attributed to summer chum salmon, located on the Salcha River.



Note: Historical median does not include 1996, 2003, 2008, 2011, 2014, or 2020.
 Figure 10. Estimated cumulative counts attributed to summer chum salmon, located on the Salcha River.



Note: Historical average does not include 2020.
 Figure 11. Estimated daily counts attributed to Chinook salmon, located on the Porcupine River.



Note: Historical average does not include 2020.
 Figure 12. Estimated cumulative counts attributed to Chinook salmon, located on the Porcupine River.

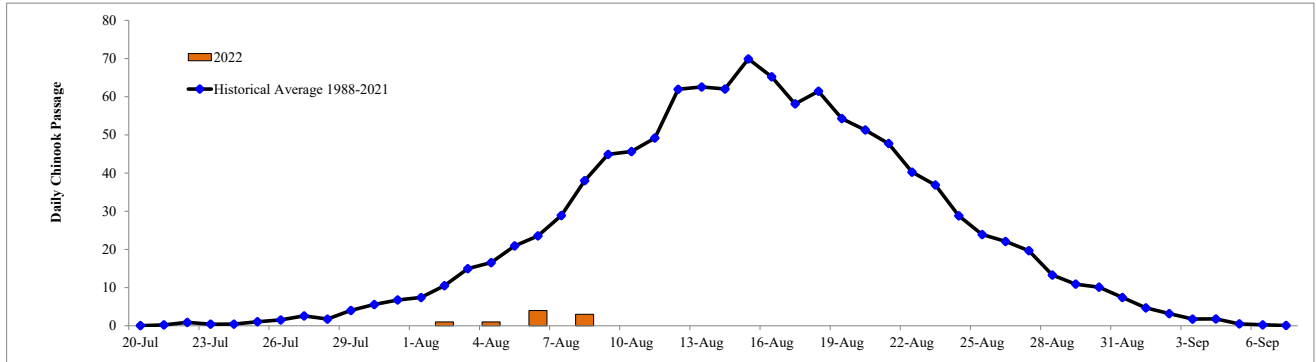


Figure 13. Estimated daily counts attributed to Chinook salmon, located on the Whitehorse ladder.

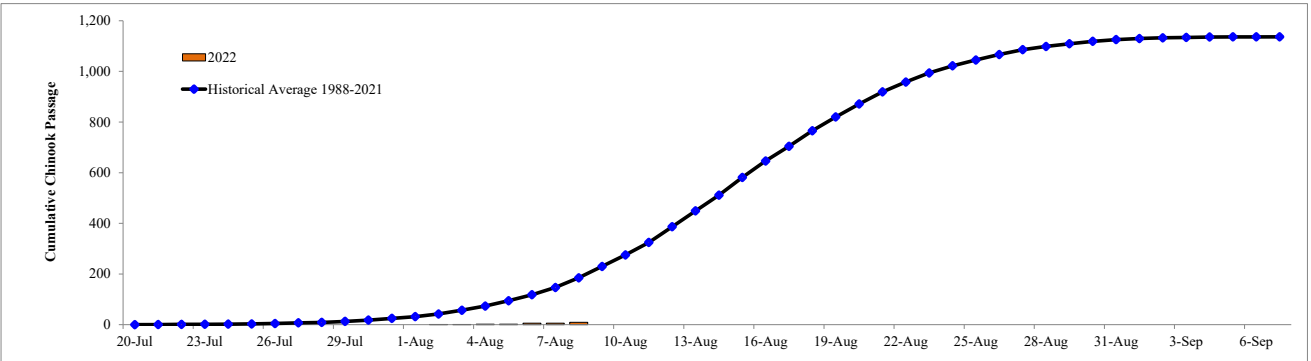


Figure 14. Estimated cumulative counts attributed to Chinook salmon, located on the Whitehorse ladder.

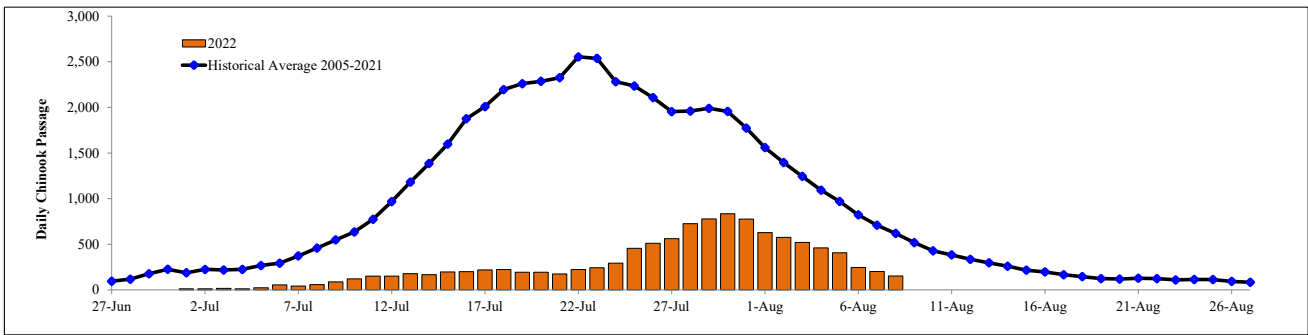


Figure 5. Historical Chinook salmon daily passage average at Eagle Sonar compared to 2022.

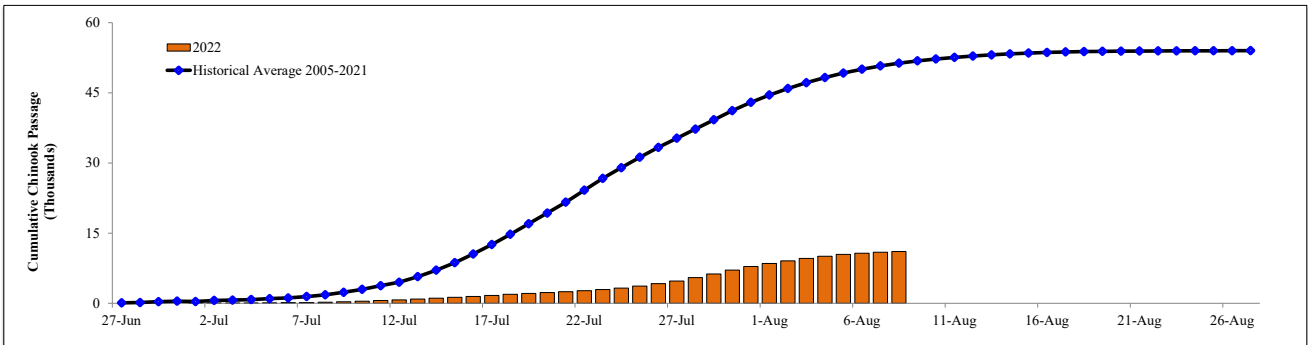


Figure 6. Historical Chinook salmon cumulative passage average at Eagle Sonar compared to 2022.

Approximate Location of Chinook Salmon Pulses by Date of the Pulse Past Pilot Station Continuing Up the Yukon River, 2022.

Community	RIVER MILES	DAYS BETWEEN SITES	FIRST FISH	EARLY FISH	PULSE 1	PULSE 2	PULSE 3	PULSE 4	PULSE 5
	Number of Days								
	Dates at Pilot		7-Jun	8-Jun	23-Jun	28-Jun	6-Jul		
	Pilot Station Passage			8,723	11,679	15,051			
Travels in Miles Per Day	40	40	40	40	40	40	40	40	40
Emmonak	24	2	4-Jun	5-Jun	20-Jun	25-Jun	3-Jul	-	-
Y1/Y2 Border	63	2	5-Jun	6-Jun	21-Jun	26-Jun	4-Jul	-	-
Mt Village	87	1	6-Jun	7-Jun	22-Jun	27-Jun	5-Jul	-	-
Pilot Station	123	0	7-Jun	8-Jun	23-Jun	28-Jun	6-Jul	-	-
Marshall	161	1	8-Jun	9-Jun	24-Jun	29-Jun	7-Jul	-	-
Y2/Y3 Border	193	2	9-Jun	10-Jun	25-Jun	30-Jun	8-Jul	-	-
Russian Mission	213	2	9-Jun	10-Jun	25-Jun	30-Jun	8-Jul	-	-
Holy Cross	279	4	11-Jun	12-Jun	27-Jun	2-Jul	10-Jul	-	-
Y3/Y4A Lower Border	300	4	11-Jun	12-Jun	27-Jun	2-Jul	10-Jul	-	-
Travels in Miles Per Day	40	40	40	40	40	40	40	40	40
Anvik	318	5	12-Jun	13-Jun	28-Jun	3-Jul	11-Jul	-	-
Grayling	336	5	12-Jun	13-Jun	28-Jun	3-Jul	11-Jul	-	-
Y4A Lower/Y4A Upper Border	423	8	15-Jun	16-Jun	1-Jul	6-Jul	14-Jul	-	-
Kaltag	450	8	15-Jun	16-Jun	1-Jul	6-Jul	14-Jul	-	-
Koyukuk	502	9	16-Jun	17-Jun	2-Jul	7-Jul	15-Jul	-	-
Y4A Upper/Y4BC Border	513	10	17-Jun	18-Jun	3-Jul	8-Jul	16-Jul	-	-
Galena	530	10	17-Jun	18-Jun	3-Jul	8-Jul	16-Jul	-	-
Ruby	581	11	18-Jun	19-Jun	4-Jul	9-Jul	17-Jul	-	-
Y4BC/Y5ABC Border	664	14	21-Jun	22-Jun	7-Jul	12-Jul	20-Jul	-	-
Tanana	695	14	21-Jun	22-Jun	7-Jul	12-Jul	20-Jul	-	-
Rapids	731	15	22-Jun	23-Jun	8-Jul	13-Jul	21-Jul	-	-
Rampart	763	16	23-Jun	24-Jun	9-Jul	14-Jul	22-Jul	-	-
Y5ABC/Y5D Lower Border	832	18	25-Jun	26-Jun	11-Jul	16-Jul	24-Jul	-	-
Stevens Village	847	18	25-Jun	26-Jun	11-Jul	16-Jul	24-Jul	-	-
Beaver	932	20	27-Jun	28-Jun	13-Jul	18-Jul	26-Jul	-	-
Y5D Lower/Y5D Middle Border	952	21	28-Jun	29-Jun	14-Jul	19-Jul	27-Jul	-	-
Fort Yukon	1,002	22	29-Jun	30-Jun	15-Jul	20-Jul	28-Jul	-	-
Y5D Middle/Y5D Upper	1,039	23	30-Jun	1-Jul	16-Jul	21-Jul	29-Jul	-	-
Circle	1,061	23	30-Jun	1-Jul	16-Jul	21-Jul	29-Jul	-	-
Canadian Border	1,224	28	5-Jul	6-Jul	21-Jul	26-Jul	3-Aug	-	-

Approximate Location of Chinook Salmon Pulses Up the Tanana River (35 miles per day).

Manley	765	16	23-Jun	24-Jun	9-Jul	14-Jul	22-Jul	-	-
Kantishna	793	17	24-Jun	25-Jun	10-Jul	15-Jul	23-Jul	-	-
Nenana/Toklat	860	18	25-Jun	26-Jun	11-Jul	16-Jul	24-Jul	-	-
Salcha River	965	21	28-Jun	29-Jun	14-Jul	19-Jul	27-Jul	-	-
Delta River	1,031	23	30-Jun	1-Jul	16-Jul	21-Jul	29-Jul	-	-
Bluff Cabin Slough	1,049	23	30-Jun	1-Jul	16-Jul	21-Jul	29-Jul	-	-

Approximate Location of Chinook Salmon Pulses Up the Koyukuk River (40 miles per day).

Koyukuk River Mouth	508	10	16-Jun	17-Jun	2-Jul	7-Jul	15-Jul	-	-
Huslia	711	15	21-Jun	22-Jun	7-Jul	12-Jul	20-Jul	-	-
Hughes	881	19	25-Jun	26-Jun	11-Jul	16-Jul	24-Jul	-	-
Allakaket/Alatna	956	21	27-Jun	28-Jun	13-Jul	18-Jul	26-Jul	-	-

Approximate Location of Summer chum Salmon Pulses by Date of the Pulse Past Pilot Station Continuing Up the Yukon River, 2022.

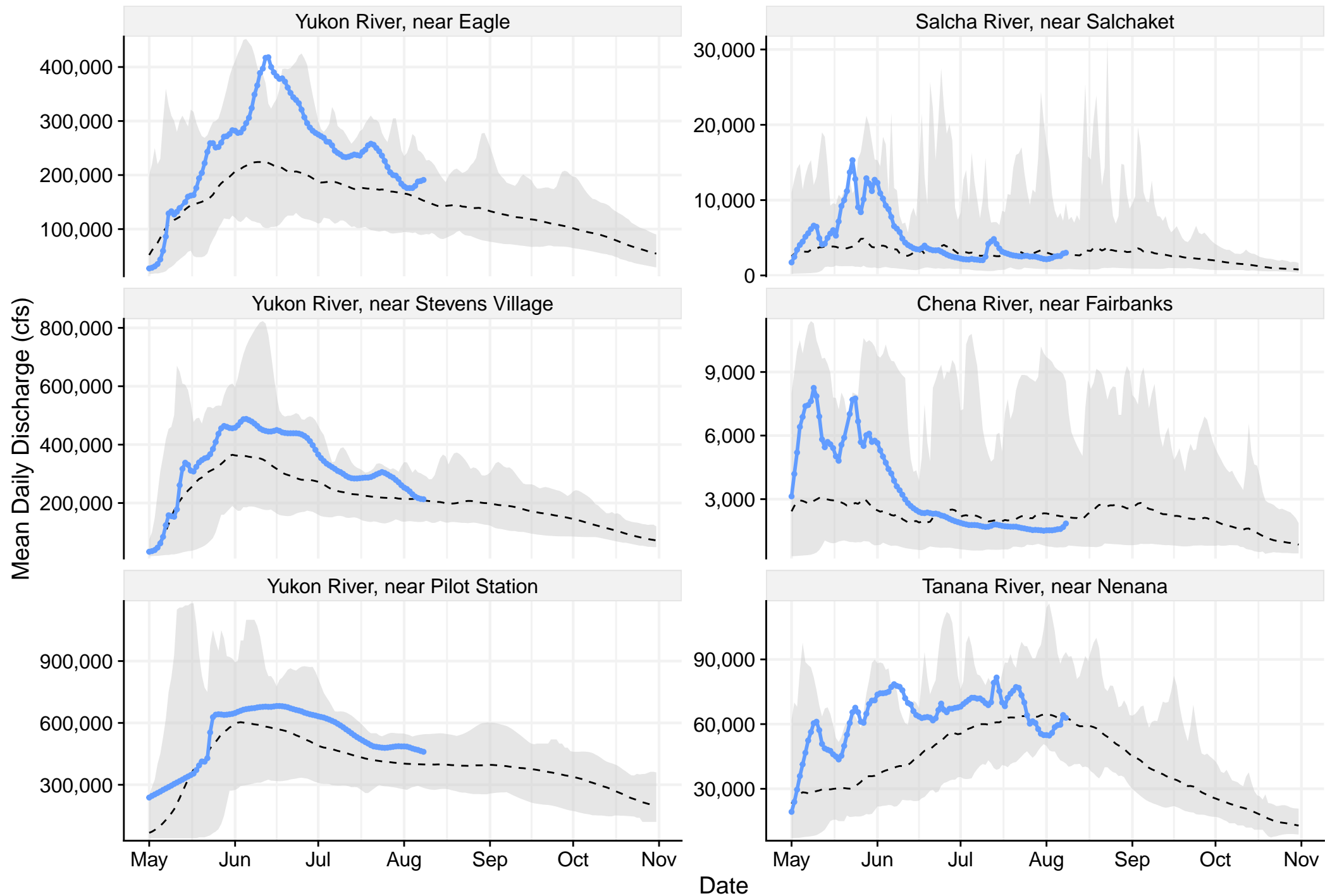
Community	RIVER MILES	DAYS BETWEEN SITES	FIRST FISH	EARLY FISH	PULSE 1	PULSE 2	PULSE 3	PULSE 4	PULSE 5
	Number of Days								
	Dates at Pilot		13-Jun	14-Jun	24-Jun	30-Jun	5-Jul	10-Jul	
	Pilot Station Passage			11,519	144,929	76,214	60,423		
	Travel in miles per day	25	25	25	25	25	25	25	25
Emmonak	24	4	9-Jun	10-Jun	20-Jun	26-Jun	1-Jul	6-Jul	-
Y1/Y2 Border	63	2	12-Jun	13-Jun	23-Jun	29-Jun	4-Jul	9-Jul	-
Mt. Village	87	1	12-Jun	13-Jun	23-Jun	29-Jun	4-Jul	9-Jul	-
Pilot Station	123	0	13-Jun	14-Jun	24-Jun	30-Jun	5-Jul	10-Jul	-
Marshall	161	2	15-Jun	16-Jun	26-Jun	2-Jul	7-Jul	12-Jul	-
Y2/Y3 Border	193	3	16-Jun	17-Jun	27-Jun	3-Jul	8-Jul	13-Jul	-
Russian Mission	213	4	17-Jun	18-Jun	28-Jun	4-Jul	9-Jul	14-Jul	-
Holy Cross	279	6	19-Jun	20-Jun	30-Jun	6-Jul	11-Jul	16-Jul	-
Y3/Y4A Lower Border	300	7	20-Jun	21-Jun	1-Jul	7-Jul	12-Jul	17-Jul	-
Anvik	318	8	21-Jun	22-Jun	2-Jul	8-Jul	13-Jul	18-Jul	-
Grayling	336	9	22-Jun	23-Jun	3-Jul	9-Jul	14-Jul	19-Jul	-
Kaltag	450	13	26-Jun	27-Jun	7-Jul	13-Jul	18-Jul	23-Jul	-
Koyukuk	502	15	28-Jun	29-Jun	9-Jul	15-Jul	20-Jul	25-Jul	-
Y4A Upper/Y4BC Border	513	16	29-Jun	30-Jun	10-Jul	16-Jul	21-Jul	26-Jul	-
Galena	530	16	29-Jun	30-Jun	10-Jul	16-Jul	21-Jul	26-Jul	-
Ruby	581	18	1-Jul	2-Jul	12-Jul	18-Jul	23-Jul	28-Jul	-
Y4BC/Y5ABC Border	664	22	5-Jul	6-Jul	16-Jul	22-Jul	27-Jul	1-Aug	-
Tanana	695	23	6-Jul	7-Jul	17-Jul	23-Jul	28-Jul	2-Aug	-
Manley	765	26	9-Jul	10-Jul	20-Jul	26-Jul	31-Jul	5-Aug	-
Kantishna	793	27	10-Jul	11-Jul	21-Jul	27-Jul	1-Aug	6-Aug	-
Nenana/Toklat	860	29	12-Jul	13-Jul	23-Jul	29-Jul	3-Aug	8-Aug	-
Salcha River	965	34	17-Jul	18-Jul	28-Jul	3-Aug	8-Aug	13-Aug	-
Delta River	1,031	36	19-Jul	20-Jul	30-Jul	5-Aug	10-Aug	15-Aug	-
Bluff Cabin Slough	1,049	37	20-Jul	21-Jul	31-Jul	6-Aug	11-Aug	16-Aug	-

Note: Early groups of Summer chum salmon may not contain a large number of Tanana-bound stocks until later in the season.

Approximate Location of Summer Chum Salmon Pulses Up the Koyukuk River (25 miles per day).

Koyukuk River Mouth	508	15	28-Jun	29-Jun	9-Jul	15-Jul	20-Jul	25-Jul	-
Huslia	711	24	7-Jul	8-Jul	18-Jul	24-Jul	29-Jul	3-Aug	-
Hughes	881	30	13-Jul	14-Jul	24-Jul	30-Jul	4-Aug	9-Aug	-
Allakaket/Alatna	956	33	16-Jul	17-Jul	27-Jul	2-Aug	7-Aug	12-Aug	-

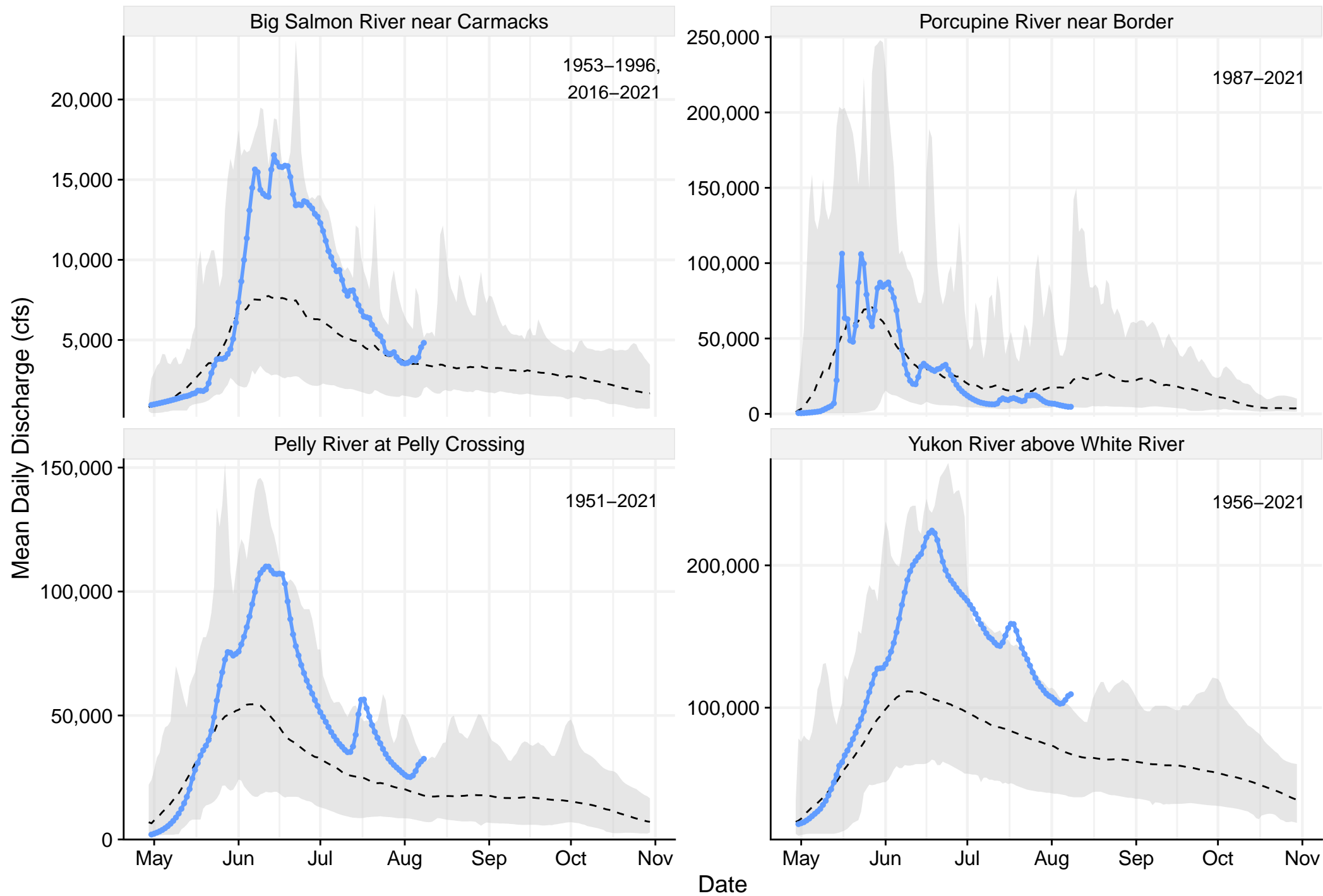
Water Levels Update 08/09/2022



—●— 2022 1977 – 2021 Min–Max Average (dashed)

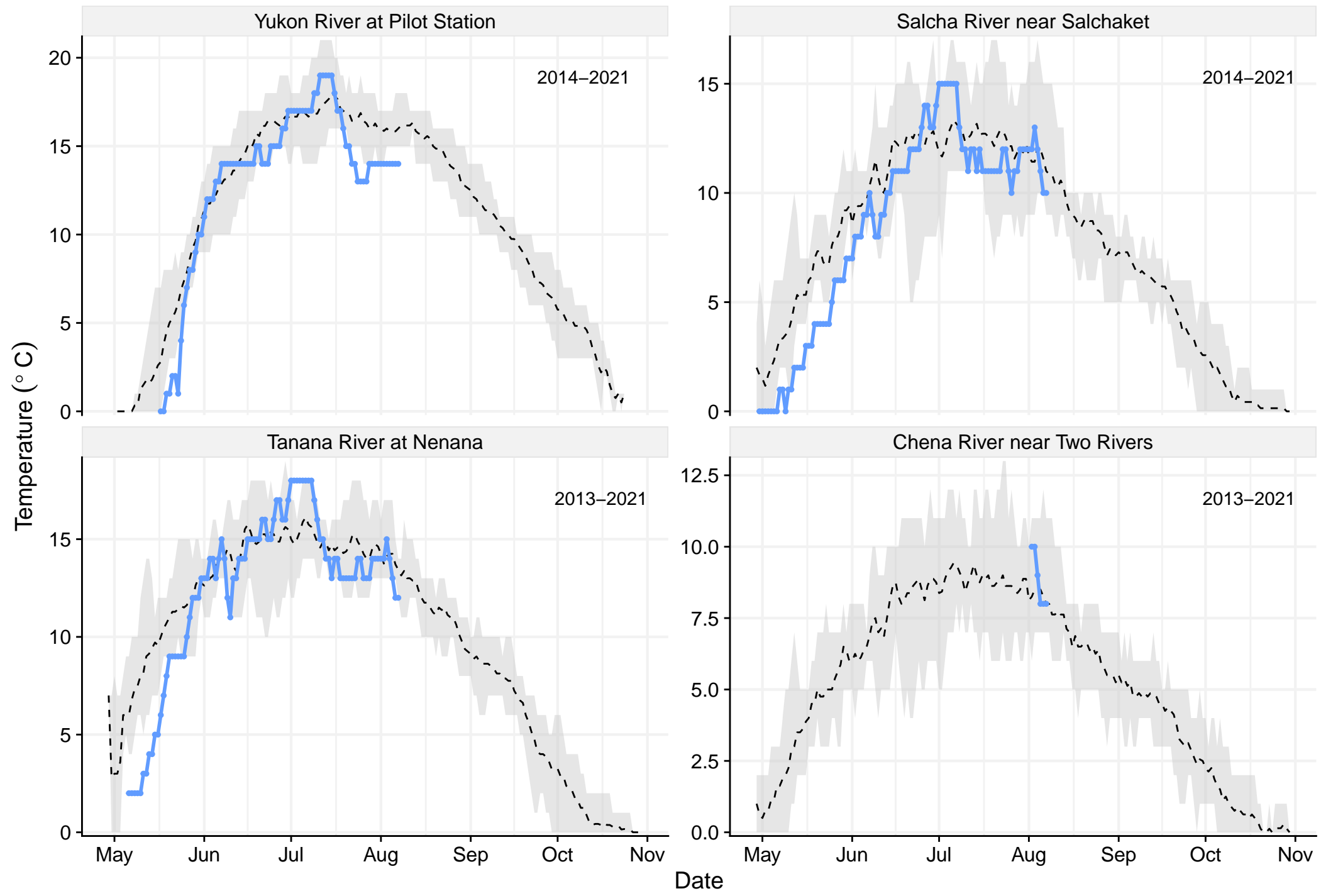
Source: <https://waterdata.usgs.gov/ak/nwis/current?>

Canada Water Levels Update 08/09/2022



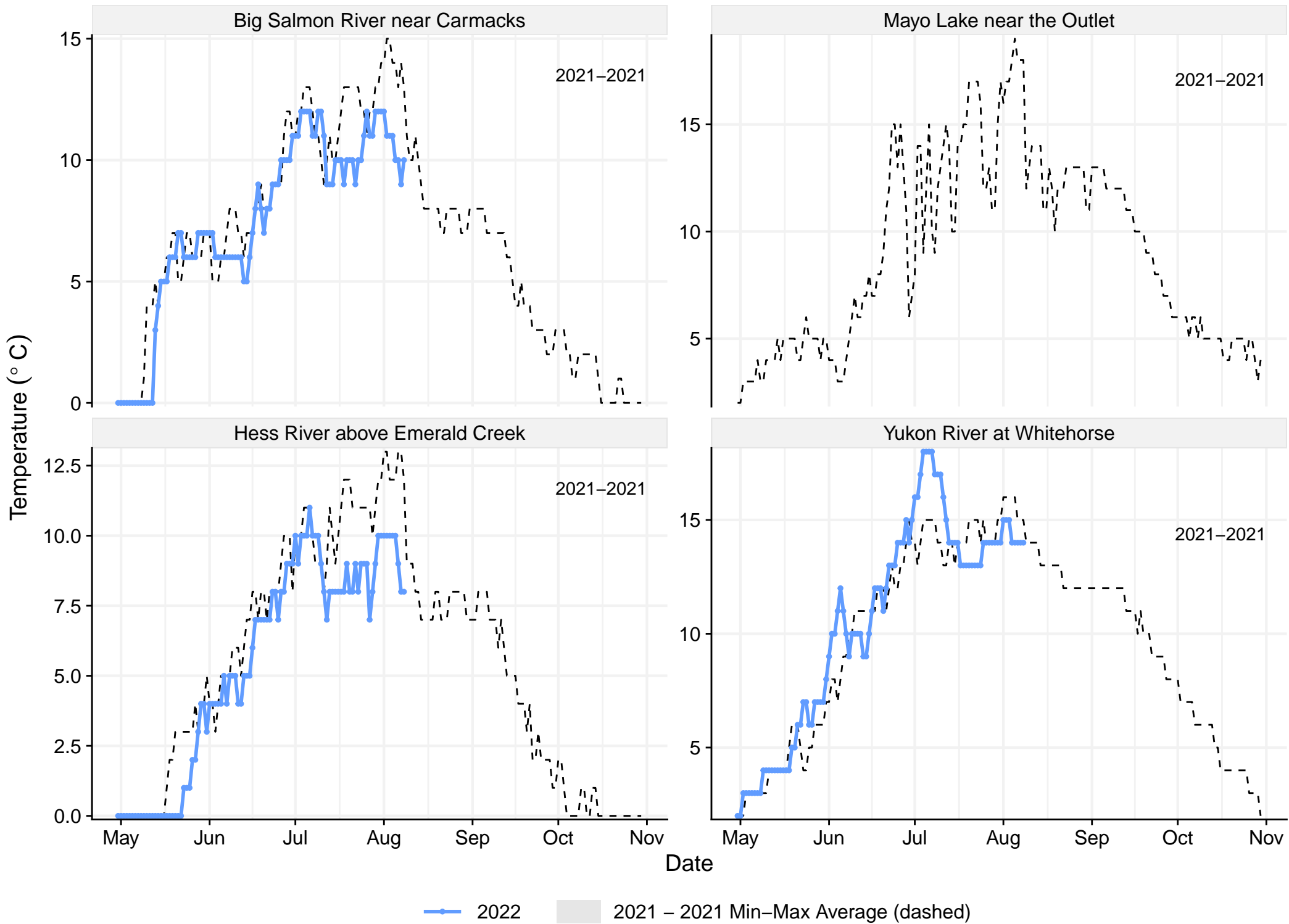
—●— 2022 ■ 1951 – 2021 Min–Max Average (dashed)

Water Temperature Update 08/09/2022



—●— 2022 2013 – 2021 Min–Max Average (dashed)

Canada Water Temperature Update 08/09/2022



—●— 2022 2021 – 2021 Min–Max Average (dashed)