

Yukon Area project updates of daily and cumulative fall chum salmon test fishery CPUEs and escapement estimates, 2022.

**\*\*All data are preliminary (subject to revision) until formally published in respective agency publications. \*\***

**\*\*For more information on individual projects and qualifiers of the daily data please contact ADF&G at 907-459-7274.**

Date	Lower Yukon Drift Gillnet Test Fishery Assessment RM 20			Mt. Village Drift Gillnet Test Fishery Assessment RM 87			Mainstem Yukon Sonar Near Pilot Station Drainagewide Goal: 300,000-600,000 (SEG)		
	Daily CPUE	Cumulative CPUE	Average Cumulative	Daily CPUE	Cumulative CPUE	Median Cumulative	Daily Passage	Cumulative Passage	Median Cumulative
16-Jul	6.78	6.78	26.32						
17-Jul	0.00	6.78	58.34						
18-Jul	-	-	96.11			57.96			
19-Jul	-	-	127.14			126.27			13,121
20-Jul	-	-	143.51			176.57			32,476
21-Jul	-	-	155.48			208.40			47,286
22-Jul	-	-	171.31			237.57			57,861
23-Jul	-	-	186.36			255.60			85,737
24-Jul	-	-	202.73			282.37			97,375
25-Jul	-	-	215.34			321.11			106,941
26-Jul	-	-	231.76			370.49			120,277
27-Jul	-	-	254.23			377.48			125,261
28-Jul	-	-	280.85			443.42			134,902
29-Jul	-	-	313.57			506.40			146,334
30-Jul	-	-	340.94			537.14			149,614
31-Jul	-	-	377.36			554.23			164,231
1-Aug	-	-	419.05			608.18			195,612
2-Aug	-	-	453.10			624.18			200,675
3-Aug	-	-	479.88			667.03			205,555
4-Aug	-	-	506.57			736.97			219,755
5-Aug	-	-	536.37			774.82			241,211
6-Aug	-	-	577.11			790.55			260,524
7-Aug	-	-	610.43			801.76			270,007
8-Aug	-	-	640.64			821.33			279,271
9-Aug	-	-	663.54			906.36			306,724
10-Aug	-	-	687.27			1,051.44			321,660
11-Aug	-	-	706.90			1,126.18			336,478
12-Aug	-	-	764.24			1,177.34			351,687
13-Aug	-	-	839.96			1,199.77			368,361
14-Aug	-	-	880.76			1,233.59			392,646
15-Aug	-	-	953.35			1,300.64			409,832
16-Aug	-	-	1,031.21			1,371.74			413,053
17-Aug	-	-	1,064.81			1,419.04			421,571
18-Aug	-	-	1,117.40			1,526.79			470,680
19-Aug	-	-	1,161.21			1,562.50			494,537
20-Aug	-	-	1,194.52			1,568.00			517,157
21-Aug	-	-	1,226.42			1,575.50			605,769
22-Aug	-	-	1,245.24			1,635.43			630,062
23-Aug	-	-	1,284.14			1,663.97			635,590
24-Aug	-	-	1,307.49			1,673.11			637,043
25-Aug	-	-	1,341.76			1,710.46			639,470
26-Aug	-	-	1,364.33			1,735.21			642,528
27-Aug	-	-	1,407.13			1,747.77			649,517
28-Aug	-	-	1,427.96			1,786.09			660,593
29-Aug	-	-	1,440.47			1,825.24			684,642
30-Aug	-	-	1,447.18			1,843.38			691,063
31-Aug	-	-	1,458.58			1,865.15			695,908
1-Sep	-	-	1,469.98			1,875.82			699,599
2-Sep	-	-	1,479.85			1,903.64			701,516
3-Sep	-	-	1,489.01			1,934.26			702,932
4-Sep	-	-	1,492.98			1,963.79			704,862
5-Sep	-	-	1,497.35			1,990.73			705,997
6-Sep	-	-	1,503.73			1,999.93			706,423
7-Sep	-	-	1,507.34			2,004.58			706,630
8-Sep	-	-	1,512.99			2,011.42			
9-Sep	-	-	1,516.78			2,017.98			
10-Sep	-	-	1,519.19			2,024.55			
11-Sep						2,035.33			
12-Sep						2,035.33			
13-Sep									
14-Sep									

For a recording of the most recent Lower Yukon Test Fish Catch Information please call 1 (866) 479-7387 (toll free) outside of Fairbanks; in Fairbanks call (907) 459-7387.

Note: test fishery data may be sent out with the mornings CPUE which will alter when the evening drifts are included.

Questions regarding *fall season* can be directed to Area Manager Christy Gleason (christine.gleason@alaska.gov), or Research Biologist Bonnie Borba (bonnie.borba@alaska.gov).

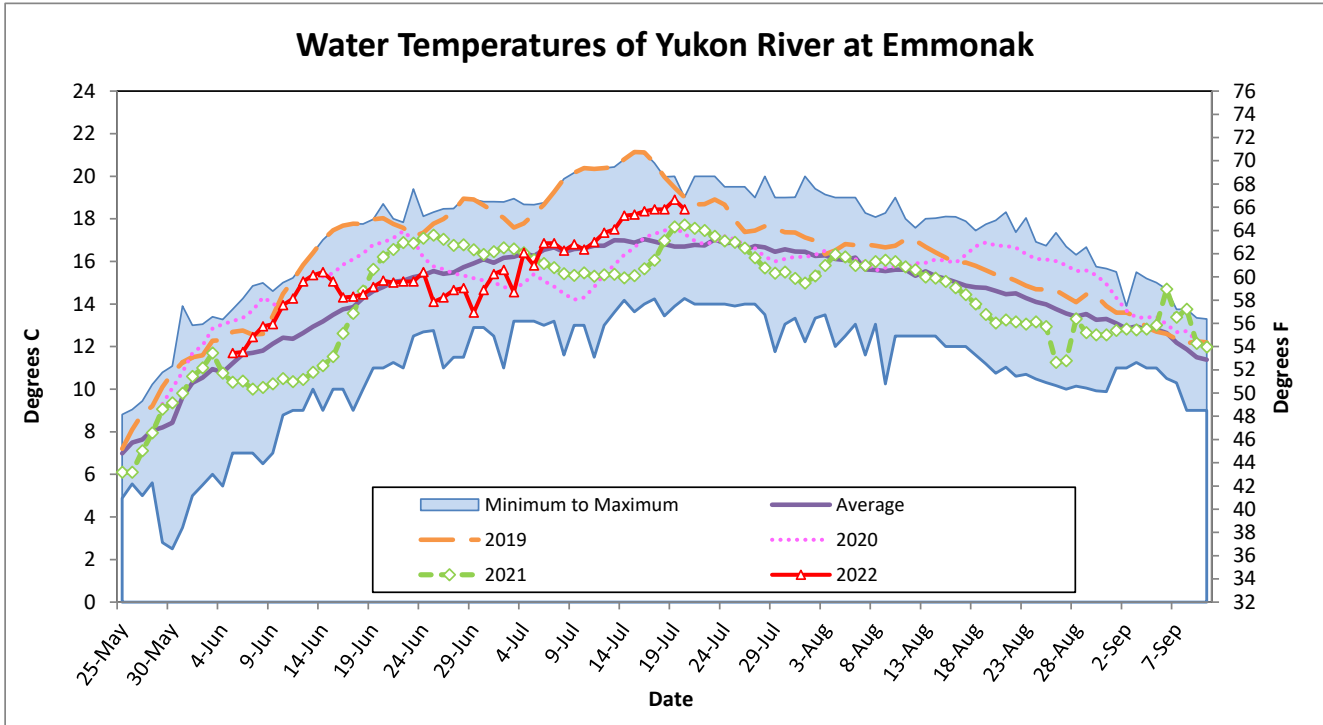


Figure 6.3. Average daily water temperatures collected (from both manual 1984–present and loggers 2004–2021) in the Yukon River near Emmonak, comparing 2022 and select years to historical minimum, maximum, and average.

\* Please note that current year measurements are taken with a handheld thermometer and are preliminary.

\*\* Some days may only have a single measurement resulting in a reported value skewed from the expected daily average.

2022 Daily and Cumulative CHINOOK salmon test fishery CPUE, and escapements

Preliminary project information, subject to change

	Big Eddy Lower Yukon Test Fishery (Set) - ADF&G & YDFDA				Lower Yukon Test Fishery (Drift)- ADF&G & YDFDA				Pilot Station Sonar - ADF&G			Date
	Daily Counts	Daily CPUE	Cumulative CPUE <sup>a</sup>	Average Cumulative CPUE <sup>a</sup>	Daily Counts	Daily CPUE	Cumulative CPUE	Average Cumulative CPUE <sup>a</sup>	Daily Counts	Cumulative Counts	Average Cumulative Counts <sup>g</sup>	
24-May												24-May
25-May												25-May
26-May												26-May
27-May												27-May
28-May												28-May
29-May												29-May
30-May												30-May
31-May												31-May
1-Jun									0	0	166	1-Jun
2-Jun					0	<sup>d</sup> 0.00	0.00	12.03	0	0	257	2-Jun
3-Jun					0	<sup>de</sup> 0.00	0.00	14.31	15	15	535	3-Jun
4-Jun					0	<sup>e</sup> 0.00	0.00	16.41	0	15	782	4-Jun
5-Jun	3	0.75	0.75	1.19	0	<sup>de</sup> 0.00	0.00	18.68	5	20	1,101	5-Jun
6-Jun	4	0.17	0.92	1.53	0	<sup>f</sup> 0.00	0.00	21.43	87	107	1,974	6-Jun
7-Jun	5	0.21	1.13	1.85	0	<sup>e</sup> 0.00	0.00	29.84	204	311	2,330	7-Jun
8-Jun	4	0.17	1.29	2.14	0	<sup>e</sup> 0.00	0.00	35.45	221	532	3,130	8-Jun
9-Jun	5	0.21	1.50	2.70	0	0.00	0.00	41.77	275	807	3,972	9-Jun
10-Jun	2	0.08	1.58	3.21	0	0.00	0.00	45.70	447	1,254	5,588	10-Jun
11-Jun	4	0.17	1.75	3.77	1	1.15	1.15	59.21	378	1,632	6,882	11-Jun
12-Jun	4	0.17	1.92	4.49	0	0.00	1.15	70.60	274	1,906	8,038	12-Jun
13-Jun	11	0.46	2.38	5.27	2	<sup>de</sup> 2.37	3.52	83.04	258	2,164	8,302	13-Jun
14-Jun	3	0.13	2.50	6.04	0	<sup>e</sup> 0.00	3.52	96.07	702	2,866	9,572	14-Jun
15-Jun	4	0.17	2.67	6.80	0	0.00	3.52	108.46	868	3,734	11,065	15-Jun
16-Jun	0	0.00	2.67	7.72	3	2.86	6.38	118.16	631	4,365	12,764	16-Jun
17-Jun	0	0.00	2.67	8.70	1	<sup>e</sup> 1.07	7.44	138.48	725	5,090	15,303	17-Jun
18-Jun	1	0.04	2.71	9.77	0	<sup>e</sup> 0.00	7.44	159.33	1,195	6,285	20,147	18-Jun
19-Jun	0	0.00	2.71	10.74	0	<sup>e</sup> 0.00	7.44	176.82	630	6,915	24,677	19-Jun
20-Jun	4	0.17	2.88	11.64	0	<sup>e</sup> 0.00	7.44	189.58	583	7,498	30,316	20-Jun
21-Jun	6	0.25	3.13	12.66	1	<sup>e</sup> 1.06	8.50	203.67	785	8,283	36,759	21-Jun
22-Jun	21	0.88	4.00	13.70	6	<sup>b</sup> 6.37	14.87	216.85	751	9,034	42,536	22-Jun
23-Jun	8	0.33	4.33	14.80	12	11.47	26.35	240.56	1,113	10,147	48,861	23-Jun
24-Jun	4	0.17	4.50	15.85	4	3.81	30.16	254.51	1,753	11,900	54,217	24-Jun
25-Jun	4	0.17	4.67	16.79	1	0.97	31.12	278.40	2,865	14,765	61,113	25-Jun
26-Jun	1	<sup>b</sup> 0.08	4.75	17.80	0	<sup>de</sup> 0.00	31.12	296.09	4,351	19,116	70,760	26-Jun
27-Jun	17	0.71	5.46	18.74	6	6.40	37.52	311.48	1,597	20,713	77,718	27-Jun
28-Jun	1	0.04	5.50	19.60	3	<sup>e</sup> 2.82	40.35	319.05	3,451	24,164	86,141	28-Jun
29-Jun	0	0.00	5.50	20.34	0	0.00	40.35	328.38	2,055	26,219	94,453	29-Jun
30-Jun	1	0.04	5.54	20.99	1	0.96	41.30	336.01	2,442	28,661	104,731	30-Jun
1-Jul	1	0.04	5.59	21.62	0	0.00	41.30	343.72	1,781	30,442	111,125	1-Jul
2-Jul	3	0.13	5.71	22.27	0	0.00	41.30	349.91	1,727	32,169	118,069	2-Jul
3-Jul	1	0.04	5.75	22.75	3	2.89	44.20	355.81	1,286	33,455	123,764	3-Jul
4-Jul	2	0.08	5.84	23.11	1	0.97	45.17	359.11	1,644	35,099	128,415	4-Jul
5-Jul	3	0.13	5.96	23.41	0	0.00	45.17	360.35	669	35,768	132,339	5-Jul
6-Jul	4	0.17	6.13	23.69	0	0.00	45.17	361.92	1,490	37,258	135,569	6-Jul
7-Jul	0	0.00	6.13	23.94	0	0.00	45.17	362.53	927	38,185	137,703	7-Jul
8-Jul	0	0.00	6.13	24.16	1	0.93	46.10	364.80	409	38,594	139,847	8-Jul
9-Jul	1	0.04	6.17	24.33	1	0.96	47.06	365.49	611	39,205	142,004	9-Jul
10-Jul	0	0.00	6.17	24.46	0	0.00	47.06	366.01	963	40,168	143,856	10-Jul
11-Jul	0	0.00	6.17	24.57	0	0.00	47.06	366.85	542	40,710	144,770	11-Jul
12-Jul	1	<sup>i</sup> 0.04	6.21	24.67	0	0.00	47.06	367.46	465	41,175	145,820	12-Jul
13-Jul					0	<sup>d</sup> 0.00	47.06	367.56	97	41,272	146,526	13-Jul
14-Jul					0	<sup>d</sup> 0.00	47.06	367.56	652	41,924	147,619	14-Jul
15-Jul					0	<sup>i</sup> 0.00	47.06	367.76	783	42,707	148,559	15-Jul
16-Jul									30	42,737	148,961	16-Jul
17-Jul									203	42,940	149,457	17-Jul
18-Jul									-	-	149,732	18-Jul
19-Jul									-	-	150,039	19-Jul
20-Jul									-	-	150,340	20-Jul
21-Jul									-	-	150,708	21-Jul
22-Jul									-	-	151,086	22-Jul
23-Jul									-	-	151,349	23-Jul
24-Jul									-	-	151,435	24-Jul
25-Jul									-	-	151,538	25-Jul
26-Jul									-	-	151,674	26-Jul
27-Jul									-	-	151,836	27-Jul
28-Jul									-	-	151,894	28-Jul
29-Jul									-	-	151,950	29-Jul
30-Jul									-	-	152,016	30-Jul
31-Jul									-	-	152,072	31-Jul
1-Aug									-	-	152,224	1-Aug
2-Aug									-	-	152,341	2-Aug
3-Aug									-	-	152,422	3-Aug
4-Aug									-	-	152,496	4-Aug
5-Aug									-	-	152,605	5-Aug
6-Aug									-	-	152,639	6-Aug
7-Aug									-	-	152,639	7-Aug
8-Aug									-	-	152,644	8-Aug
9-Aug									-	-	152,654	9-Aug
10-Aug									-	-	152,654	10-Aug
11-Aug									-	-	152,671	11-Aug
12-Aug									-	-	152,716	12-Aug

Acronyms

- a Historical set CPUE is not comparable to 2020
- b Does not include 2001, 2004, 2007-2009, or 2020.
- c Does not include 1998-1999, 2001, or 2009.
- d AM drift(s) were cancelled
- e PM drift(s) were cancelled
- f All drift(s) were cancelled
- g Historical average cumulative counts based on late run timing
- h PM set was cancelled
- i Last day of operation
- ADF&G - Alaska Department of Fish and Game
- DFO - Department of Fisheries and Oceans Canada
- MEI - Meta Environmental Incorporated
- TCC - Tanana Chiefs Conference
- USFWS - United States Fish and Wildlife Service
- YGG - Yuvukut Gwich'in Government
- YDFDA - Yukon Delta Fisheries Development Association
- YE - Yukon Energy
- BSFA - Bering Sea Fisherman's Association
- KDPN - Kwanlin Dün First Nation

**2022 Daily and Cumulative CHINOOK salmon test fishery CPUE, and escapements**  
**Preliminary project information, subject to change**

Date	Chena River Tower - ADF&G Escapement Goal 2,800 to 5,700 (BEG)			Salcha River Tower - ADF&G Escapement Goal 3,300 to 6,500 (BEG)			Eagle Sonar - ADF&G Border Escapement Goal 42,500 to 55,000 (IMEG) + Canadian TAC			Gisasa Weir - USFWS			Upper Porcupine Sonar - DFO/VGG			Klondike Sonar - TH			Date
	Daily Counts	Cumulative Counts	Average Cumulative Counts	Daily Counts	Cumulative Counts	Average Cumulative Counts	Daily Counts	Cumulative Counts	Average Cumulative Counts	Daily Counts	Cumulative Counts	Average Cumulative Counts	Daily Counts	Cumulative Counts	Average Cumulative Counts	Daily Counts	Cumulative Counts	Average Cumulative Counts	
20-Jun																			20-Jun
21-Jun																			21-Jun
22-Jun	-	-	0																22-Jun
23-Jun	-	-	0																23-Jun
24-Jun	-	-	0	-	-	0													24-Jun
25-Jun	-	-	6	-	-	3													25-Jun
26-Jun	-	-	5	-	-	11													26-Jun
27-Jun	-	-	15	-	-	14													27-Jun
28-Jun	-	-	27	-	-	21	-	-	95										28-Jun
29-Jun	-	-	38	-	-	29	0	0	343	-	-	28	-	-	132				29-Jun
30-Jun	-	-	45	-	-	35	0	0	453	1	1	37	0	0	149				30-Jun
1-Jul	-	-	66	-	-	58	11	11	382	0	1	55	0	0	149	-	-	0	1-Jul
2-Jul	0	0	86	0	0	110	11	22	606	0	1	75	2	2	175	-	-	0	2-Jul
3-Jul	0	0	126	0	0	153	17	39	690	0	1	99	0	2	180	-	-	0	3-Jul
4-Jul	0	0	154	3	3	175	12	51	789	2	3	126	3	5	218	0	0	0	4-Jul
5-Jul	0	0	217	0	3	191	23	74	990	2	5	158	0	5	249	0	0	10	5-Jul
6-Jul	3	3	334	0	3	225	55	129	1,141	3	8	215	16	21	286	2	2	9	6-Jul
7-Jul	19	22	463	0	3	294	42	171	1,437	12	20	289	4	25	321	2	4	14	7-Jul
8-Jul	24	46	549	0	3	401	58	229	1,805	12	32	358	6	31	361	4	8	21	8-Jul
9-Jul	6	52	654	9	12	545	87	316	2,353	8	40	457	14	45	412	9	17	32	9-Jul
10-Jul	3	55	767	0	<sup>d</sup> 12	725	120	436	2,988	15	55	566	6	51	454	4	21	53	10-Jul
11-Jul	6	61	938	0	<sup>d</sup> 12	989	150	586	3,762	42	97	677	18	69	502	2	23	82	11-Jul
12-Jul	21	82	1,223	0	<sup>d</sup> 12	1,304	150	736	4,509	23	120	783	32	101	549	10	33	122	12-Jul
13-Jul	15	97	1,559	0	<sup>d</sup> 12	1,729	177	913	5,691	19	139	937	34	135	610	7	40	165	13-Jul
14-Jul	9	106	1,937	0	<sup>d</sup> 12	2,170	167	1,080	7,075	29	168	1,047	40	175	696	3	43	213	14-Jul
15-Jul	15	121	2,295	0	<sup>d</sup> 12	2,588	196	1,276	8,673	16	184	1,154	32	207	778	8	51	277	15-Jul
16-Jul	3	124	2,665	0	<sup>d</sup> 12	2,984	200	1,476	10,548	23	207	1,257	28	235	884	10	61	337	16-Jul
17-Jul	15	139	2,984	0	<sup>d</sup> 12	3,192	218	1,694	12,557	30	237	1,346	-	-	978	-	-	403	17-Jul
18-Jul	-	-	3,324	-	-	3,704	-	-	14,752	-	-	1,462	-	-	1,066	-	-	509	18-Jul
19-Jul	-	-	3,618	-	-	4,201	-	-	17,012	-	-	1,528	-	-	1,186	-	-	632	19-Jul
20-Jul	-	-	3,964	-	-	4,589	-	-	19,298	-	-	1,631	-	-	1,331	-	-	750	20-Jul
21-Jul	-	-	4,218	-	-	5,003	-	-	21,623	-	-	1,706	-	-	1,470	-	-	864	21-Jul
22-Jul	-	-	4,478	-	-	5,477	-	-	24,177	-	-	1,775	-	-	1,614	-	-	973	22-Jul
23-Jul	-	-	4,723	-	-	5,893	-	-	26,714	-	-	1,815	-	-	1,766	-	-	1,071	23-Jul
24-Jul	-	-	4,948	-	-	6,263	-	-	28,997	-	-	1,864	-	-	1,909	-	-	1,171	24-Jul
25-Jul	-	-	5,154	-	-	6,618	-	-	31,231	-	-	1,913	-	-	2,013	-	-	1,236	25-Jul
26-Jul	-	-	5,390	-	-	6,937	-	-	33,339	-	-	1,962	-	-	2,123	-	-	1,299	26-Jul
27-Jul	-	-	5,526	-	-	7,193	-	-	35,293	-	-	1,992	-	-	2,221	-	-	1,354	27-Jul
28-Jul	-	-	5,630	-	-	7,416	-	-	37,253	-	-	2,017	-	-	2,307	-	-	1,407	28-Jul
29-Jul	-	-	5,703	-	-	7,567	-	-	39,242	-	-	2,038	-	-	2,393	-	-	1,441	29-Jul
30-Jul	-	-	5,751	-	-	7,689	-	-	41,198	-	-	2,052	-	-	2,471	-	-	1,477	30-Jul
31-Jul	-	-	5,793	-	-	7,791	-	-	42,972	-	-	2,060	-	-	2,555	-	-	1,501	31-Jul
1-Aug	-	-	5,830	-	-	7,873	-	-	44,531	-	-	2,065	-	-	2,627	-	-	1,520	1-Aug
2-Aug	-	-	5,849	-	-	7,949	-	-	45,926	-	-	2,068	-	-	2,687	-	-	1,535	2-Aug
3-Aug	-	-	5,864	-	-	8,000	-	-	47,170	-	-	2,071	-	-	2,737	-	-	1,551	3-Aug
4-Aug	-	-	5,877	-	-	8,038	-	-	48,264	-	-	2,072	-	-	2,790	-	-	1,566	4-Aug
5-Aug	-	-	5,890	-	-	8,070	-	-	49,233	-	-	2,073	-	-	2,847	-	-	1,580	5-Aug
6-Aug	-	-	5,900	-	-	8,088	-	-	50,055	-	-	2,074	-	-	2,908	-	-	1,593	6-Aug
7-Aug	-	-	5,905	-	-	8,101	-	-	50,763	-	-	2,075	-	-	2,971	-	-	1,601	7-Aug
8-Aug	-	-	5,912	-	-	8,117	-	-	51,346	-	-	2,075	-	-	3,033	-	-	1,612	8-Aug
9-Aug	-	-	5,913	-	-	8,128	-	-	51,833	-	-		-	-	3,085	-	-	1,622	9-Aug
10-Aug	-	-	5,914	-	-	8,138	-	-	52,237	-	-		-	-	3,139	-	-	1,629	10-Aug
11-Aug	-	-	5,916	-	-	8,144	-	-	52,575	-	-		-	-	3,200	-	-	1,636	11-Aug
12-Aug	-	-	5,917	-	-	8,151	-	-	52,870	-	-		-	-	3,250	-	-	1,646	12-Aug
13-Aug				-	-	8,154	-	-	53,115	-	-		-	-	3,278	-	-	1,653	13-Aug
14-Aug				-	-	8,157	-	-	53,328	-	-		-	-	3,307	-	-	1,659	14-Aug
15-Aug				-	-	8,161	-	-	53,493	-	-		-	-		-	-	1,664	15-Aug
16-Aug				-	-	8,161	-	-	53,632	-	-		-	-		-	-	1,670	16-Aug
17-Aug				-	-		-	-	53,740	-	-		-	-		-	-	1,674	17-Aug
18-Aug				-	-		-	-	53,817	-	-		-	-		-	-	1,678	18-Aug

a Historical set CPUE is not comparable to 2020  
b Does not include 2001, 2004, 2007-2009, or 2020.  
c Does not include 1998-1999, 2001, or 2009.  
d Visual counts and sonar are nonoperational due to high water

ADF&G - Alaska Department of Fish and Game  
DFO - Department of Fisheries and Oceans Canada  
MEI - Metla Environmental Incorporated  
TCC - Tanana Chiefs Conference  
USFWS - United States Fish and Wildlife Service  
VGG - Vuntut Gwitch'in Government  
YDFDA - Yukon Delta Fisheries Development Association  
YE - Yukon Energy  
BSFA - Bering Sea Fisherman's Association  
KDFN - Kwanlin Dün First Nation

2022 Daily and Cumulative SUMMER CHUM salmon test fishery CPUE, and escapements

Preliminary project information, subject to change.

Date	Big Eddy and Middle Mouth Lower Yukon Test Fishery (Drift) - ADF&G and YDFDA			Pilot Station Sonar - ADF&G			Anvik River Sonar - ADF&G			Gisasa River Weir - USFWS		Date
	Daily Counts	Daily CPUE	Cumulative CPUE	Daily Counts	Cumulative Counts	Median Cumulative Counts <sup>ab</sup>	Daily Counts	Cumulative Counts	Historical Median Cumulative Counts	Daily Counts	Cumulative Counts	
23-May												23-May
24-May												24-May
25-May												25-May
26-May												26-May
27-May												27-May
28-May												28-May
29-May												29-May
30-May												30-May
31-May												31-May
1-Jun						0						1-Jun
2-Jun	0	<sup>cd</sup> 0.00	0.00	0	0	6						2-Jun
3-Jun	0	<sup>cd</sup> 0.00	0.00	7	7	8						3-Jun
4-Jun	0	<sup>cd</sup> 0.00	0.00	0	7	137						4-Jun
5-Jun	0	<sup>de</sup> 0.00	0.00	2	9	307						5-Jun
6-Jun	0	<sup>d</sup> 0.00	0.00	8	17	335						6-Jun
7-Jun	0	<sup>d</sup> 0.00	0.00	1	18	532						7-Jun
8-Jun	0	<sup>d</sup> 0.00	0.00	0	18	3,060						8-Jun
9-Jun	0	0.00	0.00	1	19	6,637						9-Jun
10-Jun	1	1.22	1.22	13	32	10,125						10-Jun
11-Jun	0	0.00	1.22	1	33	14,324						11-Jun
12-Jun	0	0.00	1.22	282	315	15,899						12-Jun
13-Jun	2	1.88	3.09	267	582	17,604						13-Jun
14-Jun	9	<sup>d</sup> 11.93	15.03	917	1,499	27,224						14-Jun
15-Jun	3	2.74	17.77	1,141	2,640	49,101	68	68	323			15-Jun
16-Jun	40	37.80	55.56	1,018	3,658	75,822	159	227	196			16-Jun
17-Jun	1	<sup>d</sup> 0.90	56.46	1,273	4,931	97,760	159	386	408			17-Jun
18-Jun	2	<sup>d</sup> 2.47	58.93	1,362	6,293	127,874	189	575	839			18-Jun
19-Jun	0	0.00	58.93	2,153	8,446	164,956	152	727	958			19-Jun
20-Jun	0	<sup>d</sup> 0.00	58.93	1,289	9,735	189,871	116	843	1,737			20-Jun
21-Jun	0	0.00	58.93	1,355	11,090	210,981	208	1,051	1,836			21-Jun
22-Jun	138	124.98	183.91	677	11,767	234,307	116	1,167	2,713			22-Jun
23-Jun	173	149.89	333.81	334	12,101	268,189	129	1,296	3,276			23-Jun
24-Jun	22	20.39	354.19	5,564	17,665	309,594	54	1,350	5,031			24-Jun
25-Jun	4	3.66	357.86	34,473	52,138	340,747	104	1,454	12,532			25-Jun
26-Jun	0	<sup>cd</sup> 0.00	357.70	45,738	97,876	384,858	131	1,585	16,763			26-Jun
27-Jun	21	19.84	377.70	28,053	125,929	459,086	144	1,729	21,707			27-Jun
28-Jun	73	<sup>cd</sup> 68.17	445.87	16,961	142,890	517,587	209	1,938	27,899			28-Jun
29-Jun	25	23.35	469.22	14,140	157,030	607,323	160	2,098	35,839			29-Jun
30-Jun	3	2.52	471.73	21,164	178,194	734,928	438	2,536	48,449	0	0	30-Jun
1-Jul	0	0.00	471.73	24,521	202,715	839,727	548	3,084	61,403	1	1	1-Jul
2-Jul	88	79.10	550.83	17,597	220,312	934,201	96	3,180	75,778	8	9	2-Jul
3-Jul	27	25.82	576.65	7,178	227,490	1,071,117	306	3,486	94,099	20	29	3-Jul
4-Jul	2	2.08	578.73	5,791	233,281	1,155,990	684	4,170	117,829	28	57	4-Jul
5-Jul	0	0.00	578.73	18,448	251,729	1,191,045	1,583	5,753	133,440	20	77	5-Jul
6-Jul	9	10.69	589.42	17,756	269,485	1,229,756	2,255	8,008	164,230	34	111	6-Jul
7-Jul	1	1.02	590.44	10,066	279,551	1,267,283	2,223	10,231	185,290	39	150	7-Jul
8-Jul	6	5.71	596.15	8,344	287,895	1,315,546	3,829	14,060	202,756	76	226	8-Jul
9-Jul	75	71.15	667.30	5,809	293,704	1,358,253	4,844	18,904	231,480	201	427	9-Jul
10-Jul	62	60.24	727.54	9,001	302,705	1,385,649	3,919	22,823	257,156	292	719	10-Jul
11-Jul	15	14.23	741.77	12,120	314,825	1,425,214	1,966	24,789	278,765	291	1,010	11-Jul
12-Jul	6	5.74	747.51	17,996	332,821	1,479,202	1,582	26,371	292,454	162	1,172	12-Jul
13-Jul	36	34.84	782.35	24,855	357,676	1,515,161	972	27,343	306,471	128	1,300	13-Jul
14-Jul	4	5.55	787.90	15,390	373,066	1,543,887	1,134	28,477	325,540	233	1,533	14-Jul
15-Jul	1	<sup>f</sup> 0.96	788.86	11,969	385,035	1,578,414	1,682	30,159	348,377	108	1,641	15-Jul
16-Jul				22,938	407,973	1,600,253	1,722	31,881	365,726	98	1,739	16-Jul
17-Jul				15,910	423,883	1,611,597	2,420	34,301	376,485	124	1,863	17-Jul
18-Jul				-	-	1,626,239	-	-	381,545	-	-	18-Jul
19-Jul							-	-	400,157	-	-	19-Jul
20-Jul							-	-	413,651	-	-	20-Jul
21-Jul							-	-	424,710	-	-	21-Jul
22-Jul							-	-	430,062	-	-	22-Jul
23-Jul							-	-	435,065	-	-	23-Jul
24-Jul							-	-	444,075	-	-	24-Jul
25-Jul							-	-	451,542	-	-	25-Jul
26-Jul							-	-	455,876	-	-	26-Jul
27-Jul							-	-	455,876	-	-	27-Jul
28-Jul							-	-	455,876	-	-	28-Jul
29-Jul							-	-	455,876	-	-	29-Jul
30-Jul												30-Jul
31-Jul												31-Jul
1-Aug												1-Aug

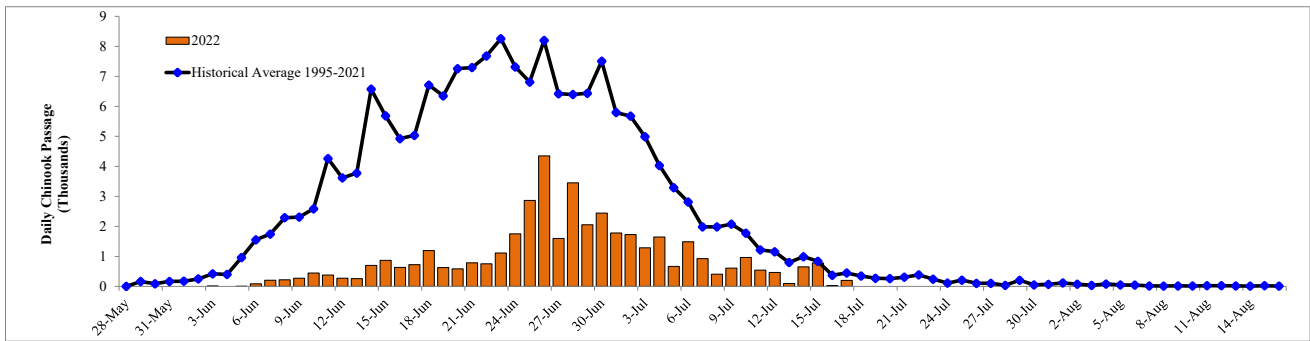
a Includes 2003, 2005, 2008, and 2019-2021  
 b Historical median based on late run timing  
 c AM drift(s) were cancelled  
 d PM drift(s) were cancelled  
 e All drift(s) were cancelled  
 f Last day of operation

ADF&G - Alaska Department of Fish and Game  
 DFO - Department of Fisheries and Oceans Canada  
 MEI - Metla Environmental Incorporated  
 TCC - Tanana Chiefs Conference  
 USFWS - United States Fish and Wildlife Service  
 VGG - Vuntut Gwitch'in Government  
 YDFDA - Yukon Delta Fisheries Development Association

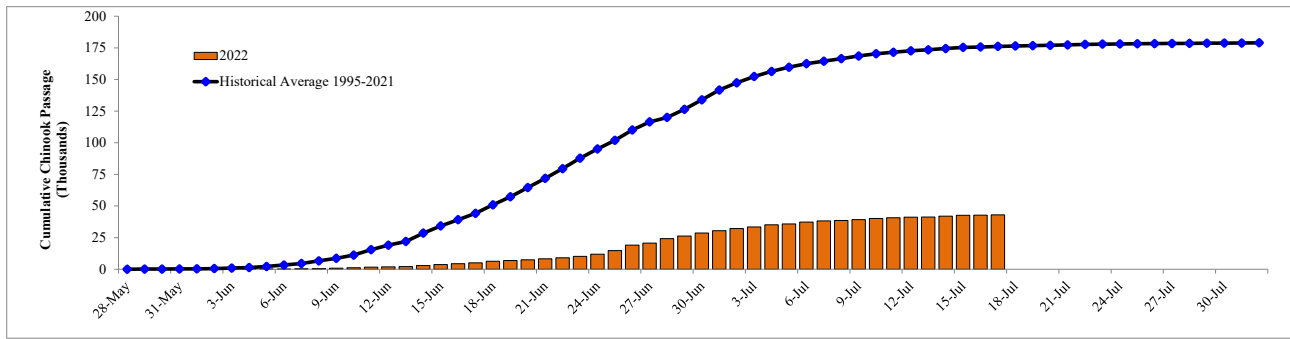
2022 Daily and Cumulative SUMMER CHUM salmon test fishery CPUE, and escapements							
Preliminary project information, subject to change.							
Chena River Tower - ADF&G				Salcha River Tower - ADF&G			
Date	Daily Counts	Cumulative Counts	Historical Median Cumulative Counts	Daily Counts	Cumulative Counts	Historical Median Cumulative Counts	Date
23-Jun							23-Jun
24-Jun	-	-	0	-	-	0	24-Jun
25-Jun	-	-	0	-	-	0	25-Jun
26-Jun	-	-	0	-	-	0	26-Jun
27-Jun	-	-	0	-	-	0	27-Jun
28-Jun	-	-	0	-	-	0	28-Jun
29-Jun	-	-	0	-	-	0	29-Jun
30-Jun	-	-	0	-	-	0	30-Jun
1-Jul	-	-	0	-	-	0	1-Jul
2-Jul	0	0	0	0	0	0	2-Jul
3-Jul	0	0	0	0	0	0	3-Jul
4-Jul	0	0	0	0	0	0	4-Jul
5-Jul	0	0	0	0	0	0	5-Jul
6-Jul	9	9	9	0	0	0	6-Jul
7-Jul	3	12	19	0	0	0	7-Jul
8-Jul	12	24	26	0	0	3	8-Jul
9-Jul	9	33	25	0	0	5	9-Jul
10-Jul	0	33	35	0	0	0	10-Jul
11-Jul	6	39	51	0	0	23	11-Jul
12-Jul	6	45	63	0	0	35	12-Jul
13-Jul	34	79	105	0	0	64	13-Jul
14-Jul	15	94	145	0	0	80	14-Jul
15-Jul	6	100	201	0	0	140	15-Jul
16-Jul	6	106	234	0	0	252	16-Jul
17-Jul	6	112	354	0	0	344	17-Jul
18-Jul	-	-	468	-	-	533	18-Jul
19-Jul	-	-	620	-	-	738	19-Jul
20-Jul	-	-	773	-	-	1,005	20-Jul
21-Jul	-	-	942	-	-	1,372	21-Jul
22-Jul	-	-	1,282	-	-	1,554	22-Jul
23-Jul	-	-	1,594	-	-	1,854	23-Jul
24-Jul	-	-	1,891	-	-	2,018	24-Jul
25-Jul	-	-	2,428	-	-	2,586	25-Jul
26-Jul	-	-	3,265	-	-	3,263	26-Jul
27-Jul	-	-	3,865	-	-	3,612	27-Jul
28-Jul	-	-	4,591	-	-	4,173	28-Jul
29-Jul	-	-	4,773	-	-	5,658	29-Jul
30-Jul	-	-	4,773	-	-	7,121	30-Jul
31-Jul	-	-	4,773	-	-	8,330	31-Jul
1-Aug	-	-	5,300	-	-	10,066	1-Aug
2-Aug	-	-	5,956	-	-	11,566	2-Aug
3-Aug	-	-	6,428	-	-	12,797	3-Aug
4-Aug	-	-	6,817	-	-	14,216	4-Aug
5-Aug	-	-	7,198	-	-	15,679	5-Aug
6-Aug	-	-	7,339	-	-	17,252	6-Aug
7-Aug	-	-	8,191	-	-	18,910	7-Aug
8-Aug	-	-	8,304	-	-	20,202	8-Aug
9-Aug	-	-	8,620	-	-	20,648	9-Aug
10-Aug			8,620	-	-	21,057	

**Acronyms**

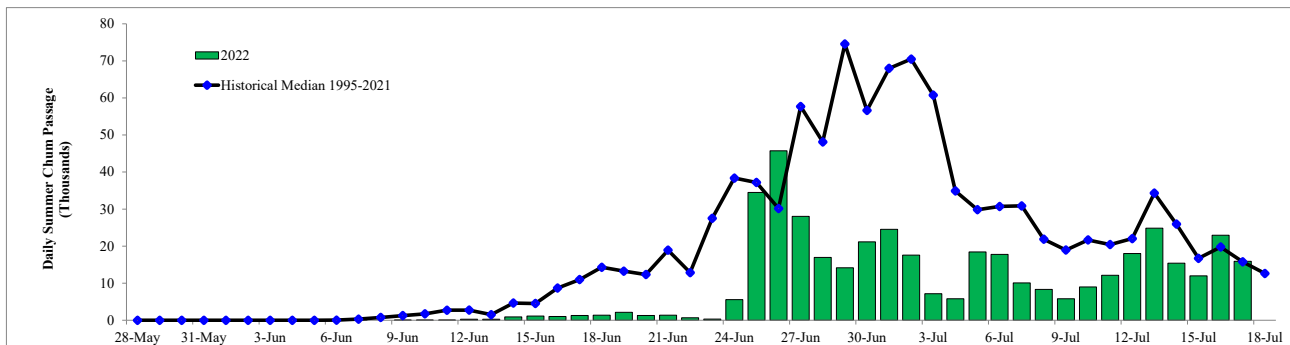
ADF&G - Alaska Department of Fish and Game  
DFO - Department of Fisheries and Oceans Canada  
MEI - Metla Environmental Incorporated  
TCC - Tanana Chiefs Conference  
USFWS - United States Fish and Wildlife Service  
VGG - Vuntut Gwitch'in Government  
YDFDA - Yukon Delta Fisheries Development Association



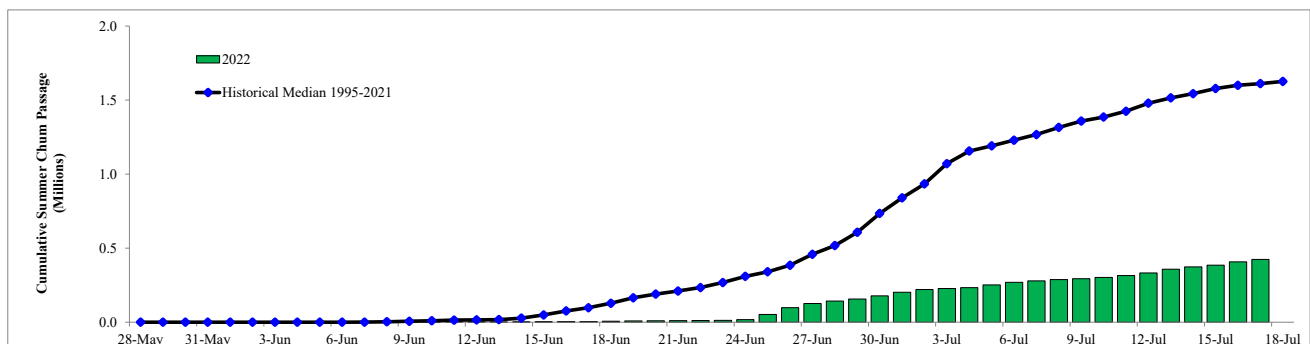
Note: Historical average does not include 1998-1999, 2001, and 2009.  
 Figure 1. Daily sonar passage counts attributed to Chinook salmon, located near the community of Pilot Station, Yukon River.



Note: Historical average does not include 1998-1999, 2001, and 2009.  
 Figure 2. Cumulative sonar passage counts attributed to Chinook salmon, located near the community of Pilot Station, Yukon River.



Note: Historical median does not include 1998, 1999, 2001, or 2009.  
 Figure 3. Daily sonar passage counts attributed to summer chum salmon, located near the community of Pilot Station, Yukon River.



Note: Historical median does not include 1998, 1999, 2001, or 2009.  
 Figure 4. Cumulative sonar passage counts attributed to summer chum salmon, located near the community of Pilot Station, Yukon River.

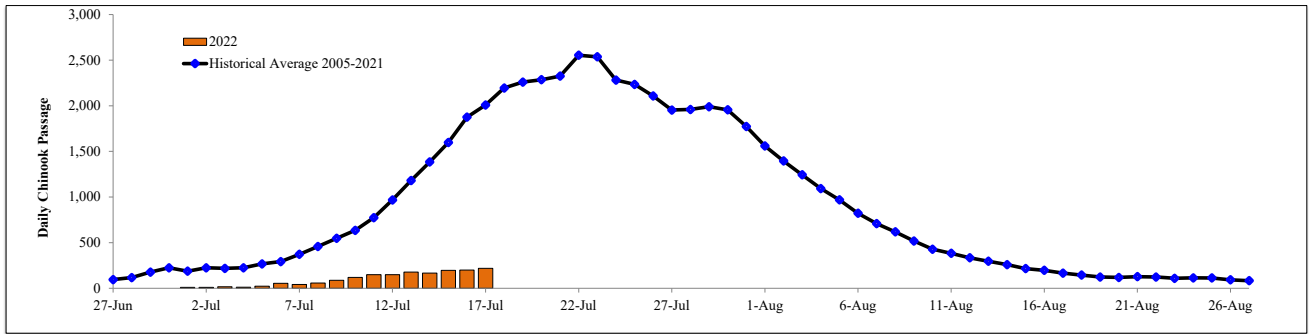


Figure 5. Historical Chinook salmon daily passage average at Eagle Sonar compared to 2022.

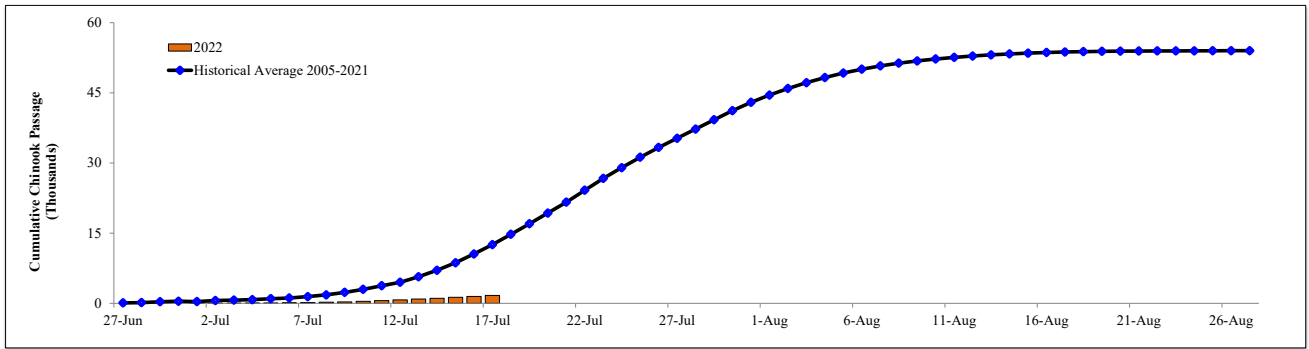
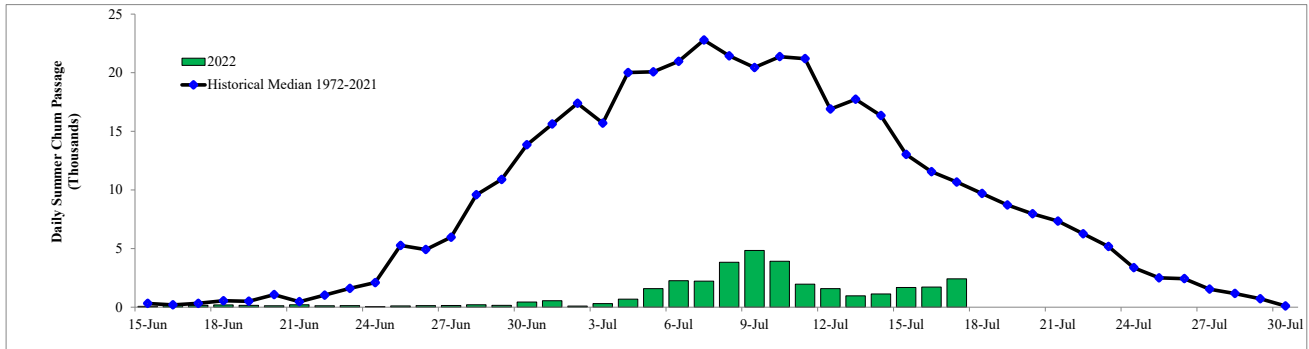
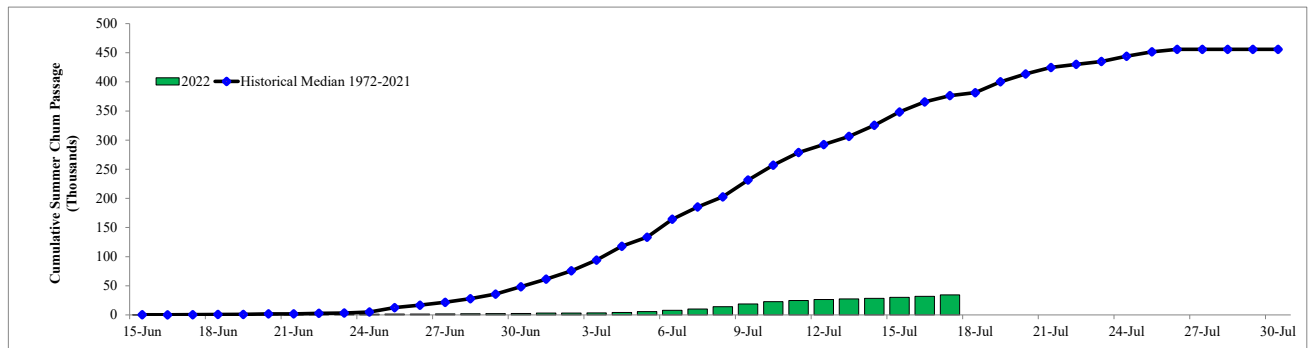


Figure 6. Historical Chinook salmon cumulative passage average at Eagle Sonar compared to 2022.



Note: Historical average does not include 2020.

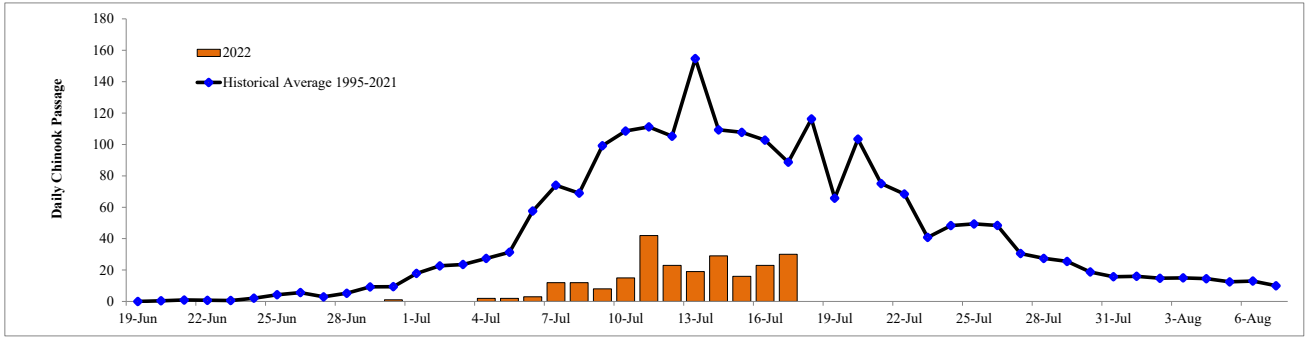
Figure 7. Daily sonar passage counts attributed to summer chum salmon, located on the Anvik River.



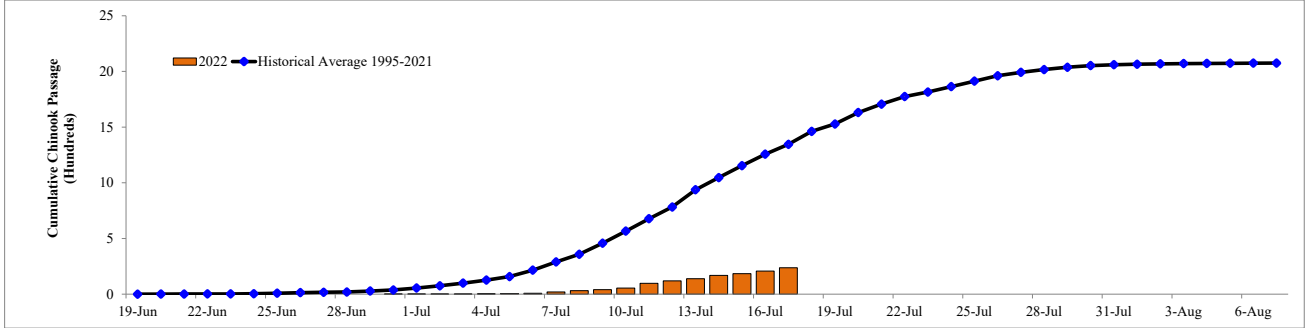
Note: Historical average does not include 2020.

Figure 8. Cumulative sonar passage counts attributed to summer chum salmon, located on the Anvik River.

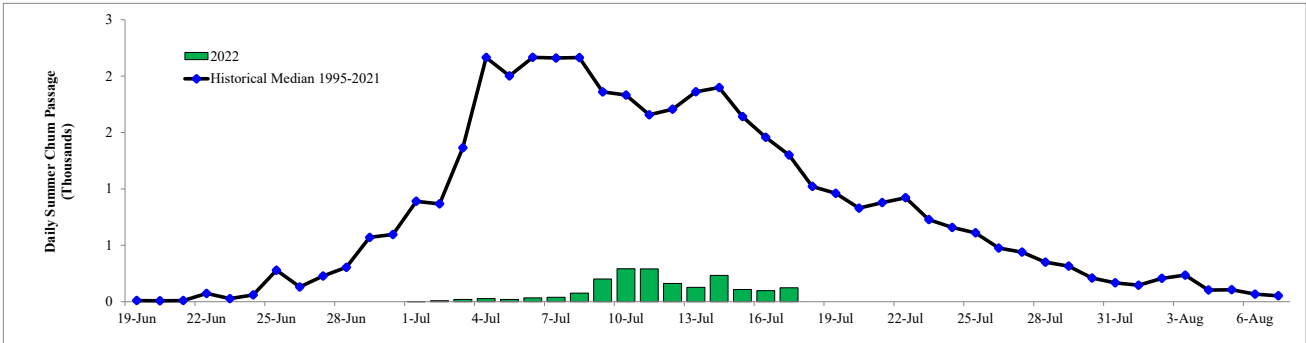




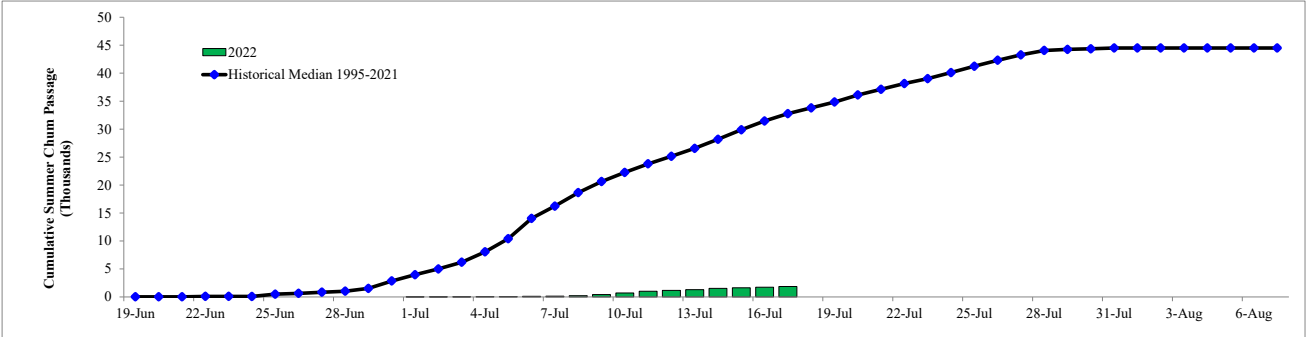
Note: Historical average does not include 2001, 2014, or 2018, or 2020.  
 Figure 9. Daily weir passage counts attributed to Chinook salmon, located on the Gisasa River.



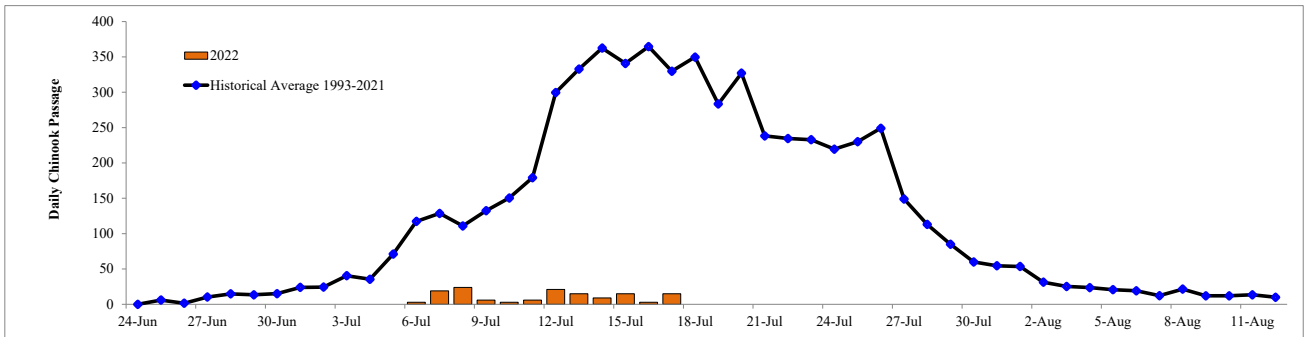
Note: Historical average does not include 2001, 2014, 2018, or 2020.  
 Figure 10. Cumulative weir passage counts attributed to Chinook salmon, located on the Gisasa River.



Note: Historical median does not include 2001, 2014, 2018 or 2020.  
 Figure 11. Daily weir passage counts attributed to summer chum salmon, located on the Gisasa River.

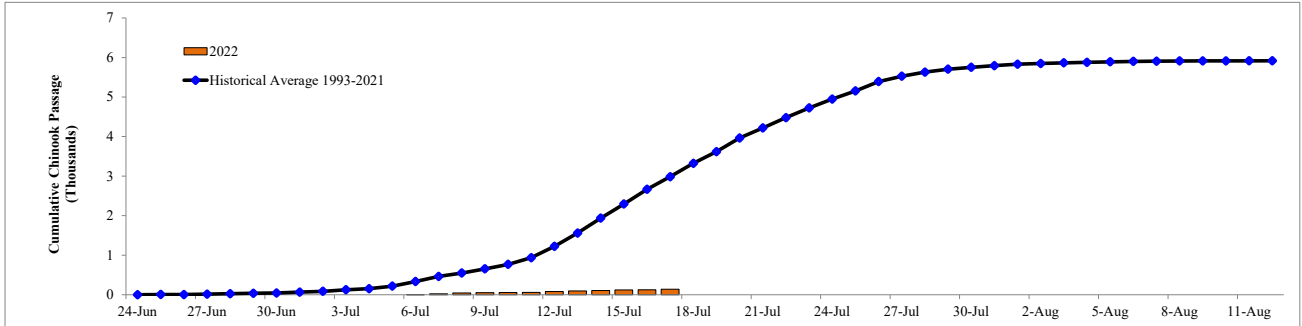


Note: Historical median does not include 2001, 2014, 2018, or 2020.  
 Figure 12. Cumulative weir passage counts attributed to summer chum salmon, located on the Gisasa River.



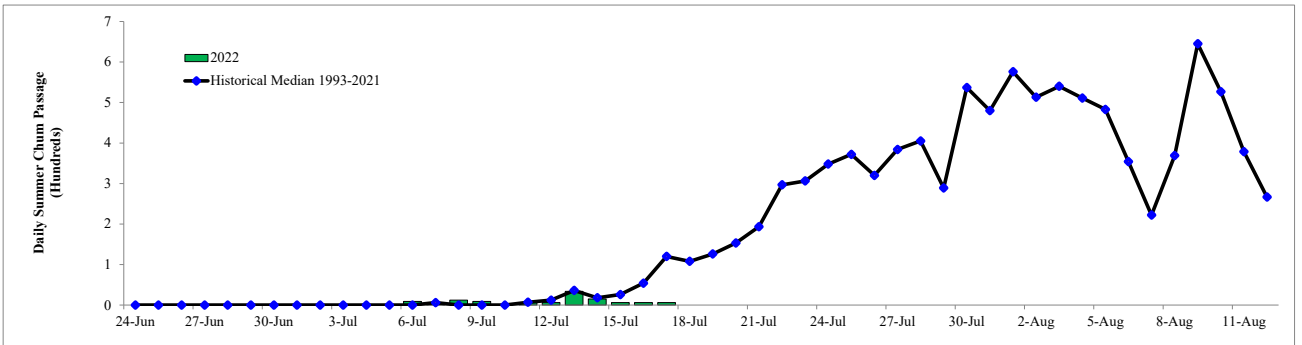
Note: Historical average does not include 1995, 1996, 2000, 2002, 2003, 2005, 2011, or 2020.

Figure 13. Estimated daily counts attributed to Chinook salmon, located on the Chena River.



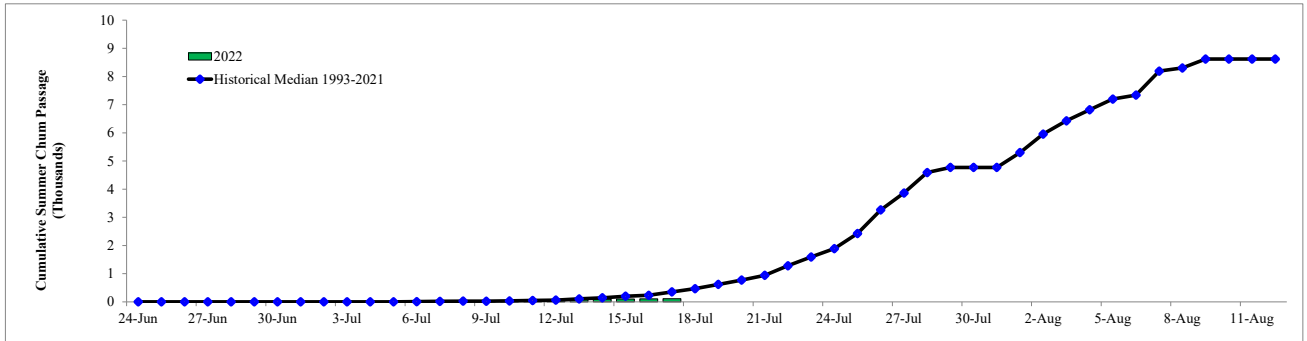
Note: Historical average does not include 1995, 1996, 2000, 2002, 2003, 2005, 2011, or 2020.

Figure 14. Estimated cumulative counts attributed to Chinook salmon, located on the Chena River.



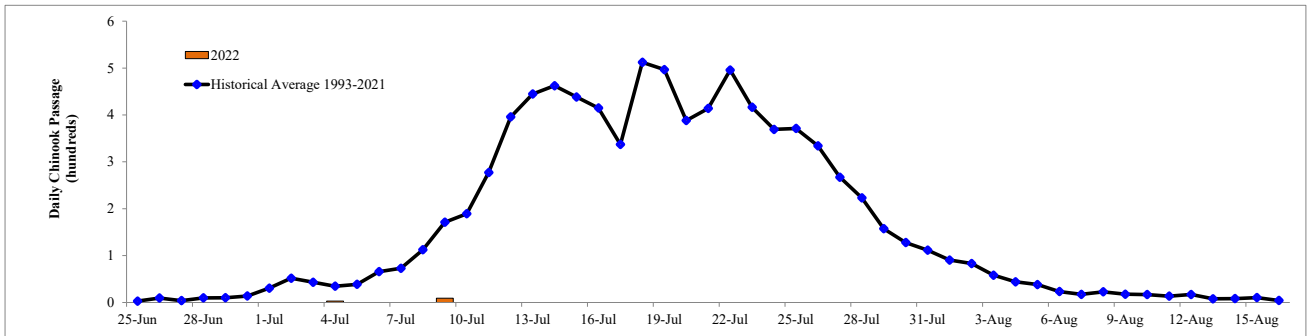
Note: Historical median does not include 1995, 1996, 2000, 2002, 2003, 2005, 2011, or 2020.

Figure 15. Estimated daily counts attributed to summer chum salmon, located on the Chena River.

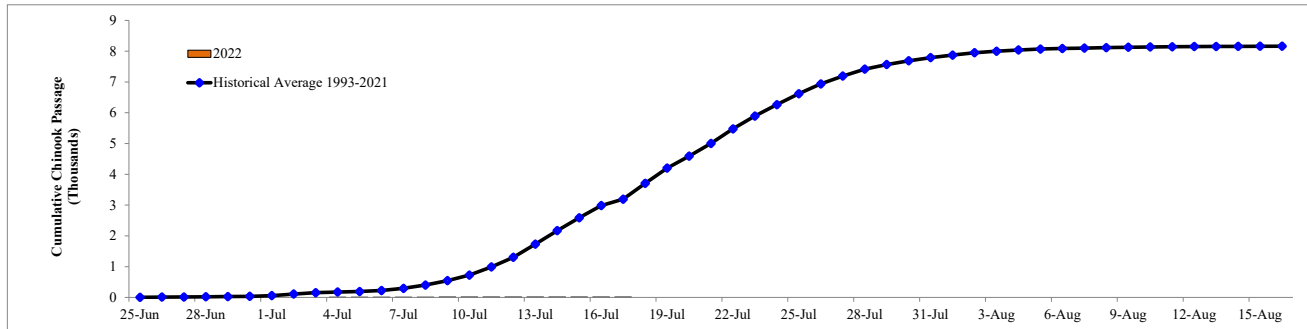


Note: Historical median does not include 1995, 1996, 2000, 2002, 2003, 2005, 2011, or 2020.

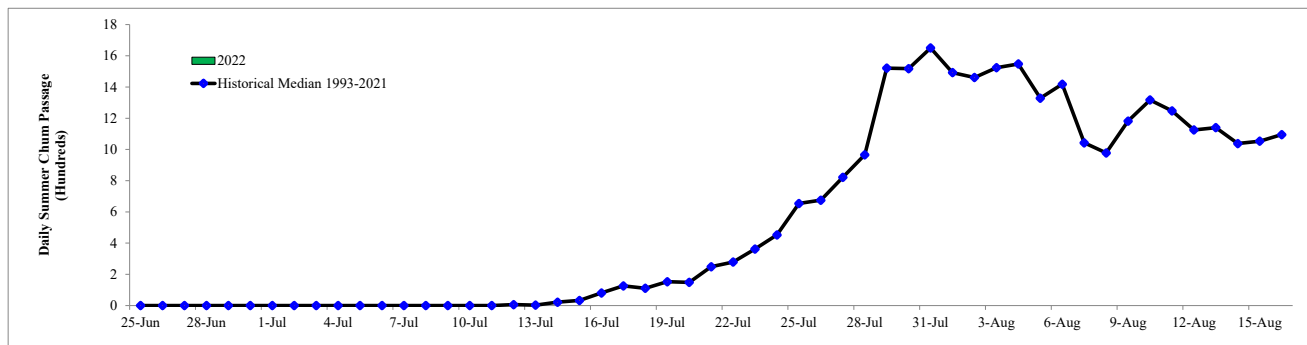
Figure 16. Estimated cumulative counts attributed to summer chum salmon, located on the Chena River.



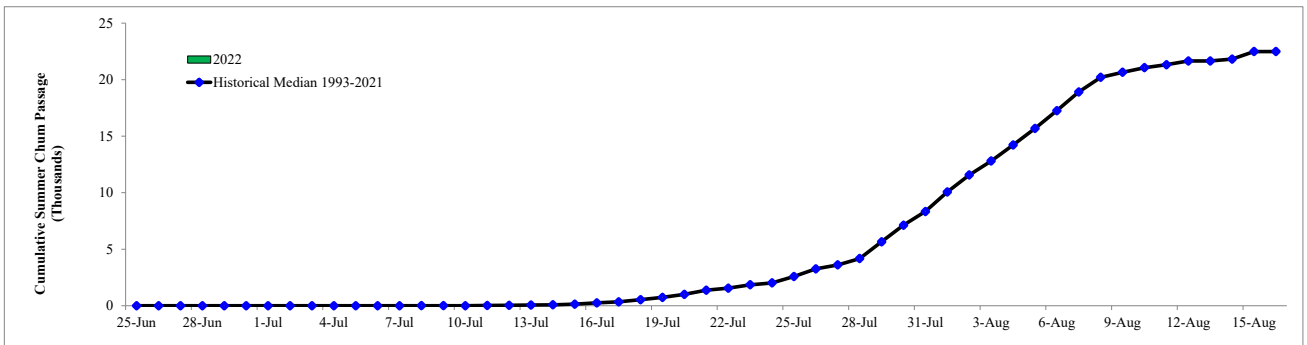
Note: Historical average does not include 1996, 2003, 2008, 2011, 2014, or 2020. See table footnotes for 2022 operational disruptions.  
 Figure 17. Estimated daily counts attributed to Chinook salmon, located on the Salcha River



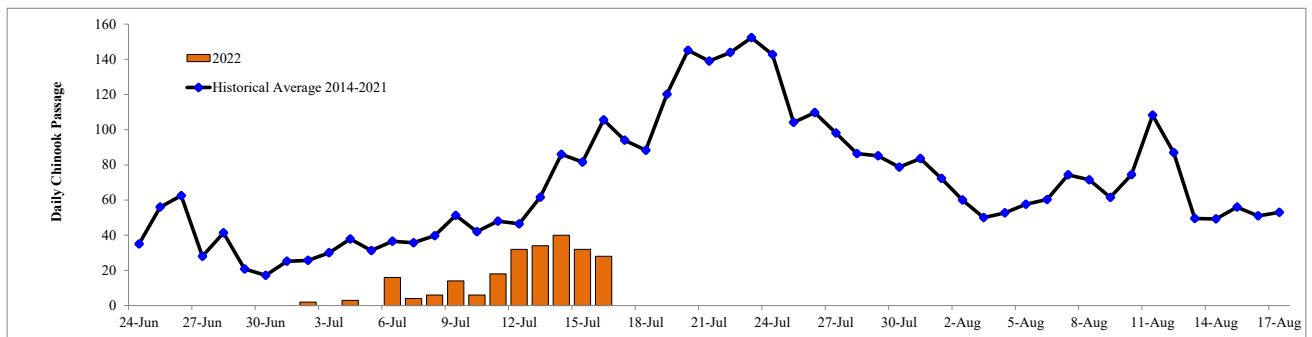
Note: Historical average does not include 1996, 2003, 2008, 2011, 2014, or 2020. See table footnotes for 2022 operational disruptions.  
 Figure 18. Estimated cumulative counts attributed to Chinook salmon, located on the Salcha River.



Note: Historical median does not include 1996, 2003, 2008, 2011, 2014, or 2020. See table footnotes for 2022 operational disruptions.  
 Figure 19. Estimated daily counts attributed to summer chum salmon, located on the Salcha River.

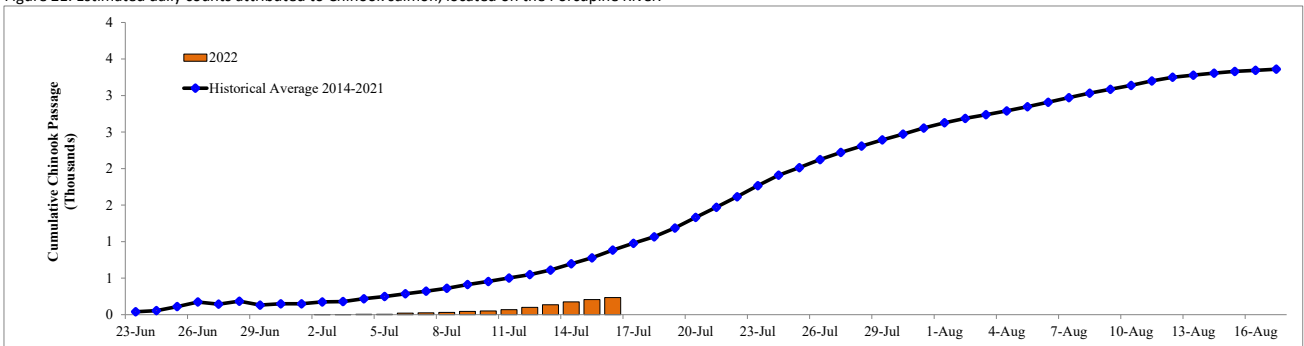


Note: Historical median does not include 1996, 2003, 2008, 2011, 2014, or 2020. See table footnotes for 2022 operational disruptions.  
 Figure 20. Estimated cumulative counts attributed to summer chum salmon, located on the Salcha River.



Note: Historical average does not include 2020.

Figure 21. Estimated daily counts attributed to Chinook salmon, located on the Porcupine River.



Note: Historical average does not include 2020.

Figure 22. Estimated cumulative counts attributed to Chinook salmon, located on the Porcupine River.

**Approximate Location of Chinook Salmon Pulses by Date of the Pulse Past Pilot Station Continuing Up the Yukon River, 2022.**

Community	RIVER MILES	DAYS BETWEEN SITES	FIRST FISH	EARLY FISH	PULSE 1	PULSE 2	PULSE 3	PULSE 4	PULSE 5
	Number of Days								
	Dates at Pilot		7-Jun	8-Jun	23-Jun	28-Jun	6-Jul		
	Pilot Station Passage			8,723	11,679	15,055			
Travels in Miles Per Day	40	40	40	40	40	40	40	40	40
Emmonak	24	2	4-Jun	5-Jun	20-Jun	25-Jun	3-Jul	-	-
<b>Y1/Y2 Border</b>	63	2	5-Jun	6-Jun	21-Jun	26-Jun	4-Jul	-	-
Mt Village	87	1	6-Jun	7-Jun	22-Jun	27-Jun	5-Jul	-	-
Pilot Station	123	0	7-Jun	8-Jun	23-Jun	28-Jun	6-Jul	-	-
Marshall	161	1	8-Jun	9-Jun	24-Jun	29-Jun	7-Jul	-	-
<b>Y2/Y3 Border</b>	193	2	9-Jun	10-Jun	25-Jun	30-Jun	8-Jul	-	-
Russian Mission	213	2	9-Jun	10-Jun	25-Jun	30-Jun	8-Jul	-	-
Holy Cross	279	4	11-Jun	12-Jun	27-Jun	2-Jul	10-Jul	-	-
<b>Y3/Y4A Lower Border</b>	300	4	11-Jun	12-Jun	27-Jun	2-Jul	10-Jul	-	-
Travels in Miles Per Day	40	40	40	40	40	40	40	40	40
Anvik	318	5	12-Jun	13-Jun	28-Jun	3-Jul	11-Jul	-	-
Grayling	336	5	12-Jun	13-Jun	28-Jun	3-Jul	11-Jul	-	-
<b>Y4A Lower/Y4A Upper Border</b>	423	8	15-Jun	16-Jun	1-Jul	6-Jul	14-Jul	-	-
Kaltag	450	8	15-Jun	16-Jun	1-Jul	6-Jul	14-Jul	-	-
Koyukuk	502	9	16-Jun	17-Jun	2-Jul	7-Jul	15-Jul	-	-
<b>Y4A Upper/Y4BC Border</b>	513	10	17-Jun	18-Jun	3-Jul	8-Jul	16-Jul	-	-
Galena	530	10	17-Jun	18-Jun	3-Jul	8-Jul	16-Jul	-	-
Ruby	581	11	18-Jun	19-Jun	4-Jul	9-Jul	17-Jul	-	-
<b>Y4BC/Y5ABC Border</b>	664	14	21-Jun	22-Jun	7-Jul	12-Jul	20-Jul	-	-
Tanana	695	14	21-Jun	22-Jun	7-Jul	12-Jul	20-Jul	-	-
Rapids	731	15	22-Jun	23-Jun	8-Jul	13-Jul	21-Jul	-	-
Rampart	763	16	23-Jun	24-Jun	9-Jul	14-Jul	22-Jul	-	-
<b>Y5ABC/Y5D Lower Border</b>	832	18	25-Jun	26-Jun	11-Jul	16-Jul	24-Jul	-	-
Stevens Village	847	18	25-Jun	26-Jun	11-Jul	16-Jul	24-Jul	-	-
Beaver	932	20	27-Jun	28-Jun	13-Jul	18-Jul	26-Jul	-	-
<b>Y5D Lower/Y5D Middle Border</b>	952	21	28-Jun	29-Jun	14-Jul	19-Jul	27-Jul	-	-
Fort Yukon	1,002	22	29-Jun	30-Jun	15-Jul	20-Jul	28-Jul	-	-
<b>Y5D Middle/Y5D Upper</b>	1,039	23	30-Jun	1-Jul	16-Jul	21-Jul	29-Jul	-	-
Circle	1,061	23	30-Jun	1-Jul	16-Jul	21-Jul	29-Jul	-	-
Canadian Border	1,224	28	5-Jul	6-Jul	21-Jul	26-Jul	3-Aug	-	-

**Approximate Location of Chinook Salmon Pulses Up the Tanana River (35 miles per day).**

Manley	765	16	23-Jun	24-Jun	9-Jul	14-Jul	22-Jul	-	-
Kantishna	793	17	24-Jun	25-Jun	10-Jul	15-Jul	23-Jul	-	-
Nenana/Toklat	860	18	25-Jun	26-Jun	11-Jul	16-Jul	24-Jul	-	-
Salcha River	965	21	28-Jun	29-Jun	14-Jul	19-Jul	27-Jul	-	-
Delta River	1,031	23	30-Jun	1-Jul	16-Jul	21-Jul	29-Jul	-	-
Bluff Cabin Slough	1,049	23	30-Jun	1-Jul	16-Jul	21-Jul	29-Jul	-	-

**Approximate Location of Chinook Salmon Pulses Up the Koyukuk River (40 miles per day).**

Koyukuk River Mouth	508	10	16-Jun	17-Jun	2-Jul	7-Jul	15-Jul	-	-
Huslia	711	15	21-Jun	22-Jun	7-Jul	12-Jul	20-Jul	-	-
Hughes	881	19	25-Jun	26-Jun	11-Jul	16-Jul	24-Jul	-	-
Allakaket/Alatna	956	21	27-Jun	28-Jun	13-Jul	18-Jul	26-Jul	-	-

**Approximate Location of Summer chum Salmon Pulses by Date of the Pulse Past Pilot Station Continuing Up the Yukon River, 2022.**

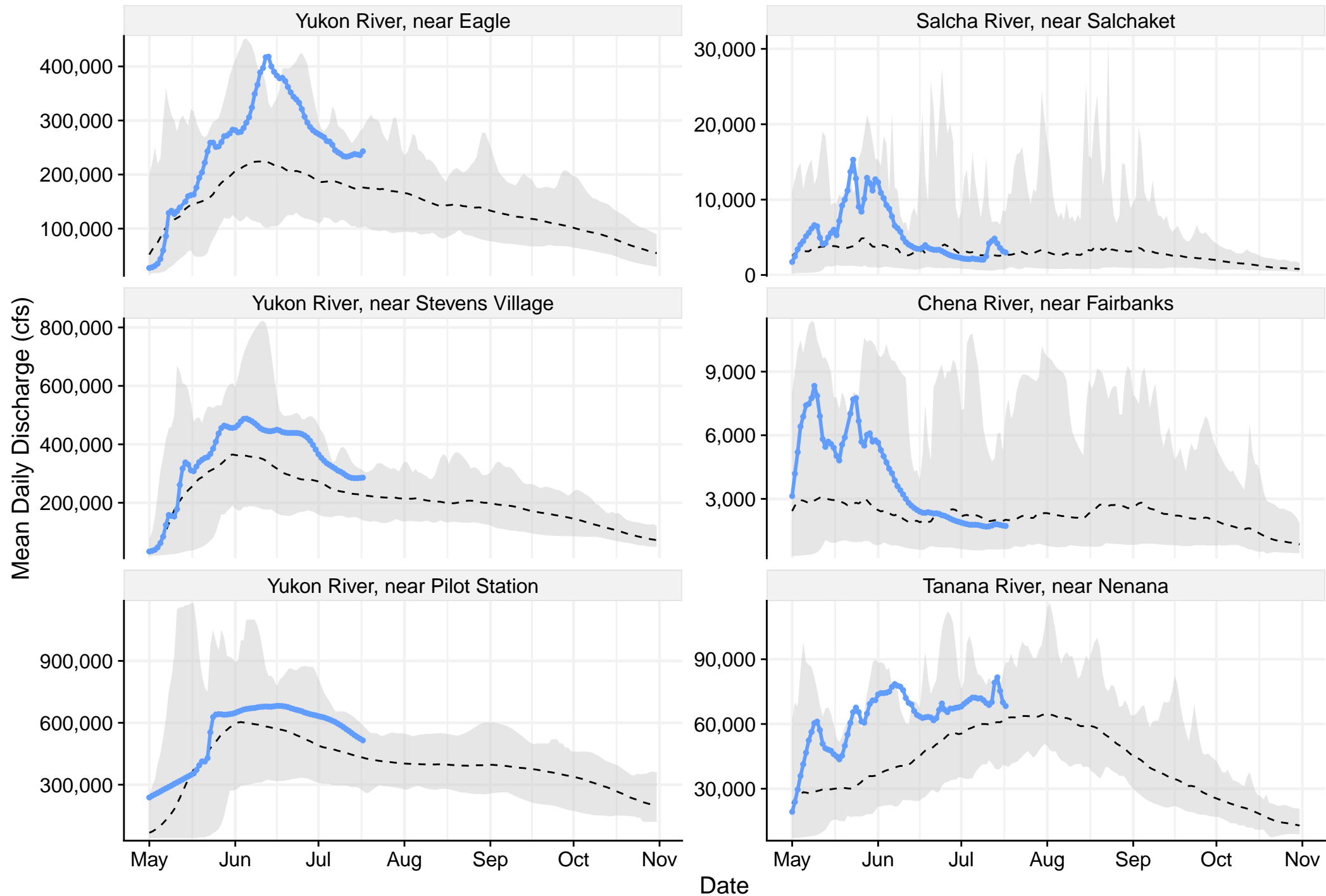
Community	RIVER MILES	DAYS BETWEEN SITES	FIRST FISH	EARLY FISH	PULSE 1	PULSE 2	PULSE 3	PULSE 4	PULSE 5
	Number of Days								
	Dates at Pilot		13-Jun	14-Jun	24-Jun	30-Jun	5-Jul	10-Jul	
	Pilot Station Passage			11,519	144,929	76,251	60,423		
	Travel in miles per day	25	25	25	25	25	25	25	25
Emmonak	24	4	9-Jun	10-Jun	20-Jun	26-Jun	1-Jul	6-Jul	-
Y1/Y2 Border	63	2	12-Jun	13-Jun	23-Jun	29-Jun	4-Jul	9-Jul	-
Mt. Village	87	1	12-Jun	13-Jun	23-Jun	29-Jun	4-Jul	9-Jul	-
Pilot Station	123	0	13-Jun	14-Jun	24-Jun	30-Jun	5-Jul	10-Jul	-
Marshall	161	2	15-Jun	16-Jun	26-Jun	2-Jul	7-Jul	12-Jul	-
Y2/Y3 Border	193	3	16-Jun	17-Jun	27-Jun	3-Jul	8-Jul	13-Jul	-
Russian Mission	213	4	17-Jun	18-Jun	28-Jun	4-Jul	9-Jul	14-Jul	-
Holy Cross	279	6	19-Jun	20-Jun	30-Jun	6-Jul	11-Jul	16-Jul	-
Y3/Y4A Lower Border	300	7	20-Jun	21-Jun	1-Jul	7-Jul	12-Jul	17-Jul	-
Anvik	318	8	21-Jun	22-Jun	2-Jul	8-Jul	13-Jul	18-Jul	-
Grayling	336	9	22-Jun	23-Jun	3-Jul	9-Jul	14-Jul	19-Jul	-
Kaltag	450	13	26-Jun	27-Jun	7-Jul	13-Jul	18-Jul	23-Jul	-
Koyukuk	502	15	28-Jun	29-Jun	9-Jul	15-Jul	20-Jul	25-Jul	-
Y4A Upper/Y4BC Border	513	16	29-Jun	30-Jun	10-Jul	16-Jul	21-Jul	26-Jul	-
Galena	530	16	29-Jun	30-Jun	10-Jul	16-Jul	21-Jul	26-Jul	-
Ruby	581	18	1-Jul	2-Jul	12-Jul	18-Jul	23-Jul	28-Jul	-
Y4BC/Y5ABC Border	664	22	5-Jul	6-Jul	16-Jul	22-Jul	27-Jul	1-Aug	-
Tanana	695	23	6-Jul	7-Jul	17-Jul	23-Jul	28-Jul	2-Aug	-
Manley	765	26	9-Jul	10-Jul	20-Jul	26-Jul	31-Jul	5-Aug	-
Kantishna	793	27	10-Jul	11-Jul	21-Jul	27-Jul	1-Aug	6-Aug	-
Nenana/Toklat	860	29	12-Jul	13-Jul	23-Jul	29-Jul	3-Aug	8-Aug	-
Salcha River	965	34	17-Jul	18-Jul	28-Jul	3-Aug	8-Aug	13-Aug	-
Delta River	1,031	36	19-Jul	20-Jul	30-Jul	5-Aug	10-Aug	15-Aug	-
Bluff Cabin Slough	1,049	37	20-Jul	21-Jul	31-Jul	6-Aug	11-Aug	16-Aug	-

Note: Early groups of Summer chum salmon may not contain a large number of Tanana-bound stocks until later in the season.

**Approximate Location of Summer Chum Salmon Pulses Up the Koyukuk River (25 miles per day).**

Koyukuk River Mouth	508	15	28-Jun	29-Jun	9-Jul	15-Jul	20-Jul	25-Jul	-
Huslia	711	24	7-Jul	8-Jul	18-Jul	24-Jul	29-Jul	3-Aug	-
Hughes	881	30	13-Jul	14-Jul	24-Jul	30-Jul	4-Aug	9-Aug	-
Allakaket/Alatna	956	33	16-Jul	17-Jul	27-Jul	2-Aug	7-Aug	12-Aug	-

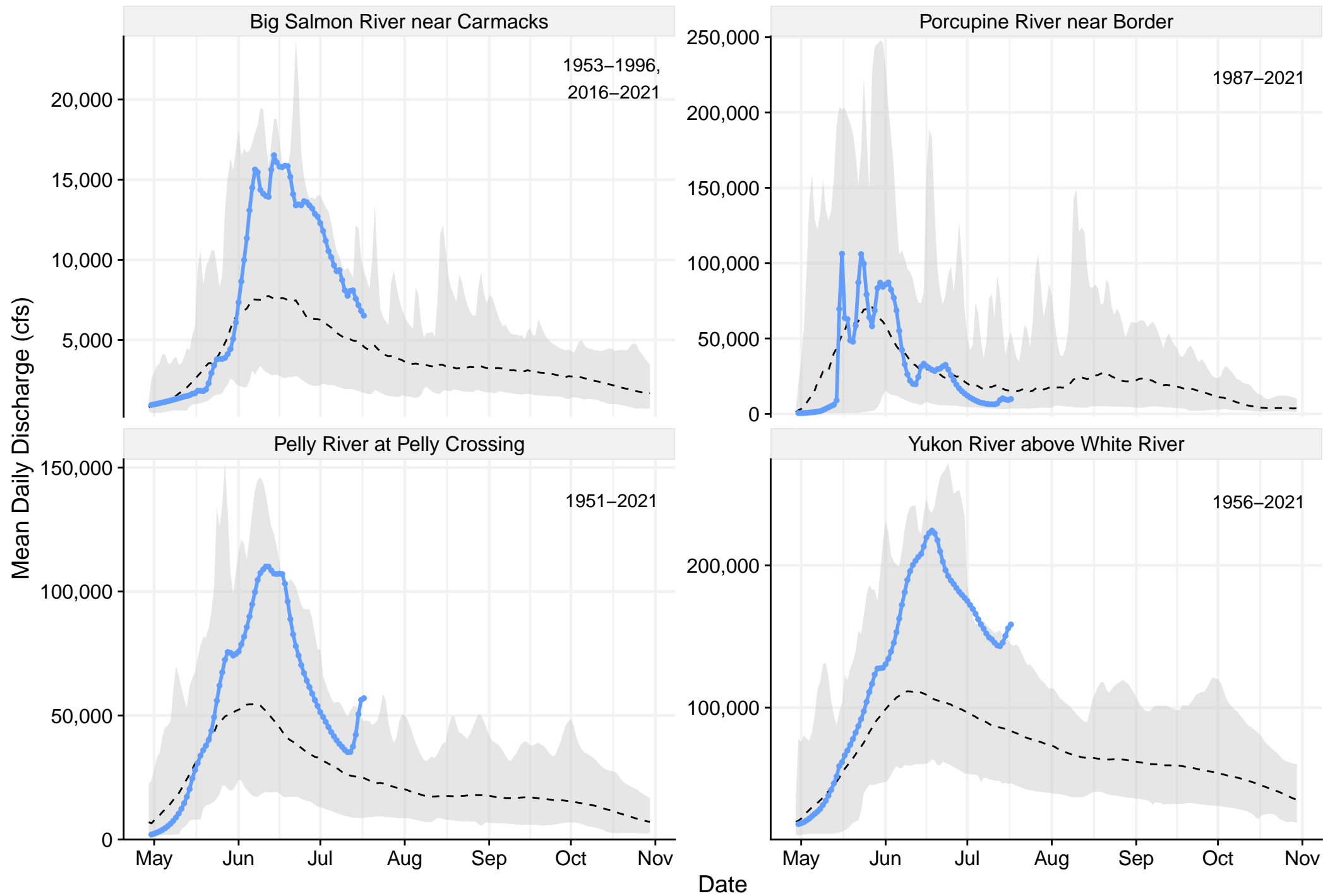
# Water Levels Update 07/18/2022



—●— 2022    1977 – 2021 Min–Max Average (dashed)

Source: <https://waterdata.usgs.gov/ak/nwis/current?>

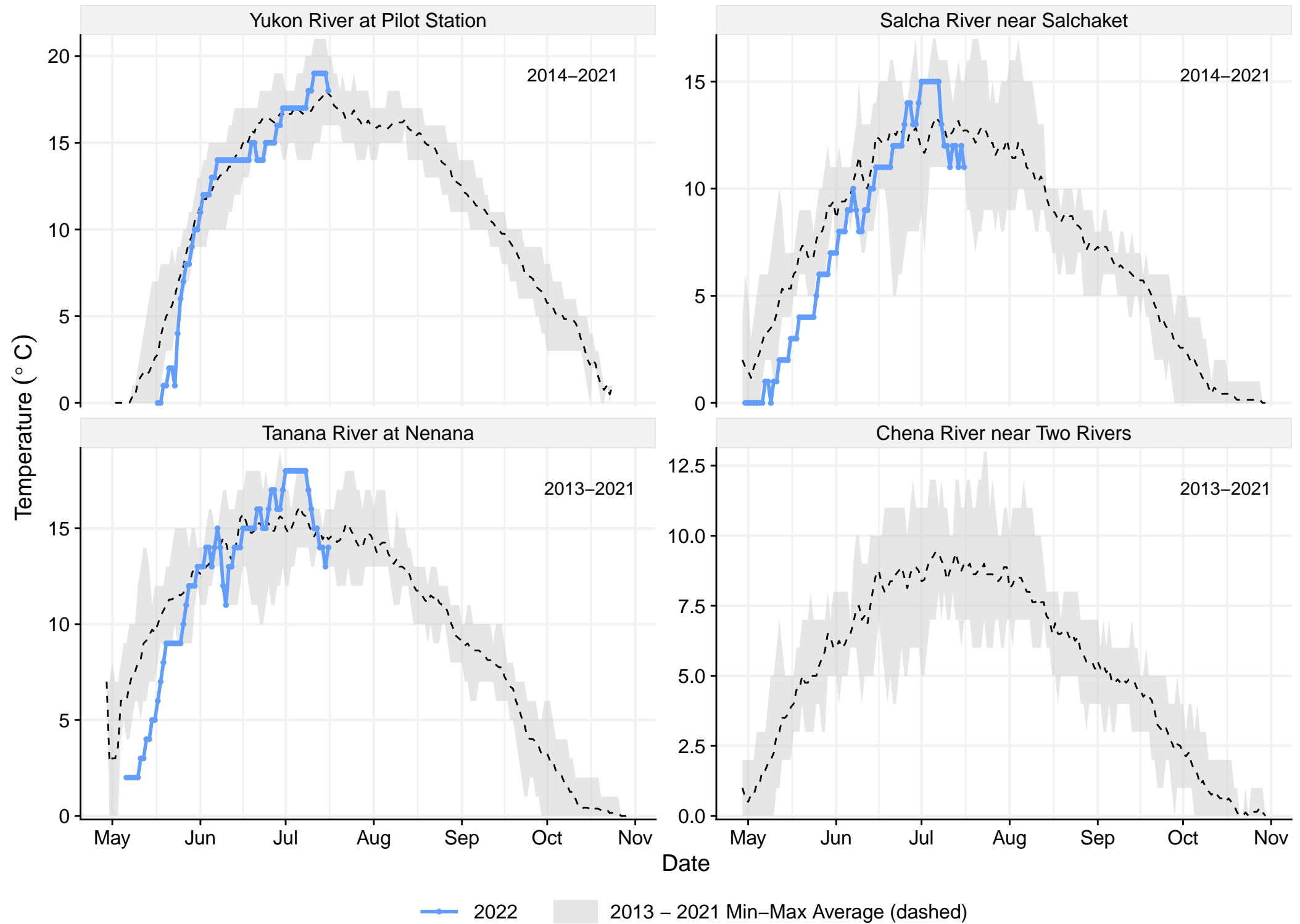
# Canada Water Levels Update 07/18/2022



—●— 2022    ■ 1951 – 2021 Min–Max Average (dashed)

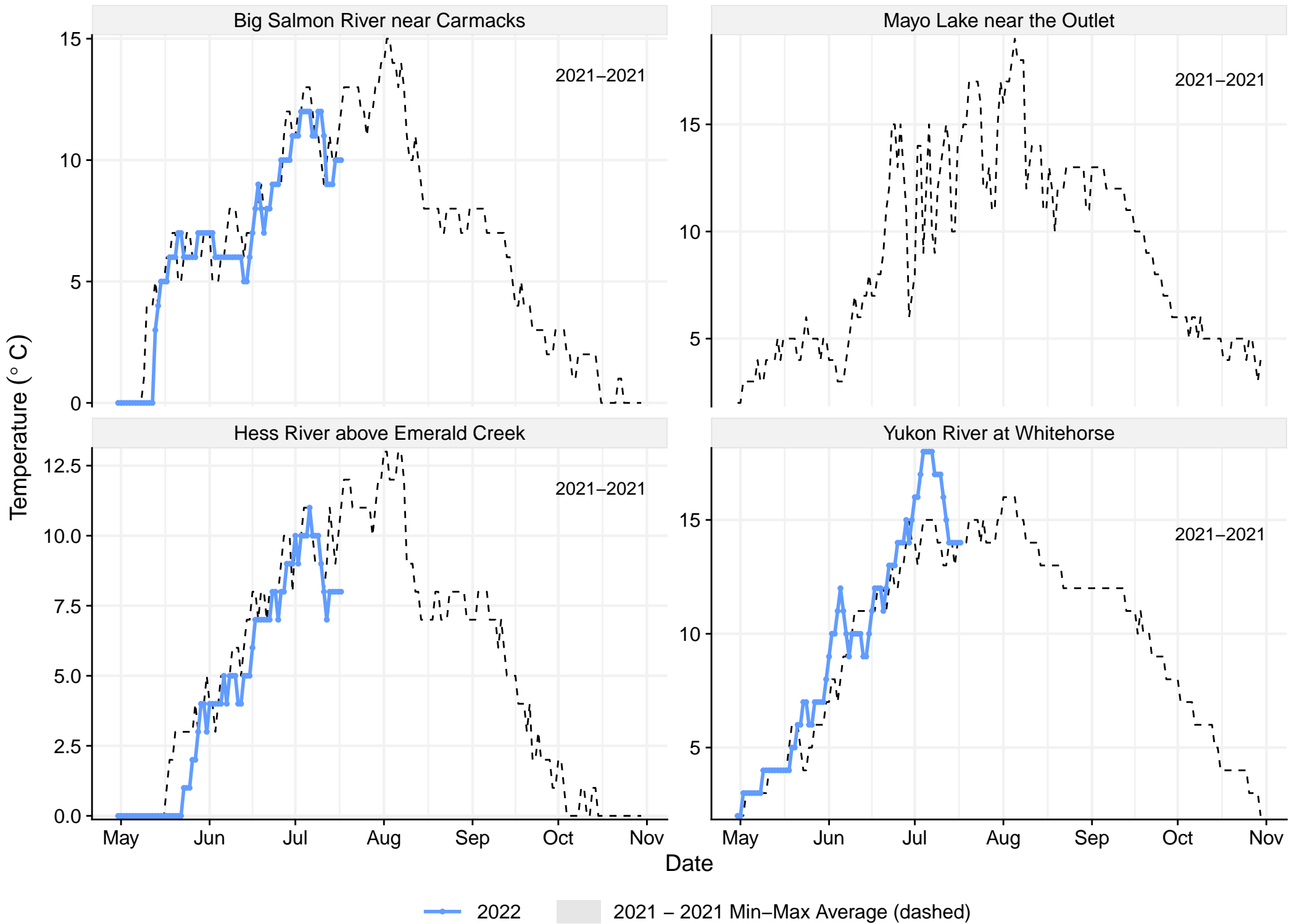


# Water Temperature Update 07/18/2022



—●— 2022    ■ 2013 – 2021 Min–Max Average (dashed)

# Canada Water Temperature Update 07/18/2022



—●— 2022      2021 – 2021 Min–Max Average (dashed)