

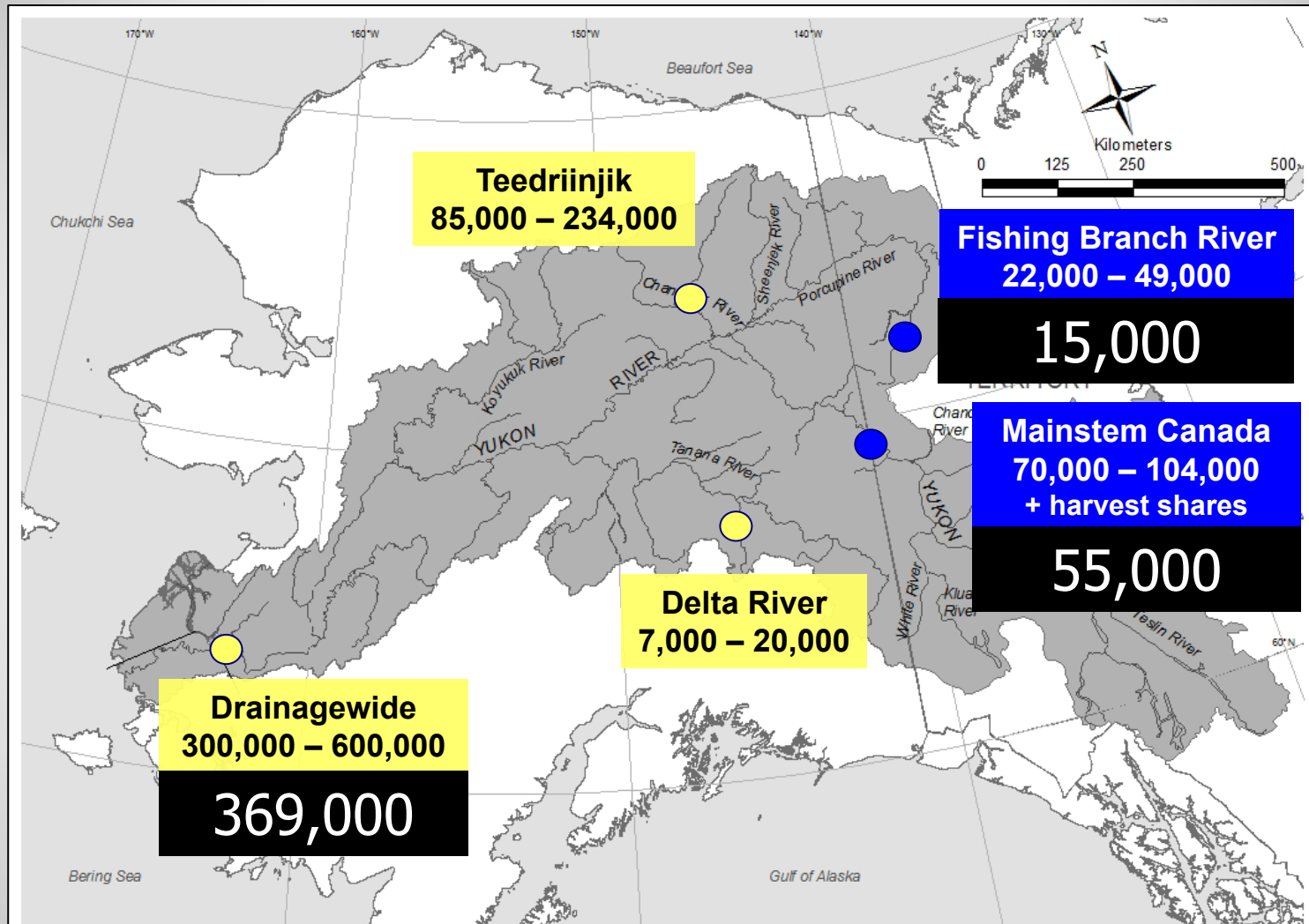
# 2024 Yukon River Fall Chum and Coho Salmon Outlook

YRDFA Board Meeting  
April 30, 2024  
Anchorage

Presentation by Christy Gleason



# 2024 Fall Chum Salmon Outlook



- Uncertainty during recent salmon decline.
- Possible to meet U.S. escapement goals, likely below Canadian treaty goals.

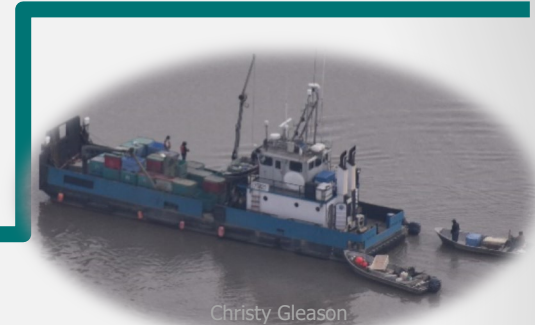
# Yukon River Drainage Fall Chum Salmon Management Plan

**2024  
Forecast**



**300,000+**

**550,000+**



**0 – 300,000**



**Subsistence\***

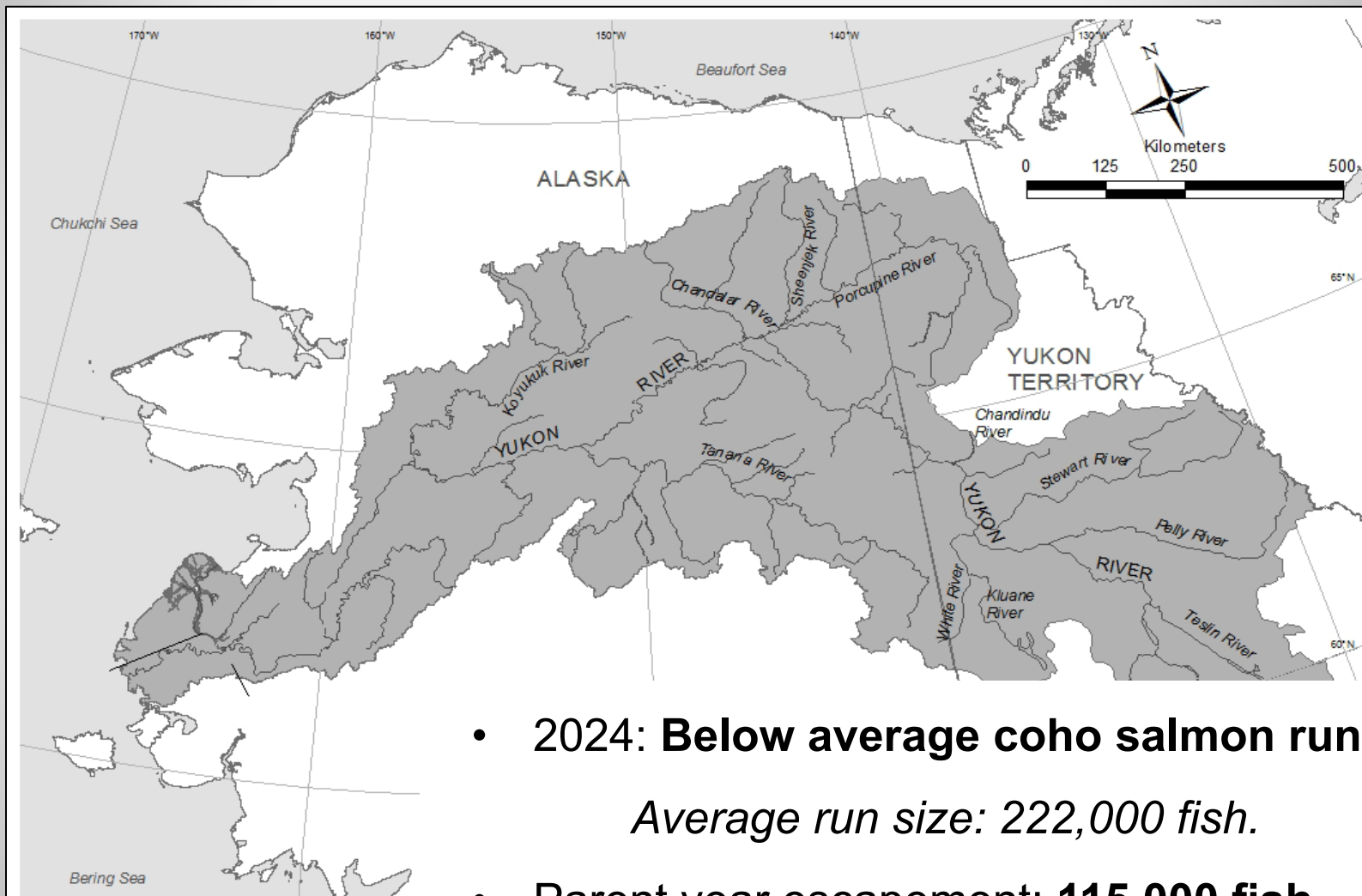
**Subsistence\*  
Personal Use\*  
Sport\*  
Commercial\***



**Closed** to meet  
escapement goals

\* Possible restrictions to meet  
escapement goals

# 2024 Coho Salmon Outlook



- 2024: **Below average coho salmon run.**  
*Average run size: 222,000 fish.*
- Parent year escapement: **115,000 fish.**  
*Average escapement: 155,000 fish.*



Photo by Christy Gleason

# 2024 Subsistence Fishing Opportunities

---

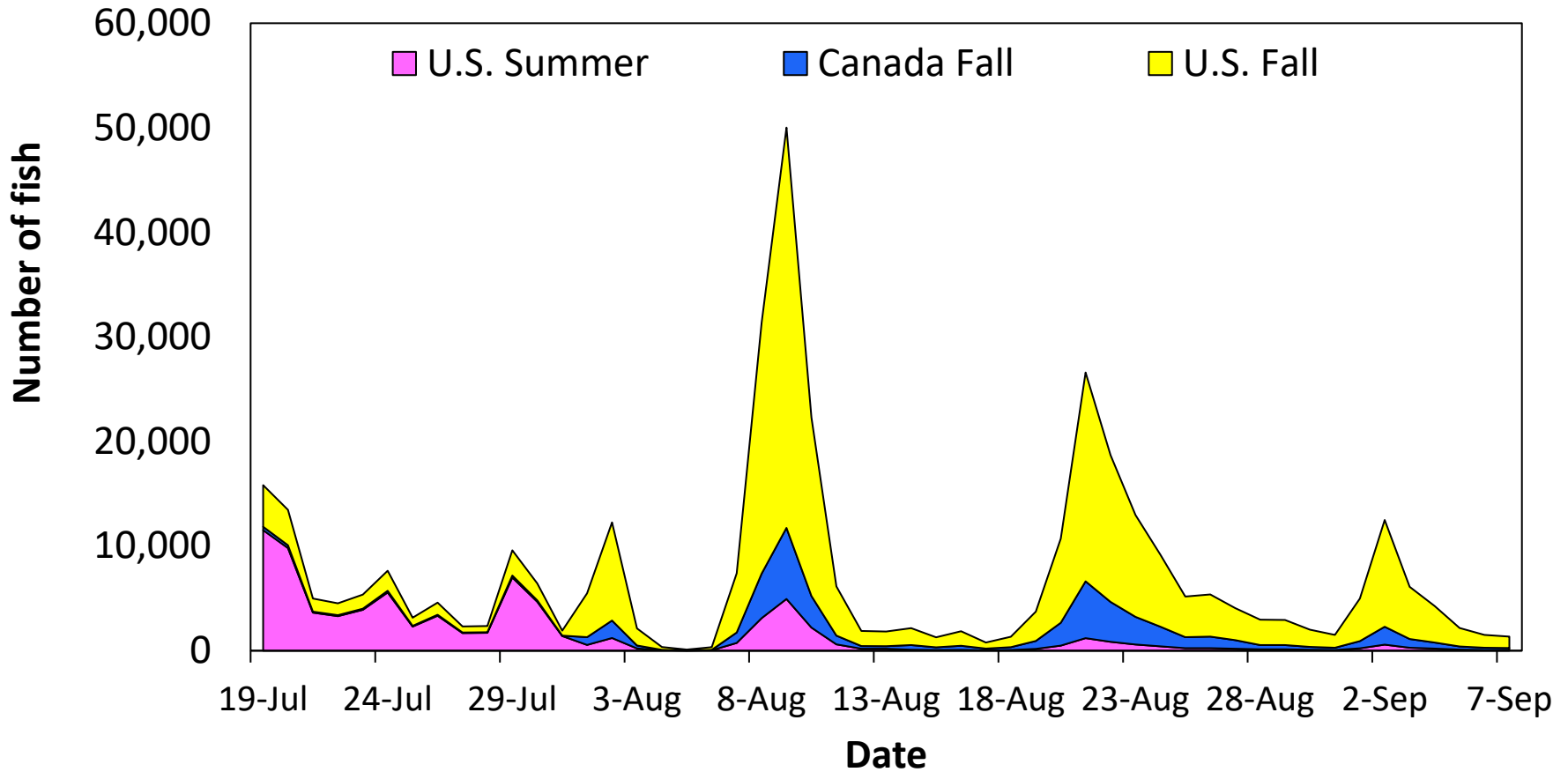
## If below escapement goals:

- Salmon fishing closures.
- Selective gear for nonsalmon and some salmon species.
  - Dip nets, hook and line, beach seines, and manned fish wheels.
  - If warranted, require release of a salmon species.
- 4-inch or smaller mesh set gillnets limited to 60 feet length.

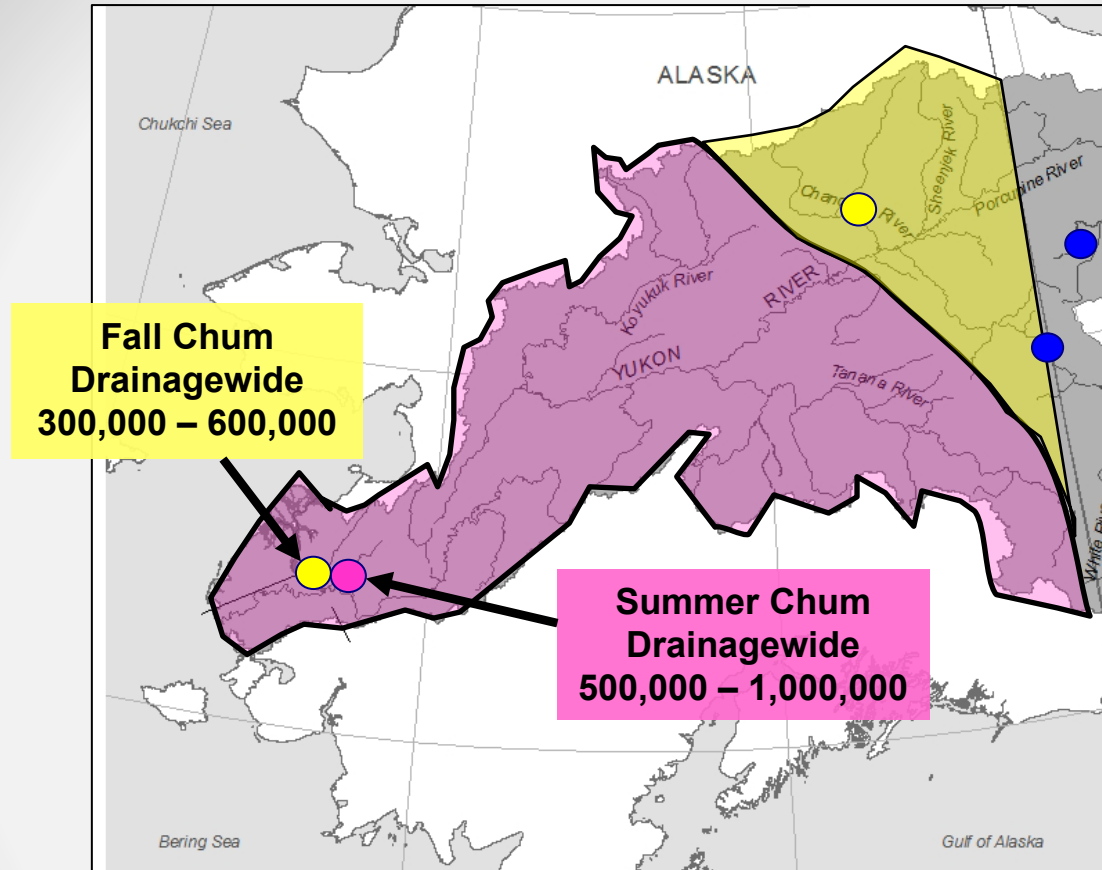


# Review of 2023 Chum Salmon Genetic Run Timing During the Fall Season

## Chum Salmon – Lower Yukon River Sonar



# Mid-July

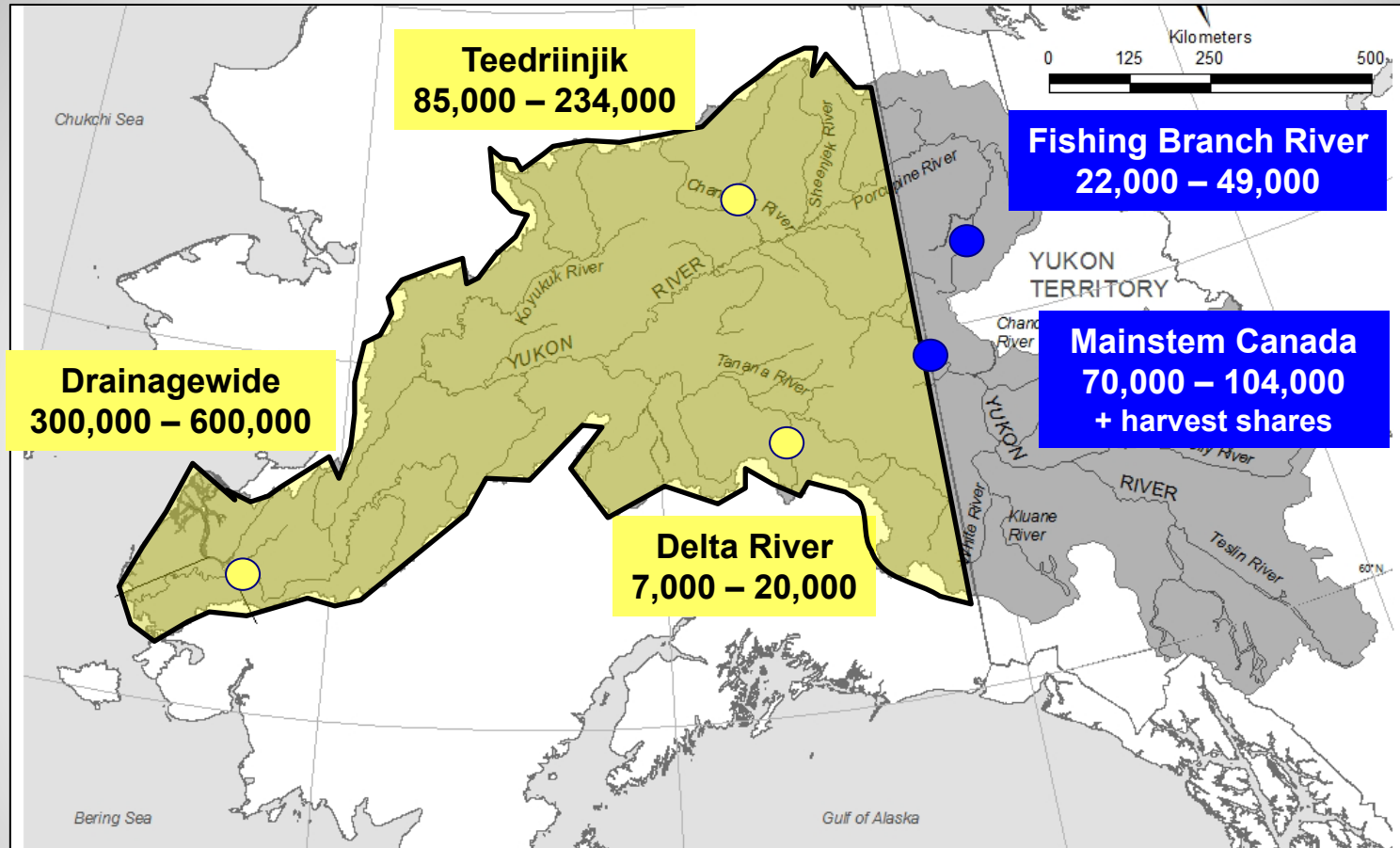


**If within U.S. summer and fall chum drainagewide escapement goals, but below Canadian fall chum salmon goals.**

- Closed to chum salmon fishing: Mainstem of Upper Yukon, Porcupine, and Teedriinjik.
  - Open to chum salmon fishing: U.S. tributaries and lakes.
- Gear and Time: Selective gear or salmon gear (6-inch gillnets & fish wheels).

*Time may be limited to meet escapement goals.*

# Late July-August

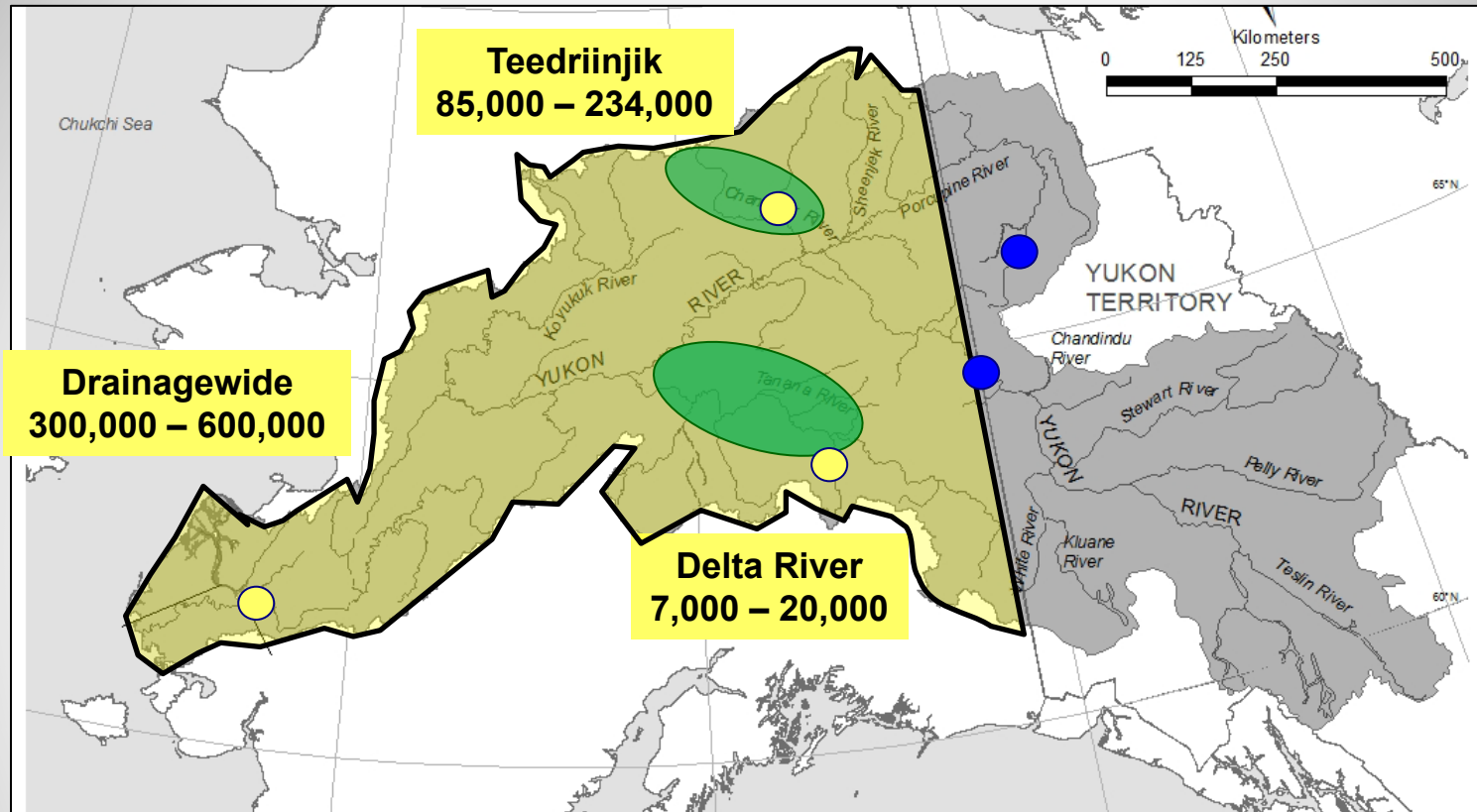


**If within U.S. fall chum drainagewide goal, but below Canadian fall chum salmon goals.**

- Closed to chum salmon fishing: Yukon mainstem and spawning tributaries.
- **Open to chum salmon fishing**: U.S. tributaries and lakes.
  - Gear and Time: Selective gear or salmon gear (6-inch gillnets & fish wheels).  
*Time may be limited to meet escapement goals.*



# Late Season



If within U.S. fall chum drainagewide and tributary goals, but below Canadian fall chum salmon goals.

- Closed to chum salmon fishing: Mainstem Yukon and Porcupine rivers.
- **Open to chum salmon fishing in** Teedriinjik and Tanana River drainages.
  - Gear and Time: Selective gear or salmon gear (6-inch gillnets & fish wheels).  
*Time may be limited to meet escapement goals.*
- Relax restrictions in the mainstem starting in Lower Yukon earlier than October 1.



# Thank you

for the continued support for Yukon salmon conservation

## ADF&G Contacts

christine.gleason@alaska.gov, Area Manager  
bonnie.borba@alaska.gov, Research Biologist  
andrew.padilla@alaska.gov, Assistant Research  
matthew.olson@alask.gov, Assistant Manager  
907-459-7274

## USFWS Contacts

holly\_carroll@fws.gov, Subsistence Manager  
keith\_herron@fws.gov, Assistant Manager  
shane\_ransbury@fws.gov, Research Biologist  
907-351-3029