

# Summary of the 2018 U.S. Yukon Area Fall Chum and Coho Salmon Season

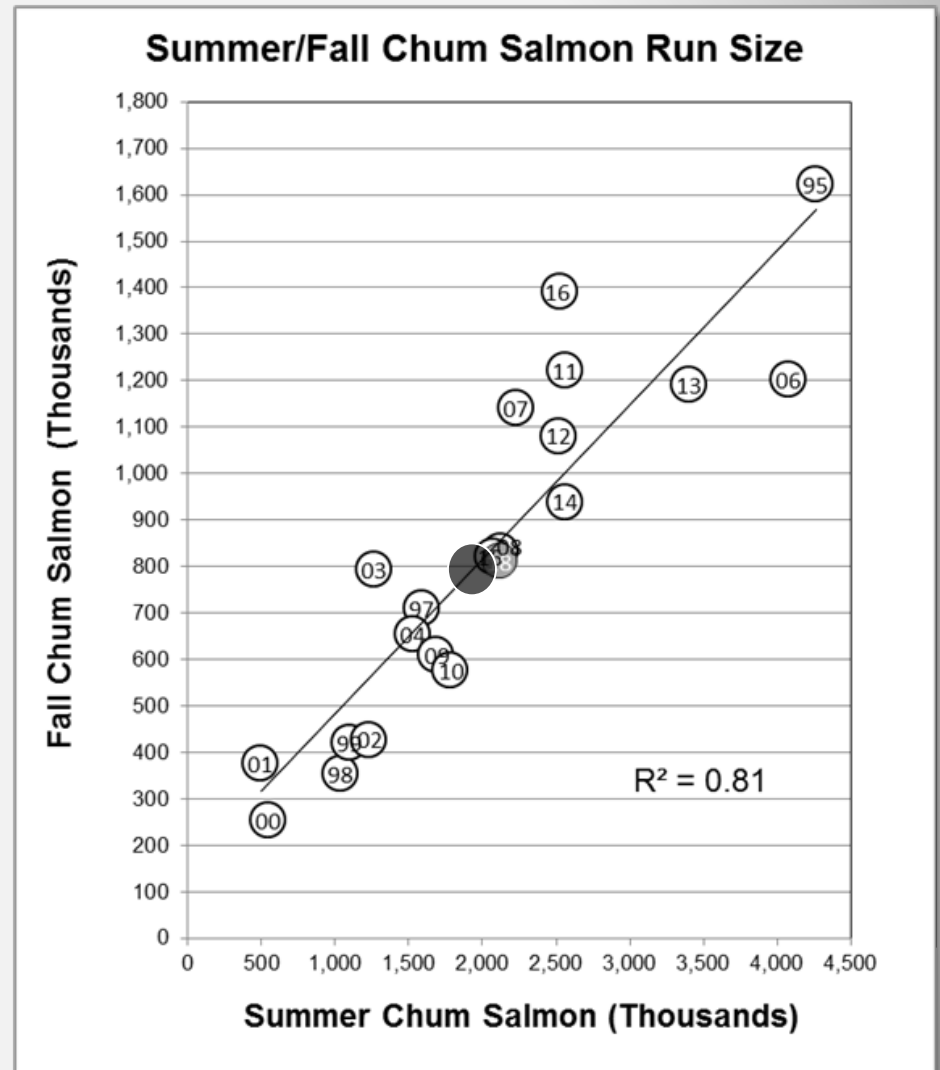
U.S./Canada  
Panel Meeting  
December 8-12, 2018  
Anchorage, AK

Presentation By: Jeff Estensen

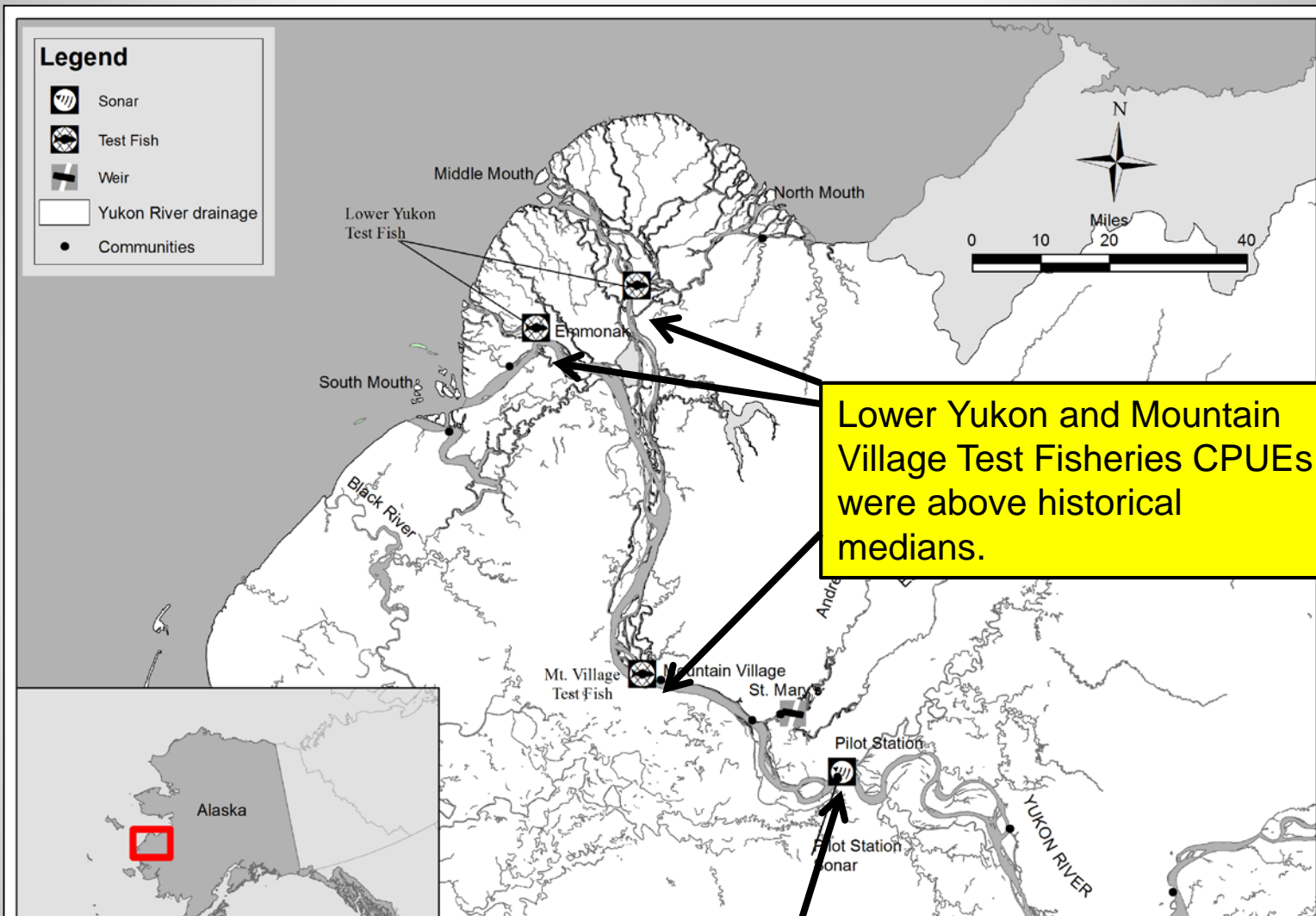


# Fall Chum Salmon Outlook

- Preseason
  - Forecast derived using Ricker modelling
  - 1.6 M–1.8 M fish
- Initial management
  - Preseason projection based on summer/fall chum salmon relationship
  - 700,000 – 900,000
- Inseason management
  - Assessment projects



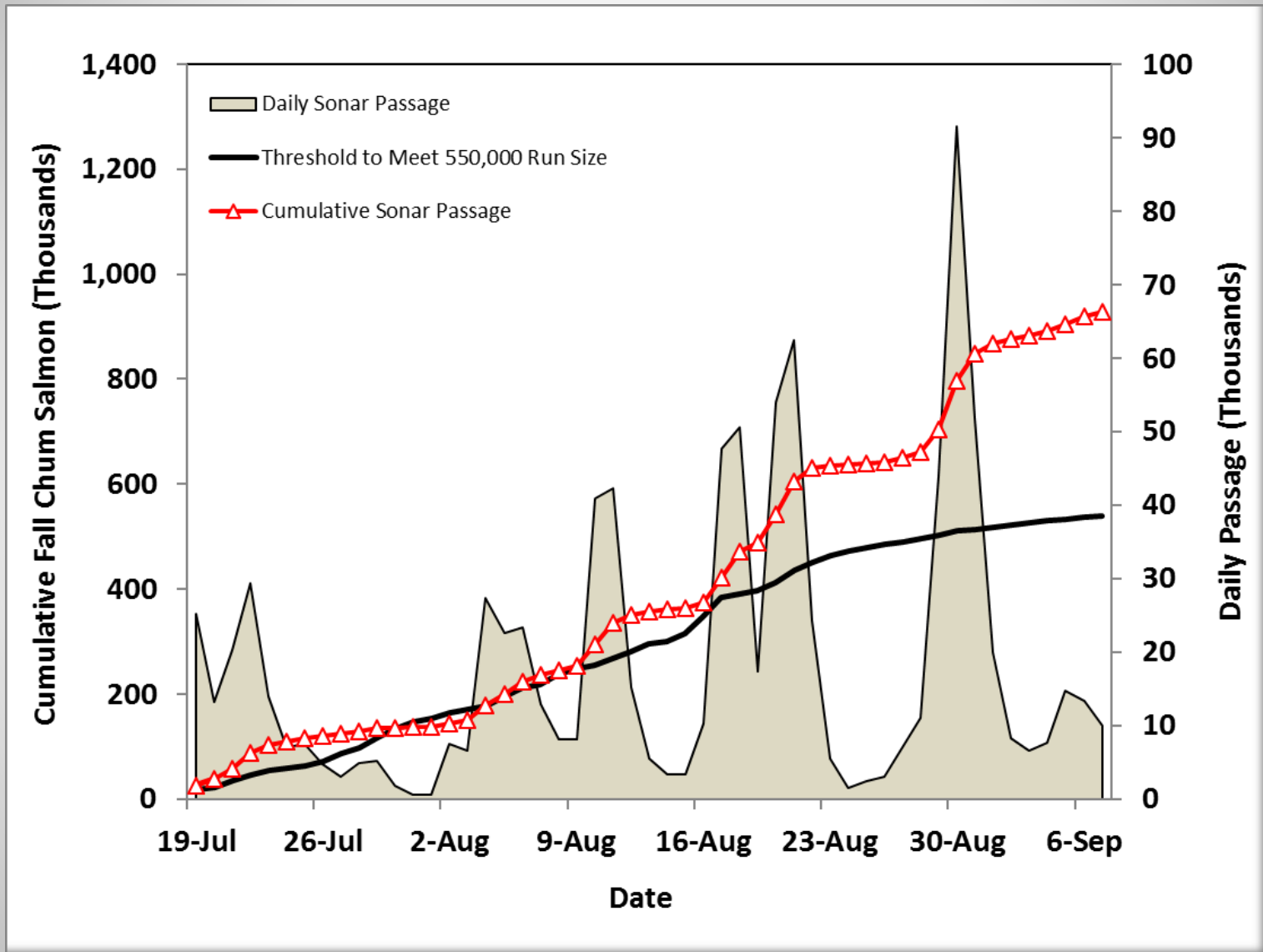
# Lower River Projects



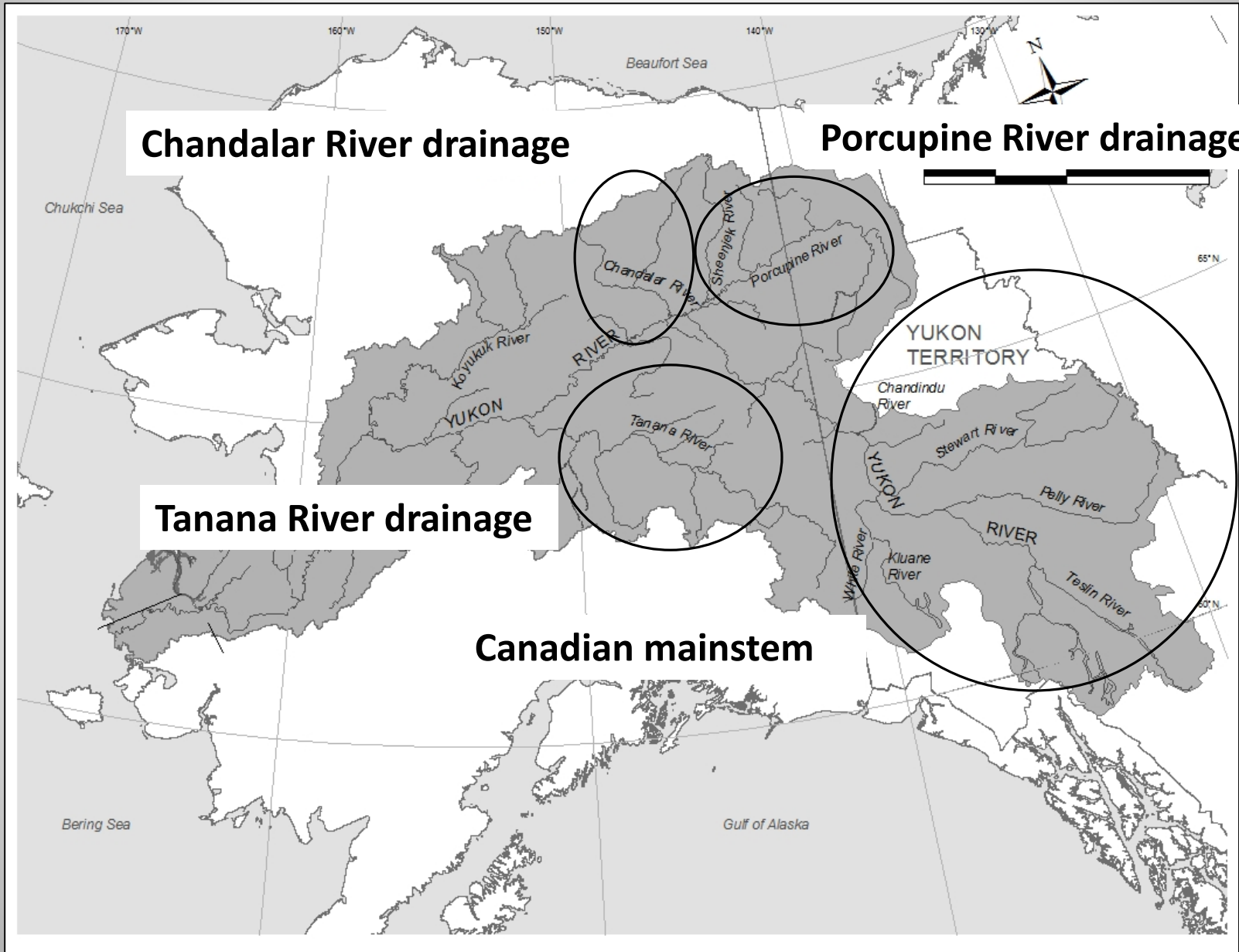
Lower Yukon and Mountain Village Test Fisheries CPUEs were above historical medians.

Mainstem Sonar near Pilot Station had a cumulative passage of 930,000 fall chum salmon which was above the historical median of 707,000 fish.

# Fall Chum Salmon Inseason Assessment

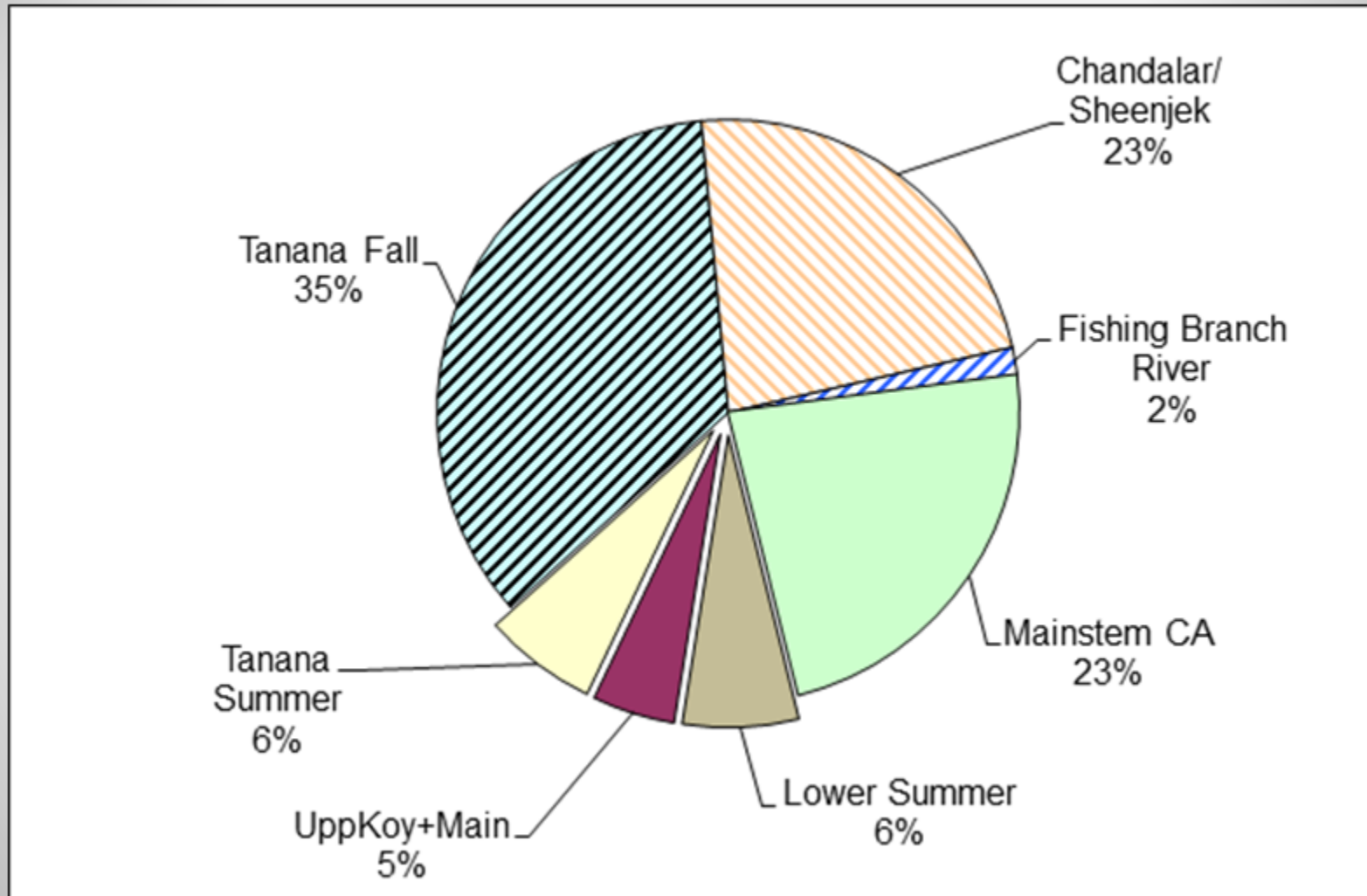


# Spawning Locations Fall Chum Salmon



# Fall Chum Salmon Genetic Composition

Chum salmon sampled at the mainstem sonar after July 18

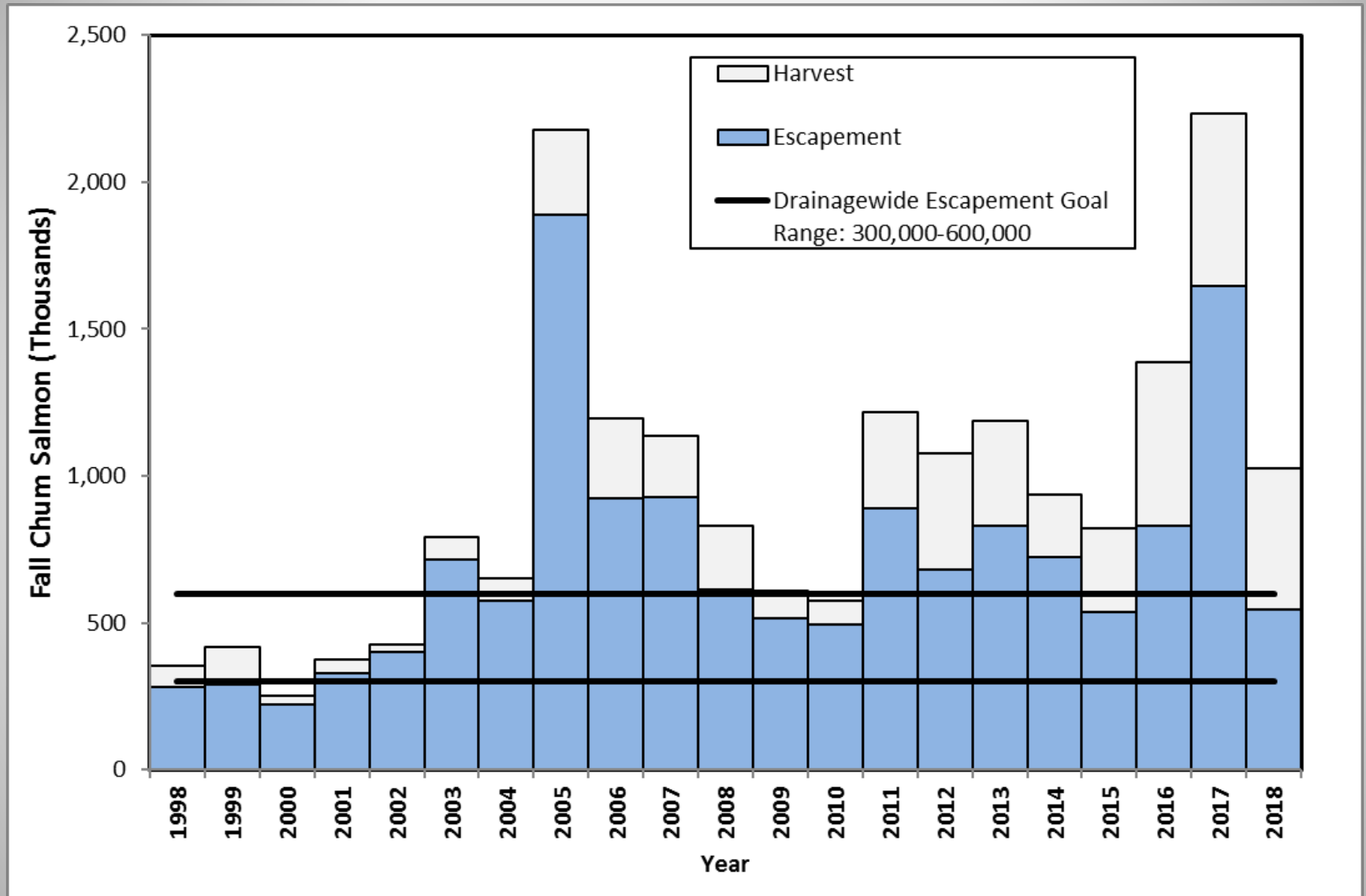


# Escapement Goals and Objectives

With the exception of the Fishing Branch River IMEG, all goals and objectives were met or exceeded for fall chum salmon

<u>Location:</u>	<u>2018:</u>	<u>Goal:</u>
Yukon Drainage	> 1 Million	300,000-600,000
Delta River	39,641	6,000-13,000
Chandalar River	161,000	74,000-152,000
Canadian Escapement	141,000	70,000-104,000
Fishing Branch Weir	9,902	22,000-49,000

# Fall Chum Salmon Stock Status



Current year information is preliminary



# 2018 Management and Harvests

A		B	C	D	E	F	G	H	I	J	K	L	M	N	O	Q	T	U	V	W
1	Table A	Current year daily and cumulative passage estimates attributed to fall chum salmon from the mainstem Yukon River near near Pilot Station (left section), run reconstruction is based on adding harvests downstream (right section), timing is based on the proportions from 1995, 1997 through 2008, and 2010 to 2015.																		
4	FALL CHUM SALMON																			
5		Reset FC										Run Reconstruction Version								
6		Projections										2016								
7		Straight UP Pilot										Based on Historical Run Timing								
8	Date	Daily	Cumulative	Earliest	Early	Median	Late	Daily	Cumulative	Earliest	Early	Median	Late	Date	Area	Mileage	Location			
52	30-Aug	2,834	992,337	993,498	997,509	1,013,081	1,057,829	5,316	1,374,903	1,379,108	1,383,544	1,408,459	1,479,949	30-Aug Tue	4A	483	Nulato River			
53	31-Aug	2,423	994,760	995,107	996,009	1,001,573	1,054,749	4,481	1,379,384	1,380,640	1,385,216	1,403,055	1,472,882	31-Aug Wed	4A	484	Nulato			
54	1-Sep	8,148	1,002,908	1,009,908	1,009,908	1,009,908	1,053,680	9,094	1,388,478	1,388,681	1,396,377	1,404,936	1,470,040	1-Sep Thu	4A	502	Koyukuk			
55	2-Sep	8,134	1,009,043	1,009,043	1,009,043	1,009,043	1,047,196	7,407	1,395,886	1,396,046	1,397,750	1,406,078	1,465,485	2-Sep Fri	4A	508	Koyukuk River			
56	3-Sep	10,775	1,019,818	1,019,818	1,019,818	1,019,818	1,042,769	11,647	1,407,533	1,407,651	1,409,217	1,413,382	1,457,554	3-Sep Sat	Koy	564	Gisasa River			
57	4-Sep	8,180	1,025,998	1,025,998	1,025,998	1,025,998	1,040,233	7,563	1,415,096	1,415,171	1,415,426	1,419,238	1,446,618	4-Sep Sun	Koy	711	Huska			
58	5-Sep	5,006	1,031,064	1,031,064	1,031,064	1,031,064	1,036,008	8,437	1,423,533	1,423,608	1,423,826	1,426,018	1,448,397	5-Sep Mon	Koy	755	Daki R			
59	6-Sep	20,942	1,052,006	1,052,006	1,052,006	1,052,006	1,056,163	22,185	1,445,718	1,445,793	1,445,979	1,447,257	1,457,040	6-Sep Tue	Koy	780	Hogauz			
60	7-Sep	13,561	1,065,567	1,065,567	1,065,567	1,065,567	1,067,005	16,275	1,461,993	1,462,074	1,462,211	1,462,668	1,467,206	7-Sep Wed	Koy	881	Hughes			
61	8-Sep	11,022	1,076,589	1,076,589	1,076,589	1,076,589	1,076,589	14,814	1,476,807	1,476,807	1,476,872	1,477,158	1,480,502	8-Sep Thu	Koy	935	Kanuti			
62	9-Sep	5,805	1,082,474	1,082,474	1,082,474	1,082,474	1,082,474	11,409	1,488,216	1,488,216	1,488,256	1,488,455	1,490,990	9-Sep Fri	Koy	950	Atlakak			
63	10-Sep	8,345	1,090,819	1,090,819	1,090,819	1,090,819	1,090,819	11,480	1,499,696	1,499,696	1,499,710	1,499,851	1,501,464	10-Sep Sat	Koy	986	South F			
64	11-Sep	-	-	-	-	-	-	#N/A	#N/A	#N/A	#N/A	#N/A	#N/A	11-Sep Sun	Koy	1117	John R			
65	12-Sep	-	-	-	-	-	-	#N/A	#N/A	#N/A	#N/A	#N/A	#N/A	12-Sep Mon	Koy	1121	Bottles			
66	13-Sep	-	-	-	-	-	-	#N/A	#N/A	#N/A	#N/A	#N/A	#N/A	13-Sep Tue	Koy	1141	Middle			
67	14-Sep	-	-	-	-	-	-	#N/A	#N/A	#N/A	#N/A	#N/A	#N/A	14-Sep Wed	Koy	1174	Cok F			
68															Koy	1186	Wisami			
69															4BC	514	Bishop			
70															4BC	519	Prosper			
71															4BC	530	Galena			
72															4BC	555	Whiske			
73															4BC	562	Yuki R			
74															4BC	581	Yukon			
75															4BC	583	Melozh			
76															4BC	605	Hornier			
77															4BC	608	Kokrine			
78															4BC	612	Nowlne			
79															4BC	647	Birches			
80															4BC	664	Kalland			
81															4BC	681	Toztina			
82															ABC	695	Tanana			
83															ABC	731	Rampac			
84															ABC	763	Rampac			
85															ABC	789	Husa			



# Subsistence Fisheries Management

- Full regulatory subsistence schedules and use of up to 7.5” mesh gillnets upon transitioning to fall management
- Liberalized fishing to 7 days per week based on inseason run assessment



# Porcupine River Fall Chum Salmon

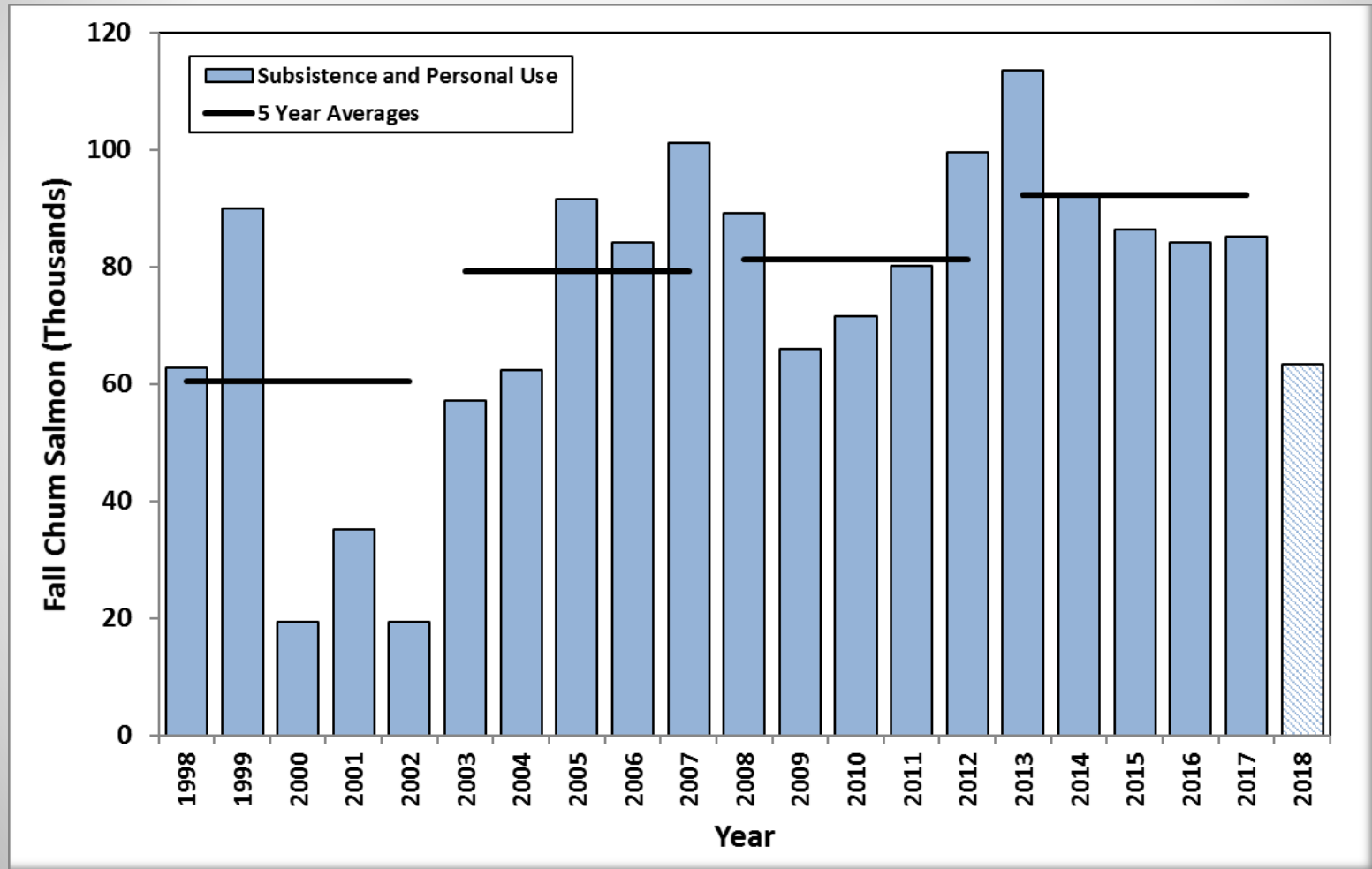


# Porcupine River Fall Chum Salmon

- Entered fall season with a drainagewide projection of 700,000 to 900,000 fall chum salmon
  - Subsistence fishing schedule in effect September 6
- Late fall chum salmon pulse end of August increased inseason run assessment > 1 M fish
  - Remained on subsistence fishing schedule and assessed Porcupine River run
- Porcupine River assessment continued to indicate IMEG would not be achieved at Fishing Branch weir
  - Subsistence fishing in US portion of mainstem Porcupine River closed October 3

# Fall Chum Salmon Subsistence Harvest

2018 estimate ~63,000 fall chum salmon



Current year information is preliminary

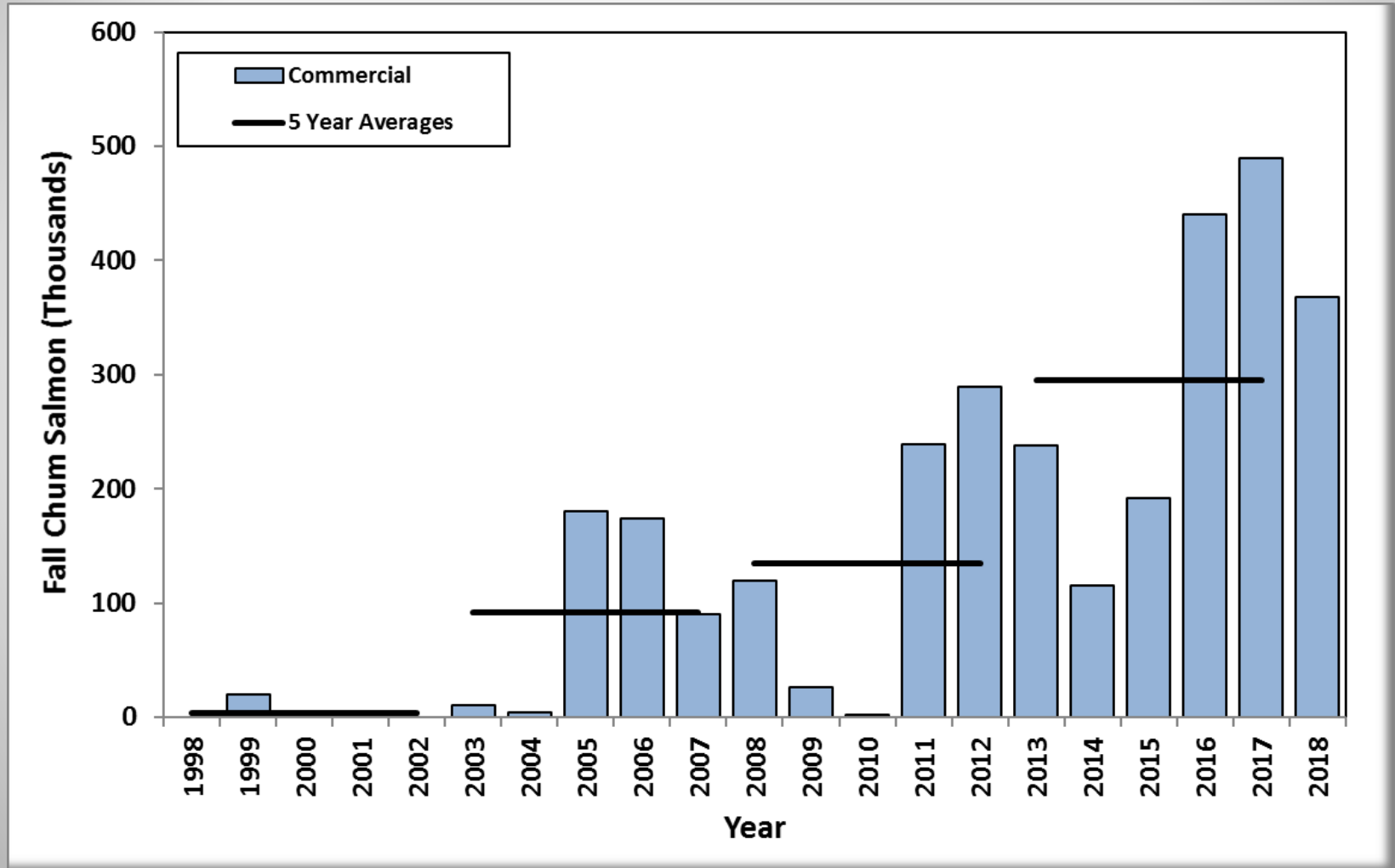
# Commercial Fisheries Management

- Commercial surplus available
- Two period/week schedule in Lower River upon switching to fall management
- Commercial openings in Upper River in Subdistricts 5B-C and District 6



# Fall Chum Salmon Commercial Harvest

2018 preliminary harvest 388,000 fish



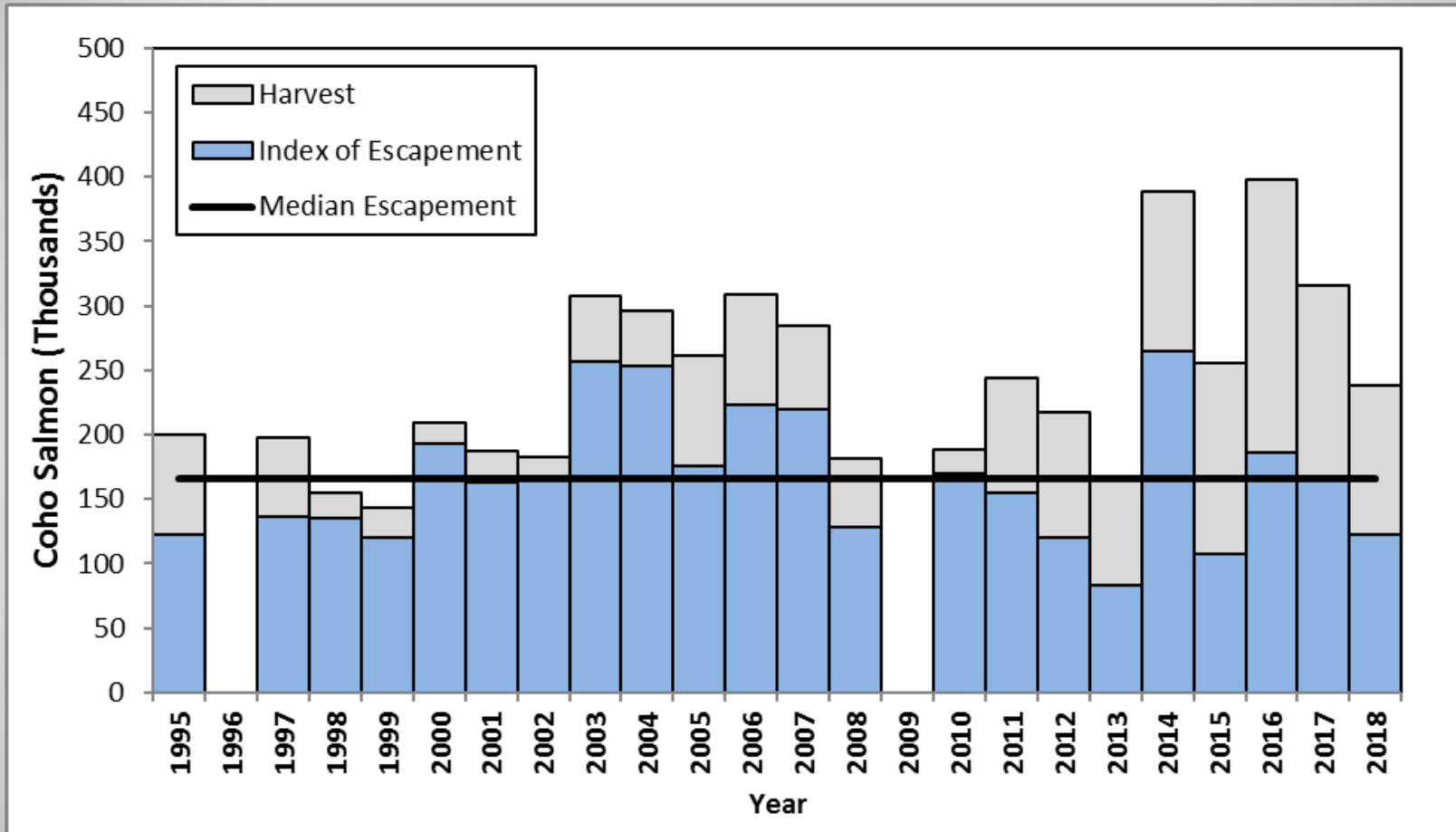
# Coho Salmon Management

- Outlook for average run size (~198,000)
- Estimated 2018 run size was 315,700 fish
- Above average run size
- Incidentally harvested in fall chum salmon directed commercial fishery
- Under coho salmon management plan, the department had a directed commercial fishery in early September in Lower Yukon Area





# Coho Salmon Run Size Index



Current year information is preliminary

# Questions?



Photo by Mary Ellen Jarvis



Photo by Mary Ellen Jarvis

## ADF&G Fall Season Team Contacts

jeff.estensen@alaska.gov  
christine.gleason@alaska.gov  
bonnie.borba@alaska.gov

907-459-7274

Area Manager  
Assistant Manager  
Research Biologist